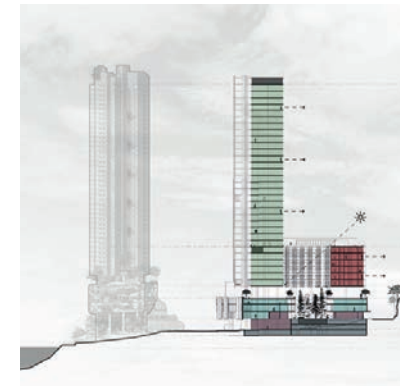
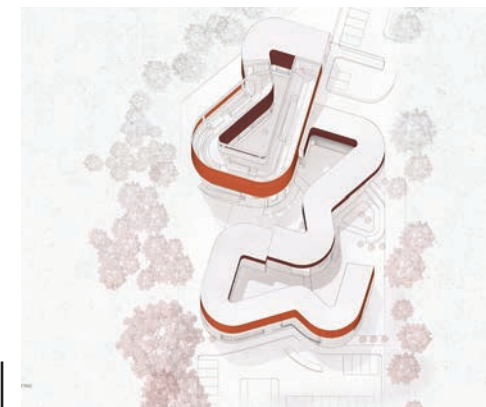


ARCH1201 / B.ARCH
PLAN & SECTION



ARCH7001 / M.ARCH
ARCHITECTURE & COMMERCE



ARCH2200 / B.ARCH
HISTORY & MEMORY



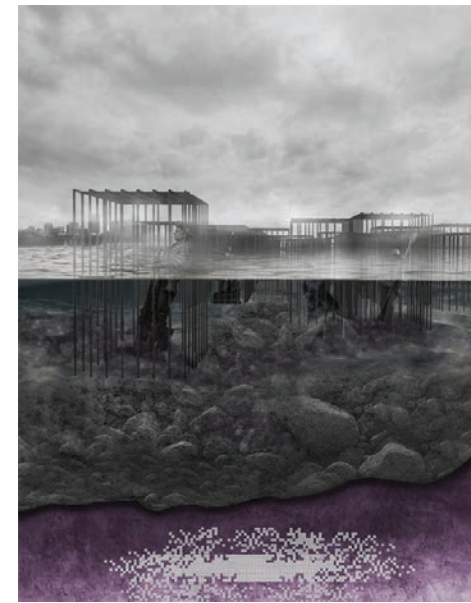
ARCH7002 / M.ARCH
INSTITUTIONS & IDEOLOGY



ARCH7004 / M.ARCH
DWELLING & DENSITY



ARCH7003 / M.ARCH
ADAPTIVE CAPACITIES



ARCH7006 / M.ARCH
UTOPIAN URBANISM



ARCH7008 / M.ARCH
MATERIAL EXPERIMENTS



ARCH7015 / M.ARCH
GENERATIVE STRUCTURES



ARCH7016 / M.ARCH
RESPONSIVE ENVIRONMENTS



ARCH3200 / B.ARCH
TECTONICS & PRECISION

e-MARCH

END OF YEAR ARCHITECTURE EXHIBITION

Thursday 29 November 2018



Welcome to eMbARCH 2018.

This year's School of Architecture design studios offer an insight into our approach to design, ideas, practice and technology. The work of our students and graduates exemplifies the significant role architects and architecture play in shaping the future - across a wide variety of contexts and cultures. The design studio, and its focus on inquiry based learning, prepares our students to participate in the creation of a resilient, equitable and beautiful built environment.

Our guests for this event - students, staff, alumni, practitioners and sponsors - are a community of practice and we warmly welcome you. An engaged and passionate network of friends and supporters is a powerful force for the advancement of the School of Architecture and we thank you for your partnership in our progress and outreach. This celebratory exhibition demonstrates the commitment of our students and academics to the discipline and practice of architecture and the depth of our local and international engagement.

Prof Cameron Bruhn
Dean and Head of School
Architecture



CREATE CHANGE

As graduates of Architecture, understand there are exciting opportunities both within and outside of traditional practice.

With your education you have the knowledge and ability to understand and contribute to the greater endeavour of our built environments.

Work collaboratively across disciplines and continue to engage with the changing needs of your community and city. The opportunities are endless.

Congratulations on your graduation. I wish you all the very best with your bright careers and look forward to crossing paths with you in the future.

Christina Na-Heon Cho
Director, Cox Architecture
Adjunct Associate Professor and
Member of the Industry Advisory Board



e_M
b_
ARCH1201

PLAN & SECTION

Antony Moulis with Peyman Akhgar
Sarah Betts
Michelle Bailey
Aparna Datey
Michael Dickson
Alyce Giebel
Douglas Neale
Scott Rowland
Andrew Uttley

We explored the significance of the plan and section as key tools for architectural design through an iterative process of physical and digital modelling, diagramming and orthographic drawing. The capacity of sectional and planar strategies to determine formal and spatial solutions was tested along with programmatic and experiential aims.

We undertook three projects:

SECTIONAL SLICE - involved making sunken-relief plan and section models and volumetric studies of exemplar architecture to allow students to become familiar with spatial and structural strategies, revealing order, pattern and hierarchy.

SHOPFRONT - required the design of a new spatial node combining entry to two distinct but related functions off an existing street tenancy that had been modelled in CAD.

Students developed spatial approaches based on visual studies of selected artworks from the UQ Art Museum.

SHOP/HOUSE - saw students density activity around Boundary Street, West End, adding new functional uses over existing ones. In forming their designs, students activated the street experience and created a dynamic relationship between program and space.

e_M
b_
ARCH2200

HISTORY & MEMORY

Sandra Kaji-O'Grady with Craig Atkins
Melody Chen
Jason Haigh
Morgan Liu
Paige Lee
Patrick Ozmin

Biological evolution was used as a model of transformation from one form to another over time - a kind of 'natural history' - against which the history of architecture was compared.

Ideas about inheritance, ancestry, pedigree, memory, progress, intuition, habit, refinement, monstrosity, hybridization, etc can be found in both biology and architecture. In selective breeding and cross-breeding, we likely come closest to the way in which students worked with precedents.

Mechanisms of evolution were employed to create novel forms using historic precedents - as if buildings were parent organisms from which to breed architectural progeny. The architectural precedents were residential, and we were asked to 'adopt' and interpret the idioms of significant architects at two non-residential scales.

e_M
b_
ARCH7001

ARCHITECTURE & COMMERCE

In collaboration with BVN

Brian Donovan with Kirstie Irwin
Leonie Matthews
Hayley Sainsbury

Conducted from BVN's Creek Street studio, this studio provoked us to develop contemporary thinking to provide solutions that heighten qualities and experiences for Australia's growing aged care population, and to promote active ageing 'in place'.

It is widely understood that the next generation of older people - the baby boomers (born 1946-1964) - have higher expectations of accommodation in meeting their future housing needs. In response, developers and for profit/not for profit providers throughout Australia, much like the rest of the developed world, are working quickly to refine and release new offerings to the market and find an attractive business case.

With the assistance of guest lecturers to cover the broad range of project influence, BVN showcased the multiple forces of finance, planning, construction and property economics that shape projects in addition to client briefs and architectural skill.

Proposals were conceived, tested and tailored as an experiential response to the commercial determinants as they apply to city and urban planning, public realm, way-finding, space planning and aged care occupation.

We designed a medium scale 3-storey multigenerational residential building with a commercial component that engages with the street. We were given a specific family group and were to consider the use of the house over a 15-year period. While resolving the urban role of the building through mass modelling and sectional analysis, we shaped and controlled internal and external spaces considering, from the very inception of the design process, the selection of materials and related building technologies.

We reflected on the urban engagement of the project through the use of sectional drawings. We were given a specific commercial activity for our residential building, which contributed to the definition of special solutions and material and elements choices.

e_M
b_
ARCH7002

INSTITUTIONS & IDEOLOGY

Kelly Greenop with Amelia Hine

2018 marks 30 years since the Barunga Declaration by then Prime Minister Bob Hawke. This statement declared that Australia would have a Treaty with our First Nations people, establishing how the Nation would move forward and compensate for the dispossession Indigenous people suffered through colonisation. This has never been achieved, though some politicians and political parties are again advocating for this change, echoing constant requests for a Treaty from Indigenous communities in Australia, since colonisation began.

The scenario - Following a major political shift in Australia, the Treaty Now party takes over all Federal and State Governments. The governance of the nation is to change and move towards de-colonisation, also known as reconciliation, across political, social and environmental levels. Decolonisation, defined as undoing the damaging processes of colonisation, rather than changing the demography of the country, will not mean removal of non-Indigenous people or descendants of early colonists.

We chose to engage with one of the three new ministries under the de-colonisation program and work on an appropriate building to headquarter the Ministry in Canberra within the Parliamentary triangle.

This involved designing an institution for meeting, discussing, engaging Indigenous and non-Indigenous communities, visiting dignitaries and the public in novel ways that reflect the changed government ideology. It also required learning how different cultures meet, discuss and make decisions, and how to embody this in a built form.

e_M
b_
ARCH7003

ADAPTIVE CAPACITIES

Ashley Paine with Paul Matthew

We turned our focus to the UQ School of Architecture building, and examined possibilities for its adaptive and expansion to address the needs of the school and school community for the coming decades.

For this studio, the title and theme, "Adaptive Capacities" was examined on multiple fronts, combining practical as well as creative studies in response to a series of architectural legacies. One such legacy is the Zeilman Cowan building itself. The proposed re-use of the existing structure is not only a cost effective approach to the challenges of housing the School of Architecture, but also established a clear agenda for the school based in sustainable principles.

While acknowledging the limitations of the extant building, we were encouraged to adapt the inherited structure in ways that capitalise upon its latent capacities and unique architectural, spatial and material qualities. At the same time, the studio encouraged new creative strategies, interventions and additions that will reinvent the building, and ensured its continued use and relevance for decades to come.

e_M
b_
ARCH7004

DWELLING & DENSITY

Hamilton Wilson with Doug Neale

We pursued diverse solutions to the challenge of accommodating rapidly growing, urban populations locally and globally.

Issues such as density and amenity, privacy and community, climate and cultural appropriateness, affordability, disability, ageing and changing household demographics were considered in the design of innovative housing.

Strategies formed questioned the developer driven determinism of current housing projects. In so doing we were encouraged to look beyond the conventional modes of urban analysis and develop an understanding of landscape, urban morphology and typology, for design propositions that explore the connection between the architectural-ness of building design and its fit with, and production of, the city.

e_M
b_
ARCH7006

UTOPIAN URBANISM

Nicole Sully with Joshua Spillane

We were asked to consider ways in which cities deal with their own history. In particular, we considered how cities recognize, address and progress from problematic pasts, and specifically, the artifacts and urban legacies that represent these troubling moments.

Through research, analysis and design work - we explored these questions in the context of recent debates surrounding the legacy of the Civil War in the United States of America, and through the particular case study of Richmond, Virginia.

During the Civil War, Richmond served as capital of the Confederate states. As such, it was home to many facilities associated with the war effort and was the site of a number of important battles. Amongst the vexed legacy of these events is Monument Avenue, an 8.7km stretch of road which forms a key urban and ceremonial axis in the city.

We participated in a design competition seeking ideas for how to deal with Monument Avenue, its confederate monuments, and the city's problematic urban and social history. Thoughtful, unconventional and imaginative explorations of these sensitive issues were particularly encouraged.

e_M
b_
ARCH7008

MATERIAL EXPERIMENTS

Fred Fialho Teixeira with Shuweh Zhang

Using 3d printing fusion deposition modelling (fdm) as the correspondent manufacturing block, we produced structures based on the biomimicry phenomena of deposition growth. Through an iterative design process of applied tectonic performance, we explored a direct relation between material and form, where emergent patterns provide an informed knowledge between structural properties and spatial logic.

By focusing open acts of experimentation, we examined and deployed production processes and innovative tectonic propositions for emergent urban structures.

e_M
b_
ARCH7015

GENERATIVE STRUCTURES

Kim Baber with Sam Butler

In the 1920's, German Architect and Engineer Fritz Zeilinger developed a novel timber structure that used small interlocking components that could be arrayed quickly and easily into a large spanning roof vault.

These rooves were comparatively cheap because they were built out of lightweight lengths of timber, and constructed with minimal scaffolding. Of particular ingenuity, the diagonal geometry of the vault allowed each component to be supported by its previously assembled neighbouring parts, thus allowing the structure to literally 'grow' from the ground up.

Also known as Lamella vaults, these types of structures are part of a family of 'reciprocal frames', in which each element is assembled with an interdependent relationship to each of the other elements in the system, making them materially efficient, self supporting and (in certain cases) transportable - historically, reciprocal structures have been used by nomadic cultures.

We were asked to interrogate the way in which the design of the cellular elements, needn't be repetitive, but instead generative, taking precedent from examples that are non linear and adaptive to specificities of context and programme.

e_M
b_
ARCH7016

RESPONSIVE ENVIRONMENTS

Paola Leardini with Kristina Boychenko
Maryam Shafiei
Tom Varela

Flexible, interactive, responsive, sensitive, adaptive: a new set of adjectives are being used to describe architectures that are designed to 'sensorially' connect to their inhabitants, the environment and objects - either through human or digital intervention.

We investigated modes of communication between architecture and environment in real time, providing methods, strategies and practical tools for creating responsive architectural objects with unique qualities by means of environmental data mining and parametric design.

Our challenge was to design one of a set of Water Responsive Architecture Pods (WRAP) that punctuate a new water sensitive linear park across the suburb. This required thorough investigation of local social and environmental variables to set individual adaptive architecture frameworks by answering the following questions: What is the architecture reacting to? How are these reactions achieved? What is adaptable? What are the effects of adaptations on individuals, the community and the broader environmental?

PLATINUM PARTNER



EXHIBITION PARTNER



GOLD PARTNERS



SILVER PARTNERS



ARC FUTURE TIMBER HUB PARTNERS

