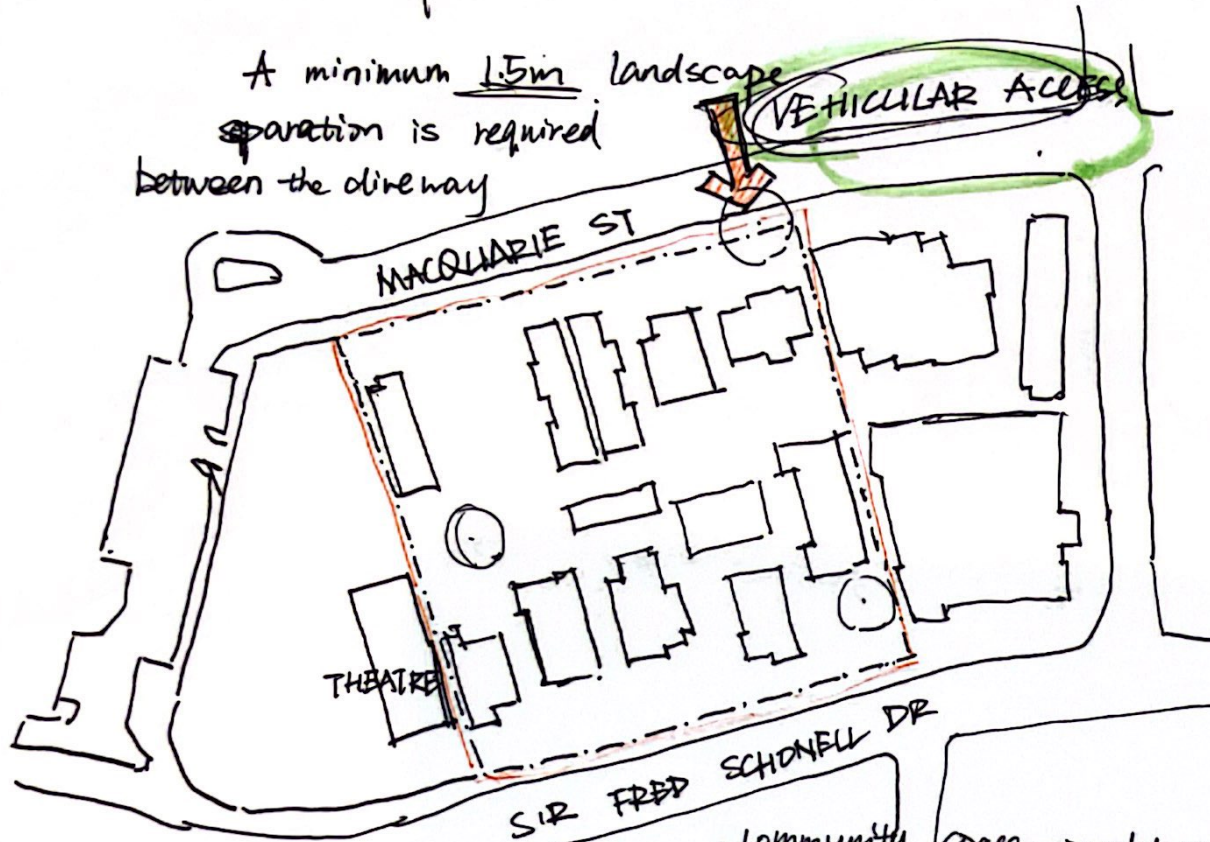


PARK

A minimum 1.5m landscape separation is required between the driveway



• No swimming pool

Above 7400m²

- Basement protection (accordance BBC)
 - perimeter berm
 - stormwater pipe backflow prevention
 - pump system.

- public access required the retail & hospitality.

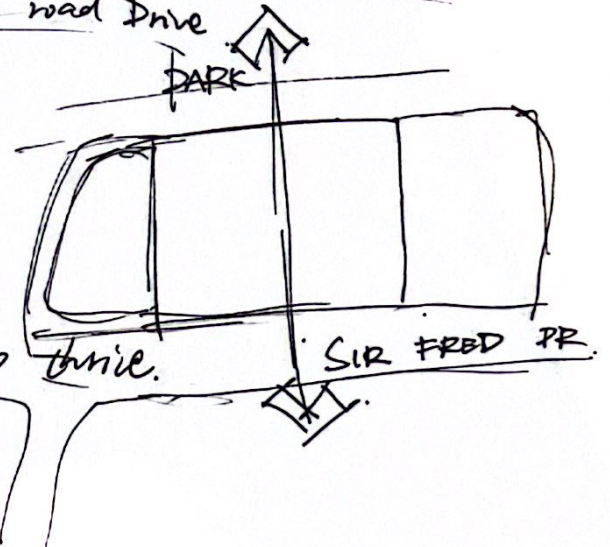
- Deliver public access across the site allowing through passage from Park to Sir road Drive

- Community space ⇒ only residents.

- enhancing the commercial viability of small businesses.

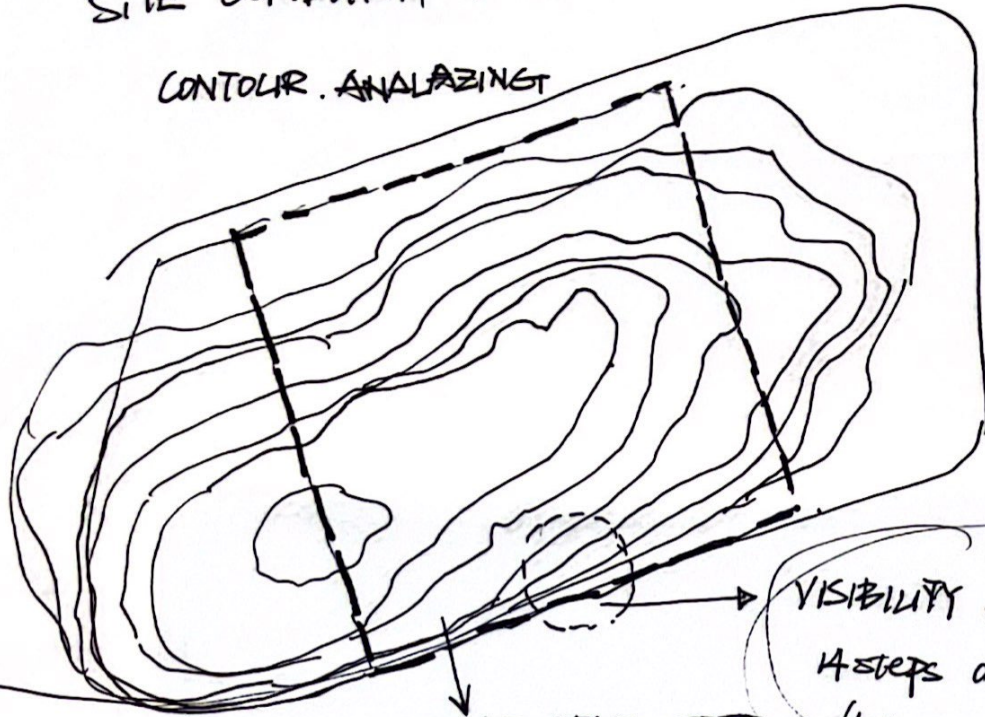
Goal 1: Growing the supply of affordable housing.

Goal 2: Supporting our communities & residents to thrive.



SITE CONDITION

CONTOUR ANALYZING



SLOPE VERY STEEP.

VISIBILITY ANALYSIS

4 steps are needed to build flat ground level.

• site and case study are surrounded by open parks.

• The overall shape of the building can be planned according to the trend of the terrain.

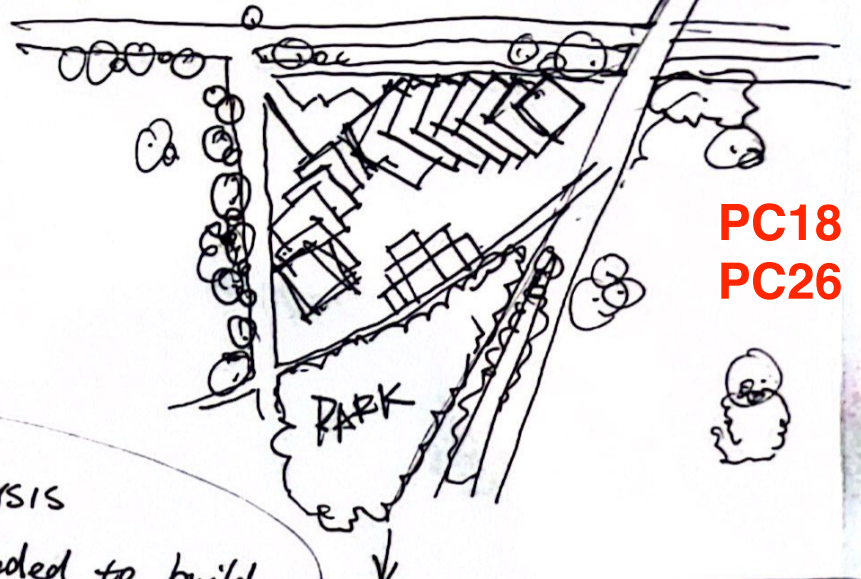
88 residential units

↓
one to five-bedroom homes.

resulting shape of building prioritizes view of the Aegean Sea on one side.

CASE STUDY

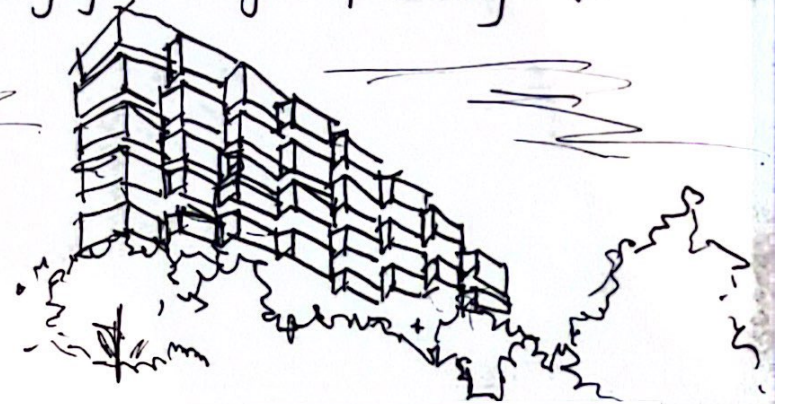
Big Unreil's Design for New Residential Development in Ellinikon Europe's largest Urban Regeneration project.



PC18
PC26

placed in a central location in Athens.

The project curved concave facade is obtained by varying the height of building's five cores.





PC26
PC30



Why does the client want to retain this theater? How can retaining this building be connected with the First Nation culture? Is it necessary to add cultural element to the design elements?

Preserving existing Australian native tree species can be an entry point for preserving to First Nation Cultural.

COXYMBIA SPECIES can be retained.
is an accepted name at APC (Australian Plant Census).

Jacaranda mimosifolia.

IN CHINA, VARIOUS PERIODS OF ITS HISTORY, INCLUDING THE OPIUM WARS & THE INVASION BY JAPAN DURING WAR II, WERE MARKED BY CONFLICTS AND SUFFERING.



IMPACT OF COLONIZATION

THE COLONIZATION BY THE BRITISH LED TO VIOLENCE, DISPOSSESSION & MISTREATMENT OF THE INDIGENOUS POPULATION. INCLUDED MASSACRES.



PC18
PC29

MULTICULTURALISM!

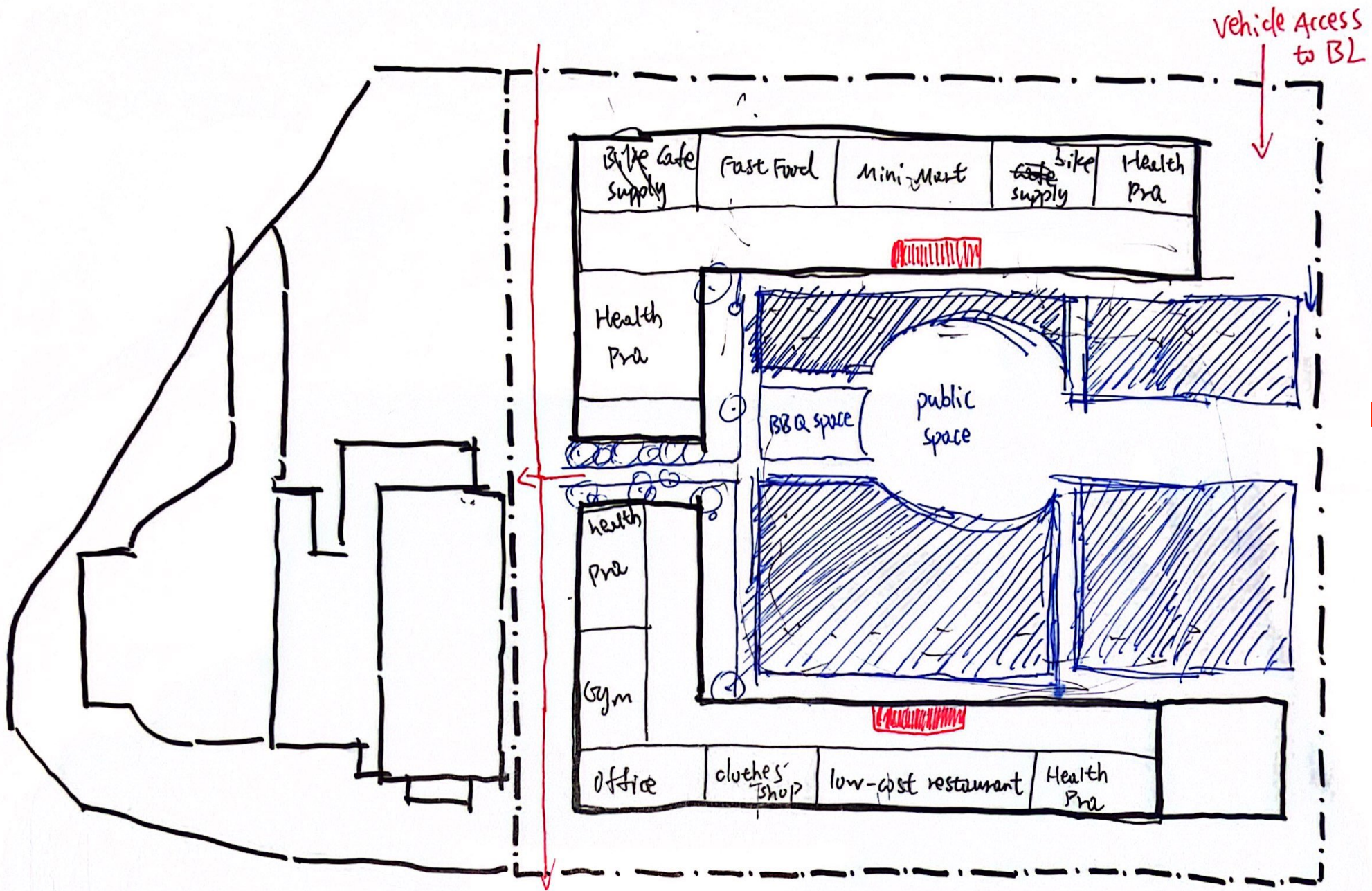
56 RECOGNIZED ETHNIC GROUPS.

KNOWN FOR ITS MULTICULTURAL SOCIETY WITH A DIVERSE POPULATION. INCLUDES PEOPLE FROM VARIOUS ETHNIC BACKGROUNDS & CULTURES.

SPIRITUALITY & BELIEF SYSTEMS. INFLUENCED BY CONFUCIANISM. DAOISM. & BUDDHISM.

AUSTRALIA'S INDIGENOUS CULTURES HAVE THEIR OWN SPIRITUALITY BELIEFS TIED TO THE LAND & DREAMTIME STORIES.

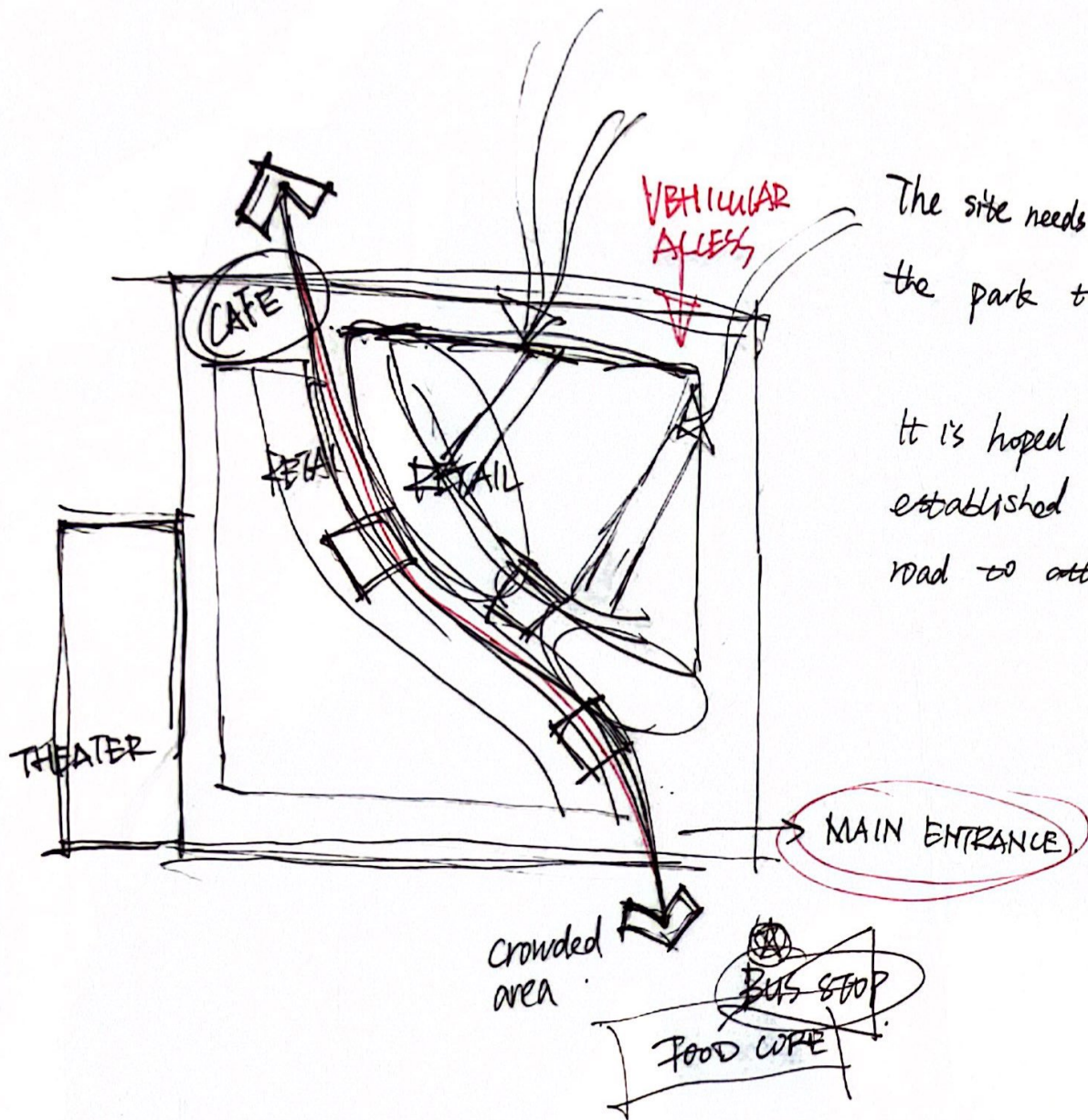
FIRST NATIONS CULTURE



PC30



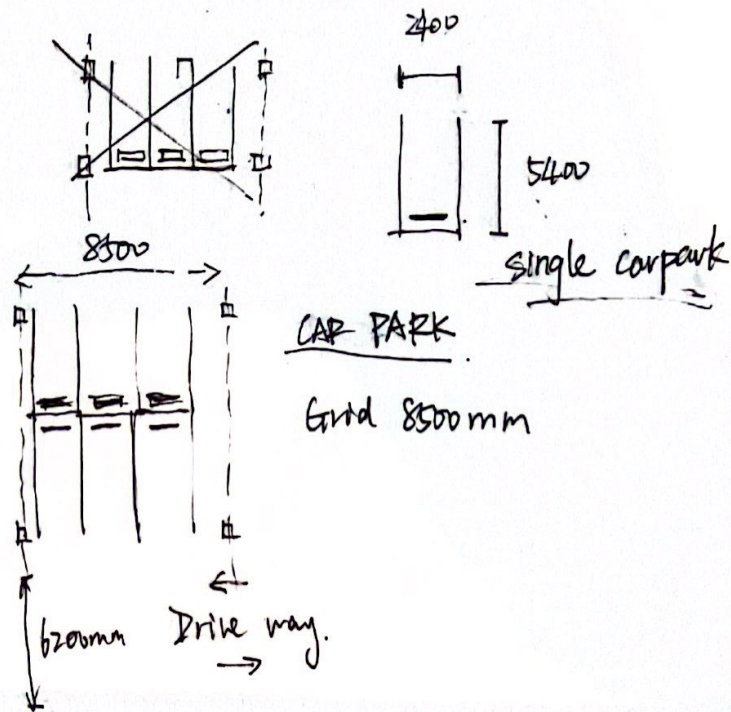
PC26
PC30

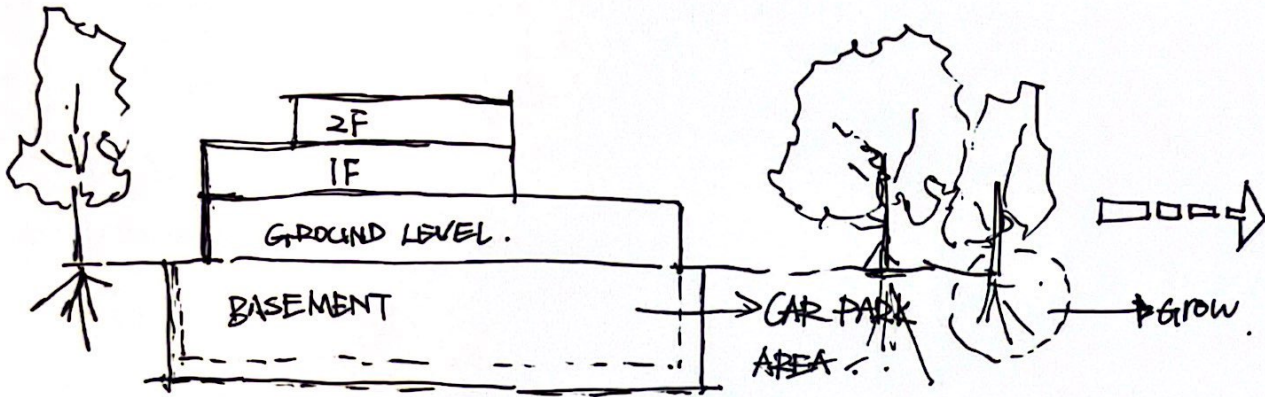


The site needs to run through to connect the park to the main street.

It is hoped that retail stores will be established on both sides of the connecting road to attract guests to patronize.

BASMENT SPACE





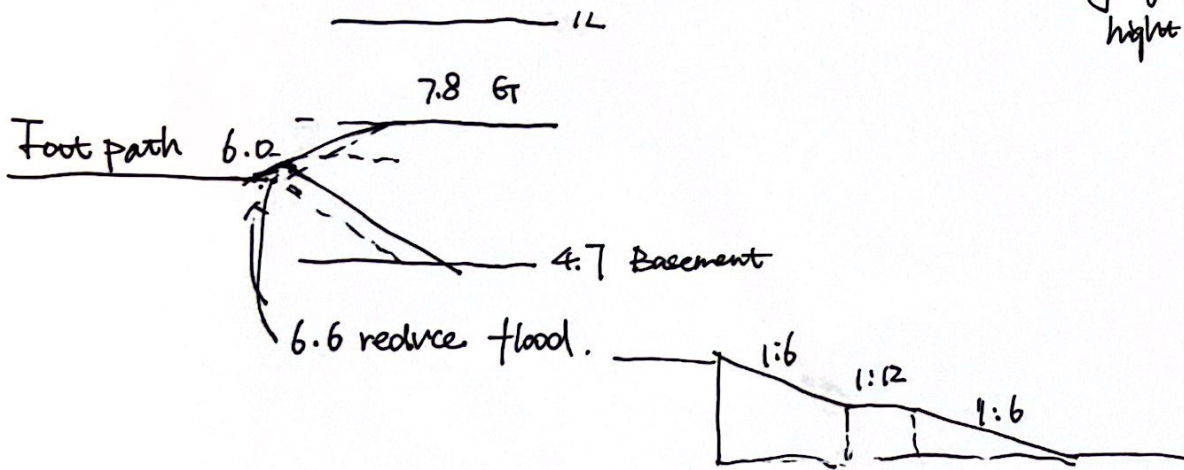
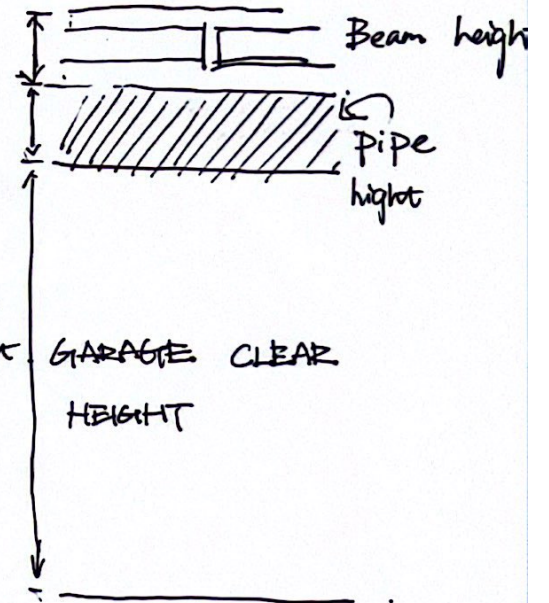
Deep plants should be outside the boundaries of the basement level, allowing for the growth of the root system.

The frame wall of the basement garage needs to be larger than or equal to the exterior wall frame of the ground floor building.

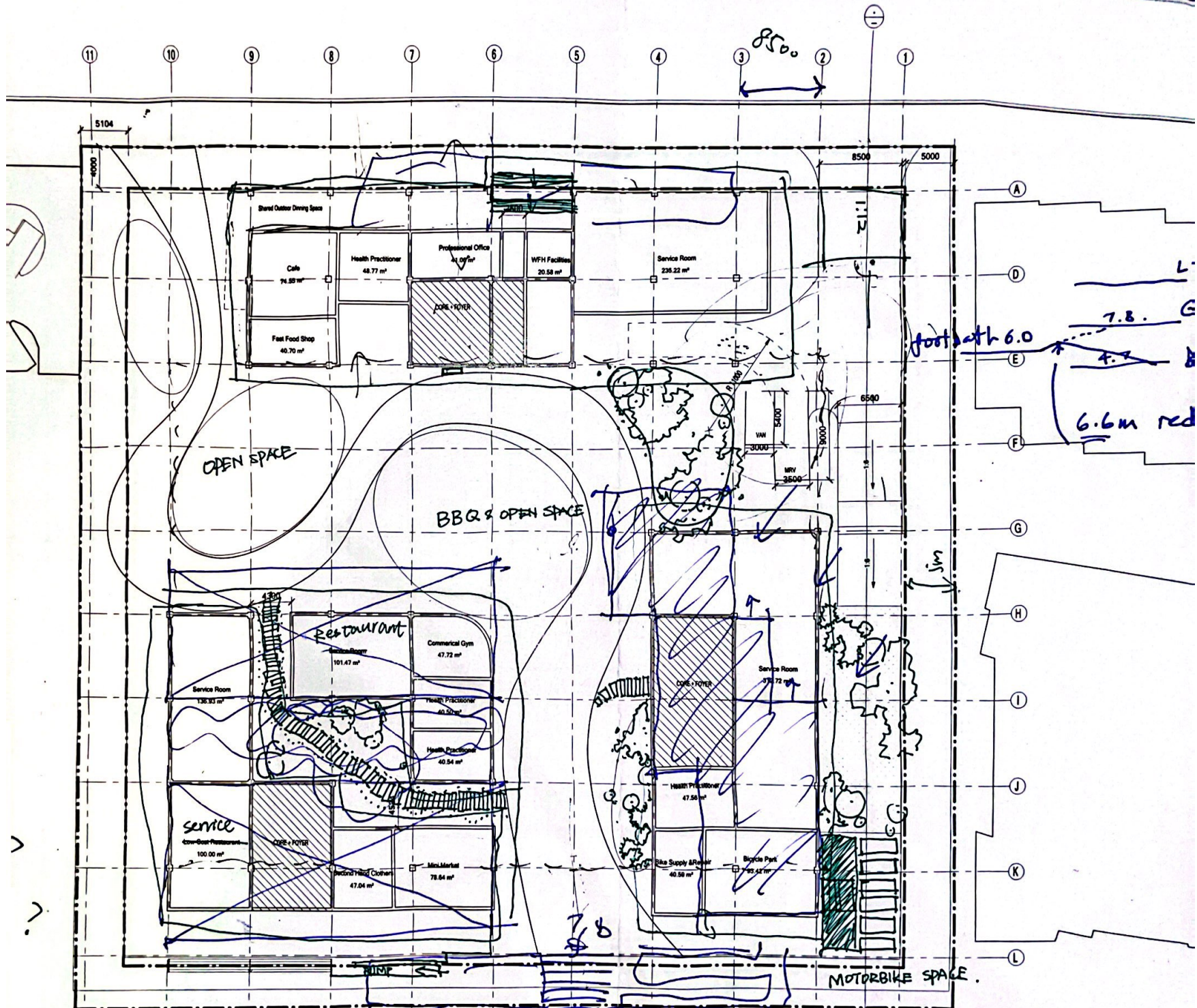
Basement level height

$$0.1 + 2.2 + 0.6 + \text{beam height} = 2.9\text{m} + \text{beam height}$$

↑ reserved ↑ garage clear height ↑ pipe height



pump for basement car park.



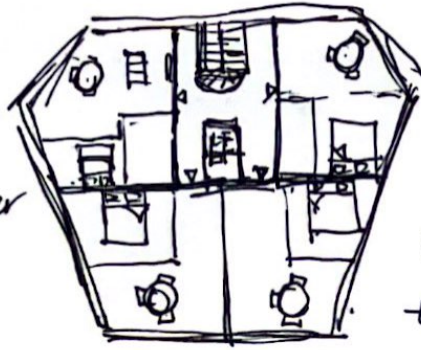
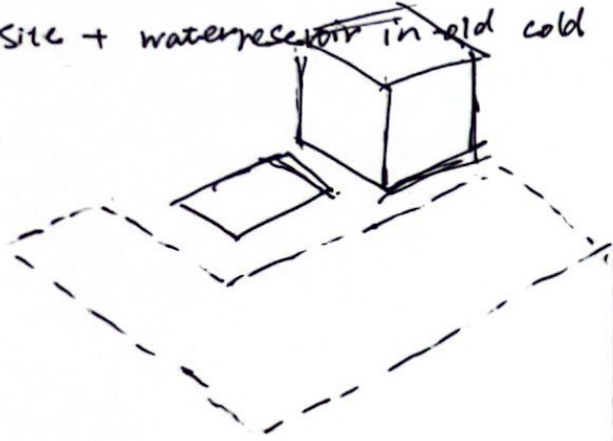
Ground floor



Case study of Apartment.

De Knekerij apartment

Site + water reservoir in old cold war bunker

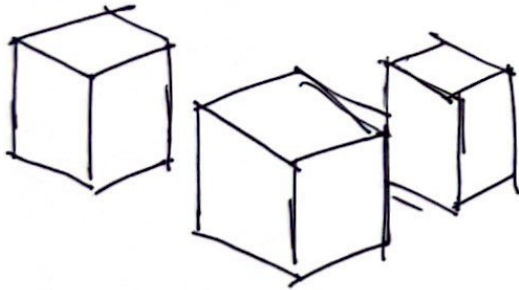


All these homes are corner apartments, making them very light inside and not looking into each other's bedrooms. What they also did smartly is ensure that there is little traffic space in the building. there is no large halls.

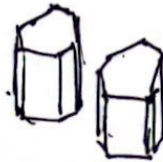
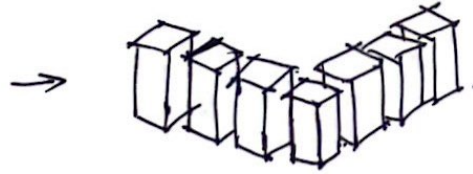
on the ground floor, have bicycle workshop, a small cold war museum, a cafe, restaurant & common areas.

active social & commercial pinch.

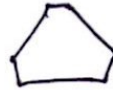
volumes proposed by municipality



volumes proposed by Arons & Gelauff.



adjusting towers for good orientation.



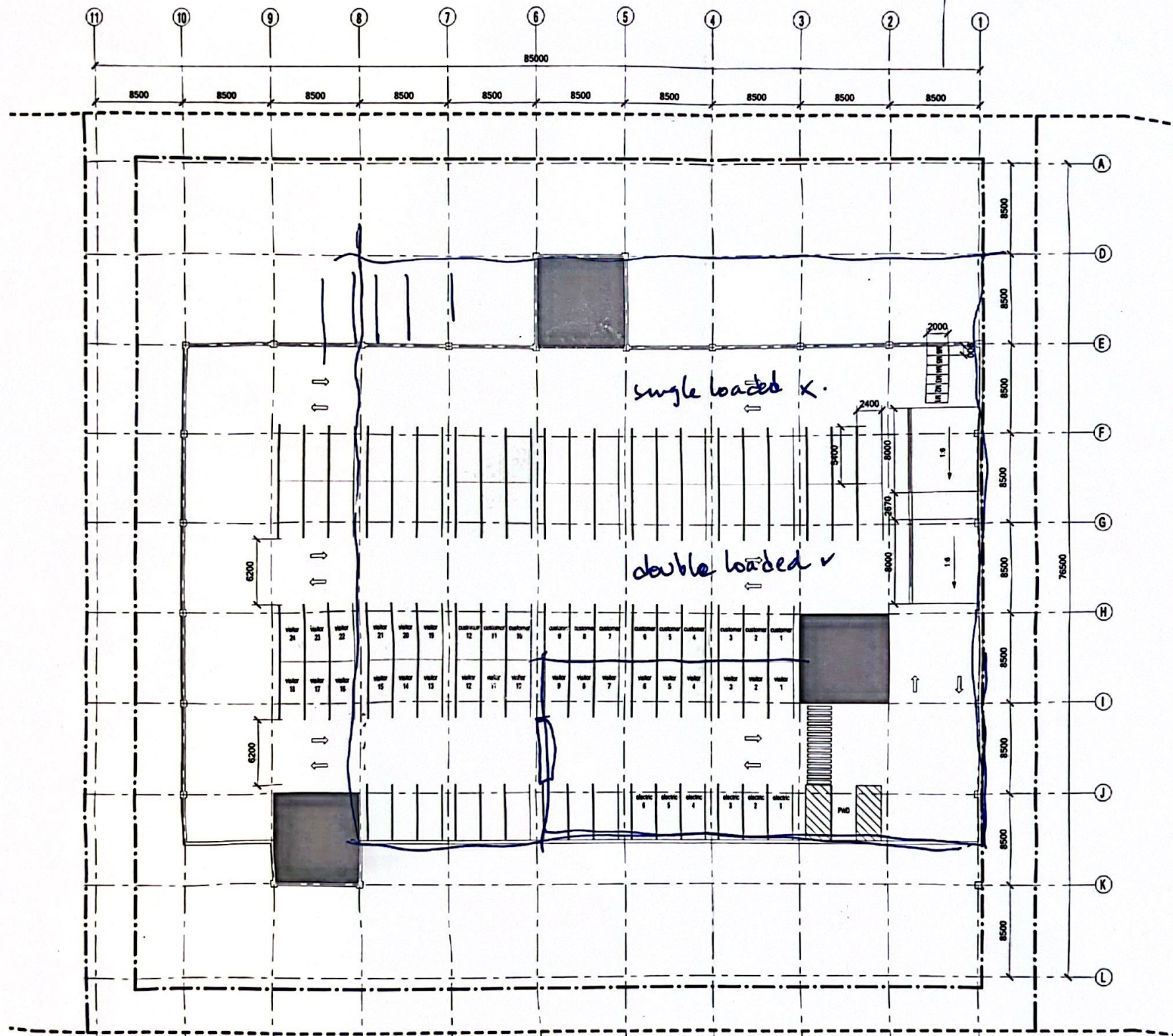
all units in two-sided. shape is



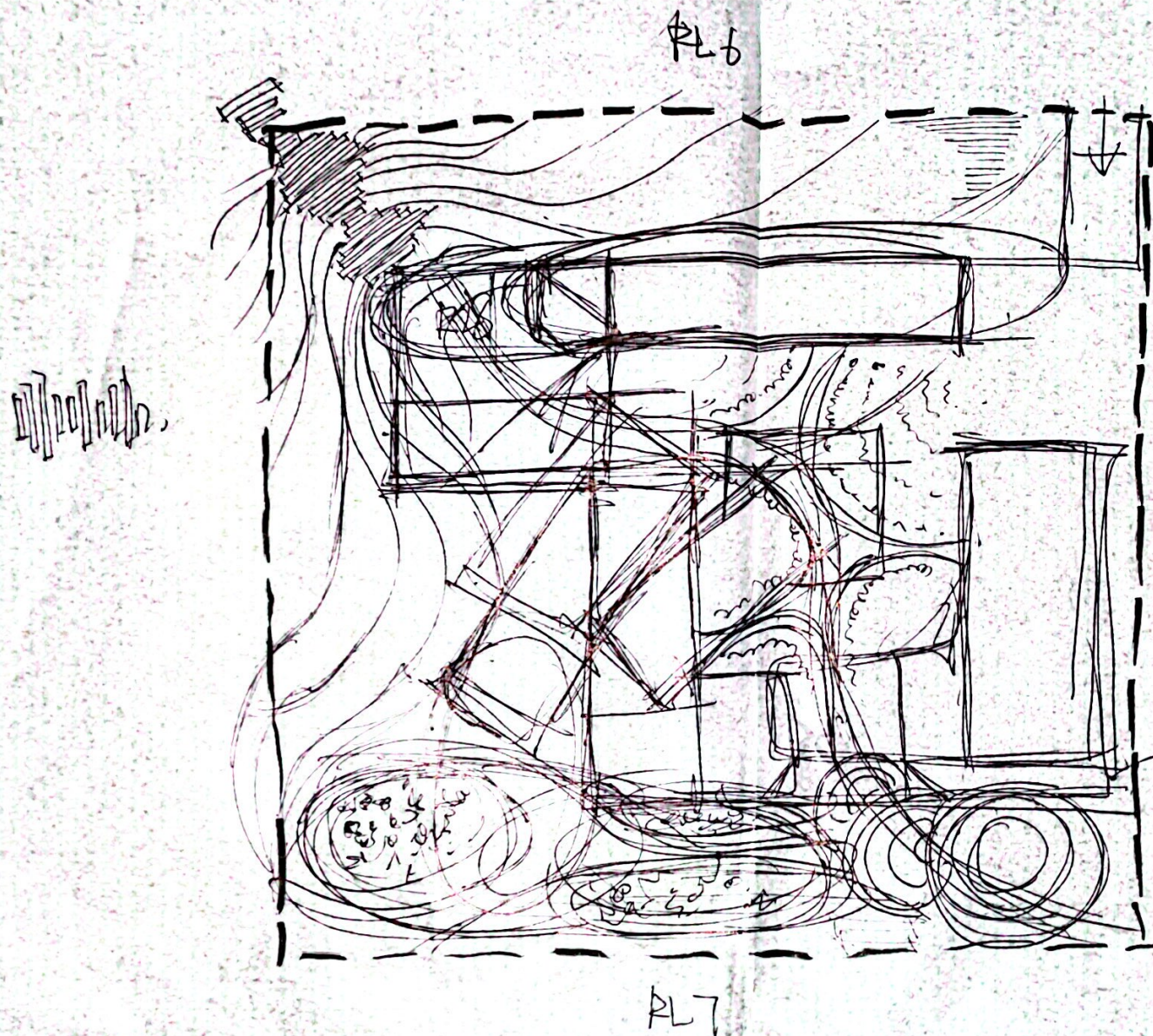
MAKE REASONABLE USE OF CORNER SPACE LAYOUT TO TURN WEAKNESSES INTO STRENGTHS.

PC18





PC26
PC29
PC30



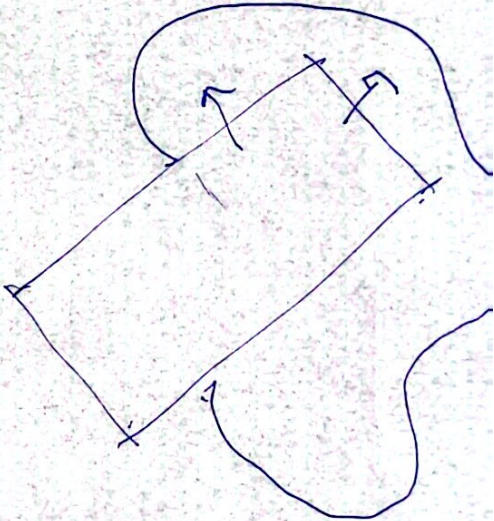
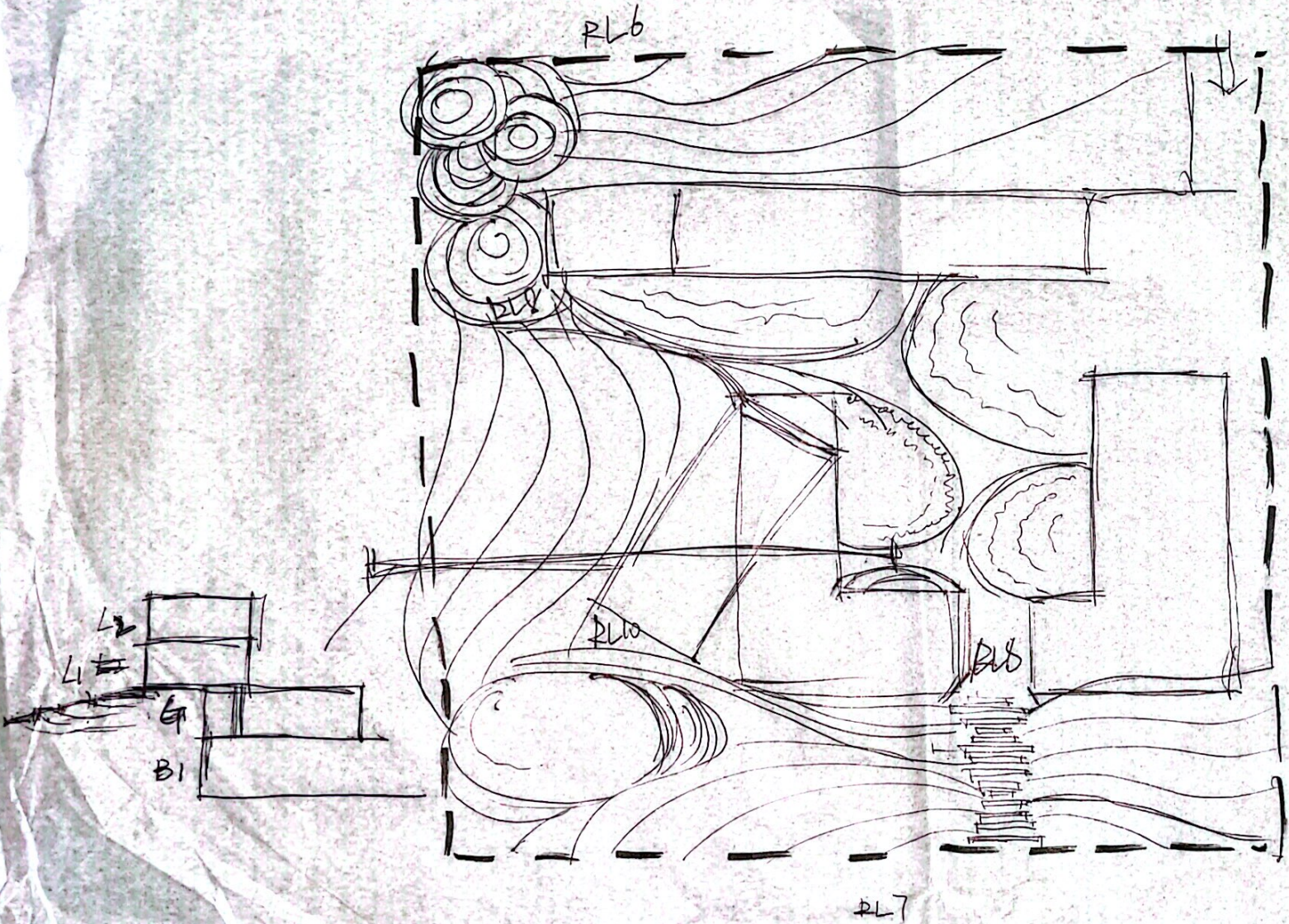
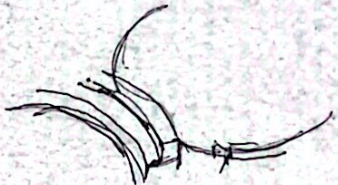
Spirit of the Land.

elements such as sacred geometry
traditional motifs. & natural materials
are incorporated to evoke a sense
of place and belonging.

→ BASEMENT LINE.

the sacred relationship
between humans & the natural world.

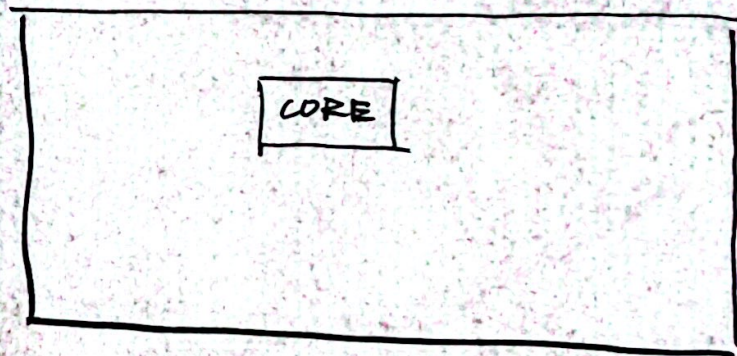
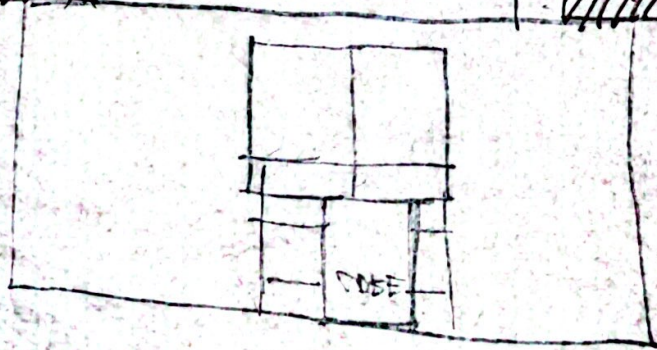
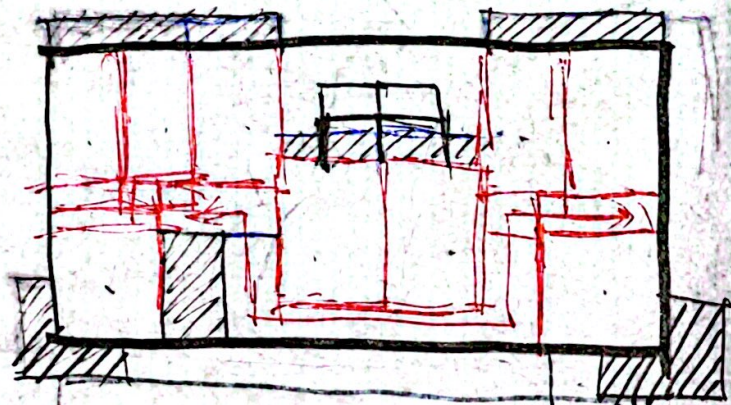
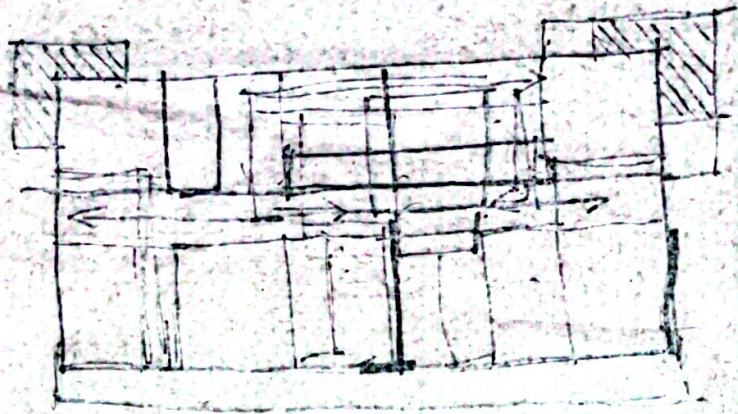




3500 x 4 14000

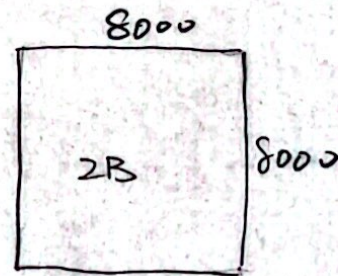
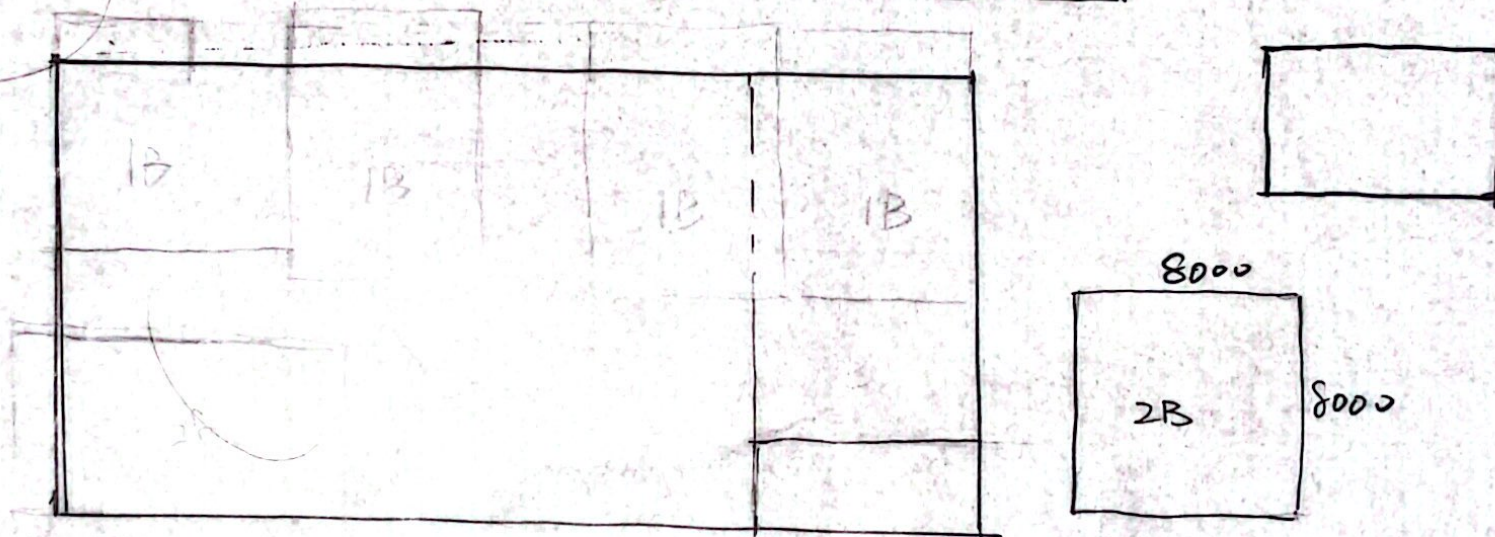
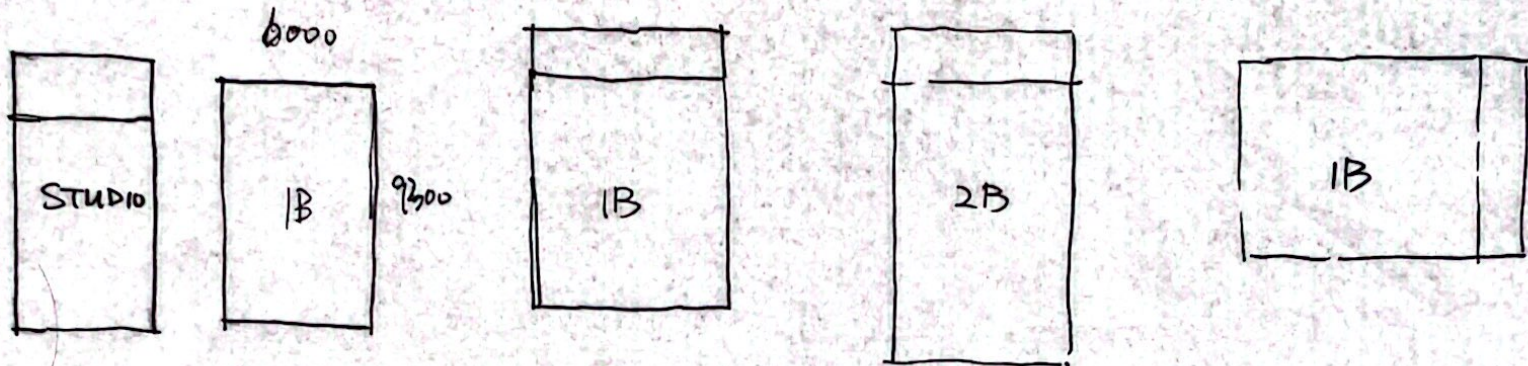
$$\begin{array}{r} 3500 \times 5 \\ \times \\ \hline 17500 \end{array}$$





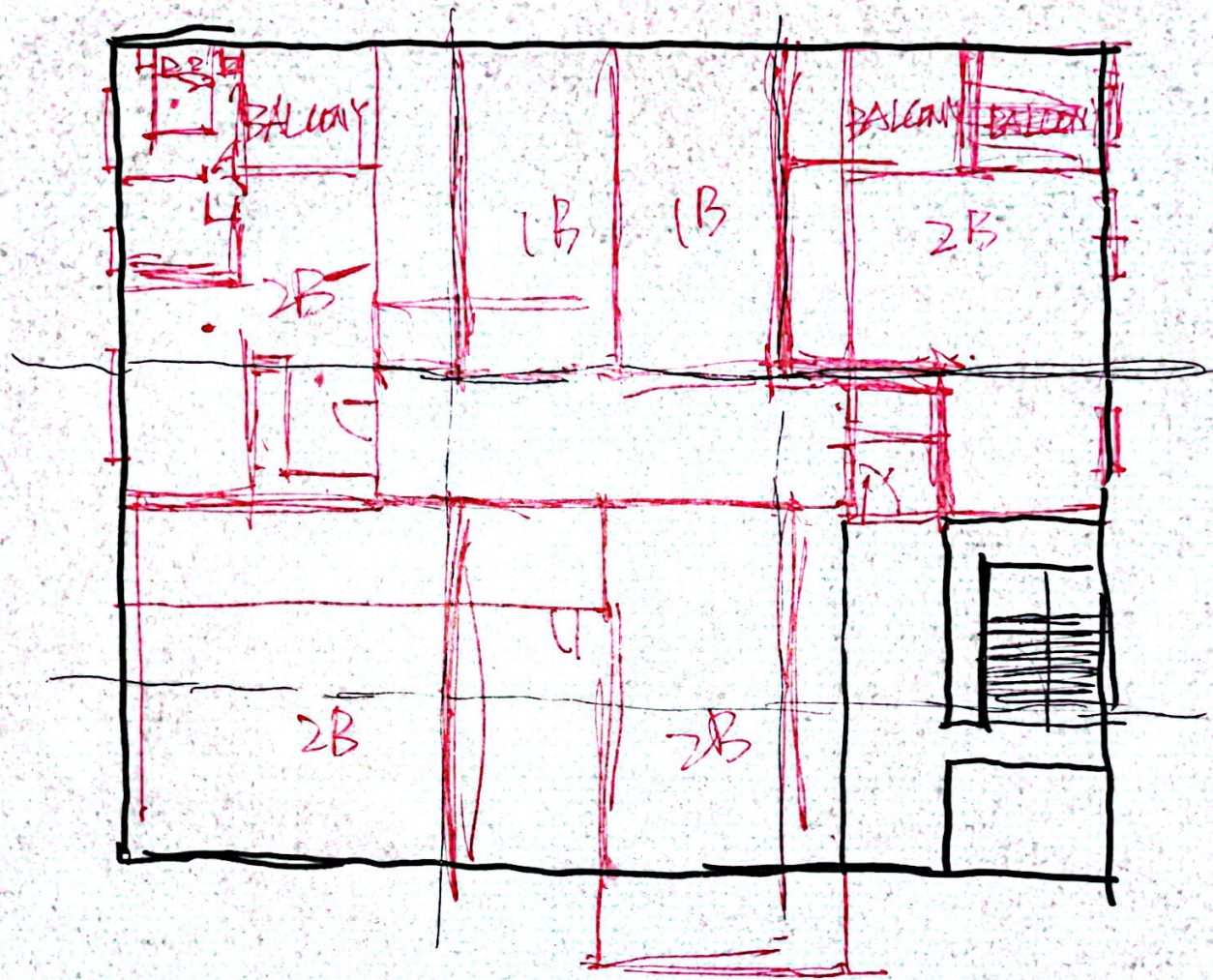
⑦ 2B ⑥ 2B
 x8
~~7x4=28~~ 48.





~~② 3B~~
 剩 ① 3B
 ② 1B
 ①
 ② 1B ③ STUDIO
 ② 3B
 ② STUDIO
 ② 2F - 4F





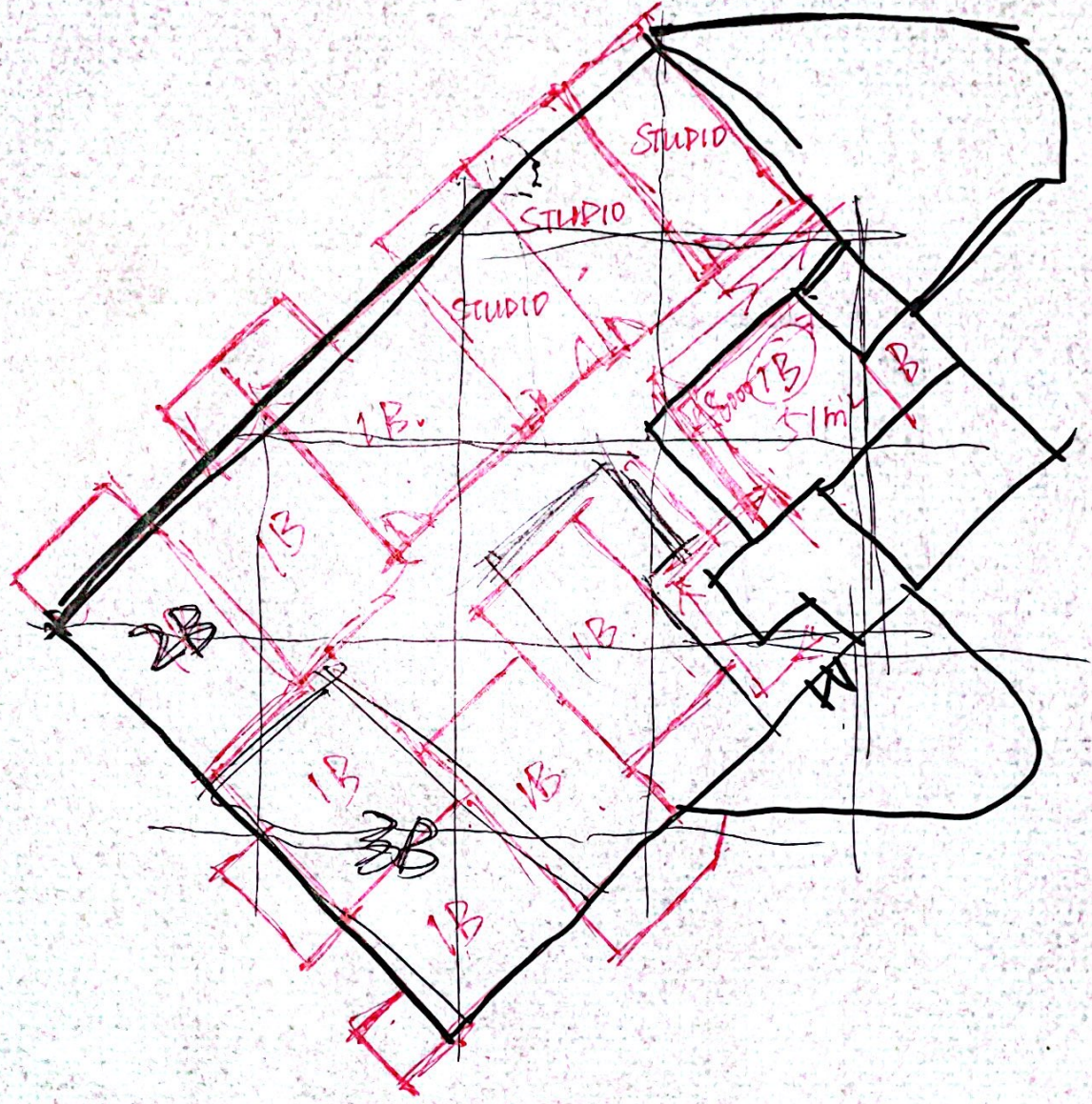
~~④ 2B~~

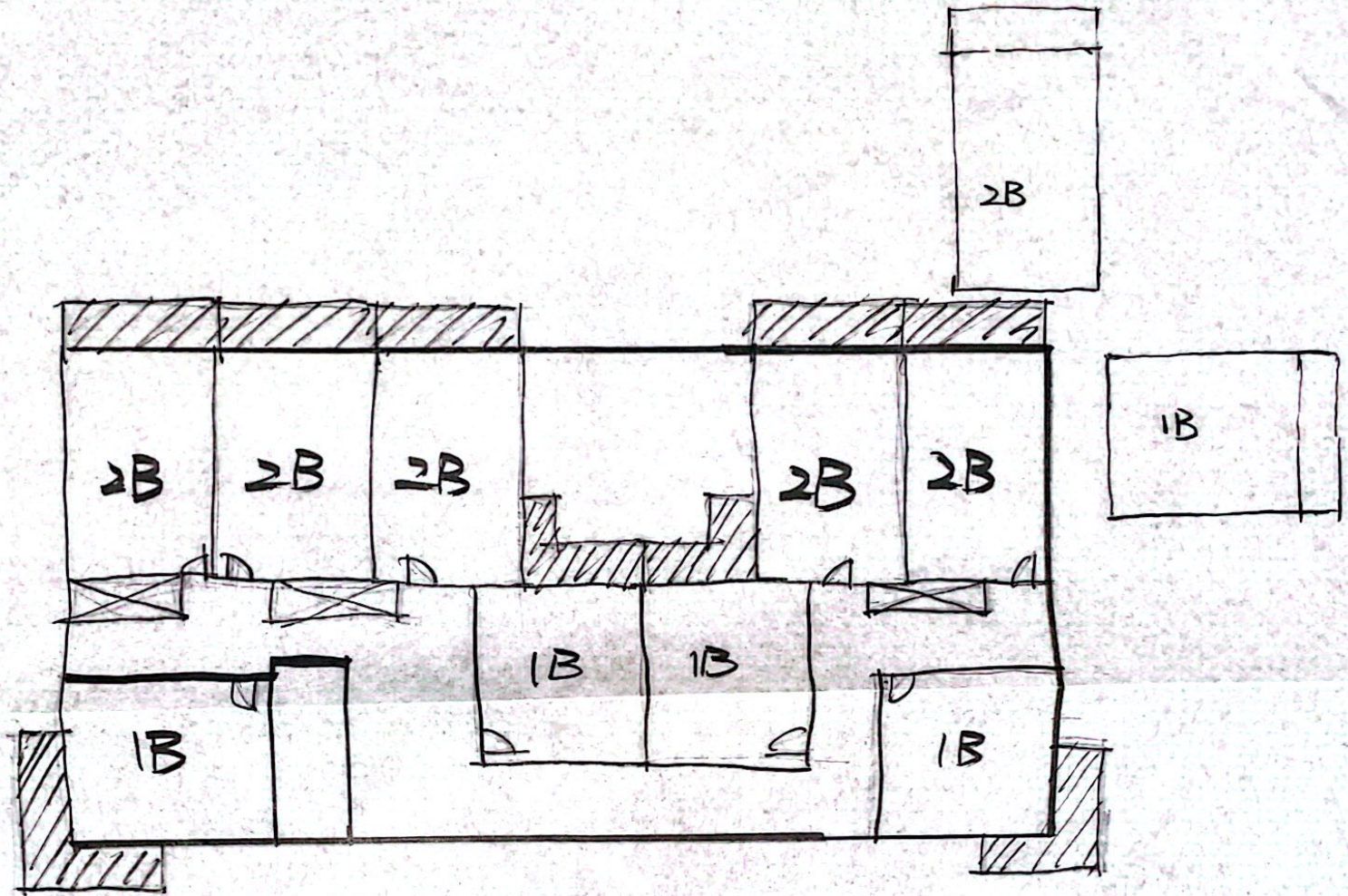
① 2B

① 3B

⑤ 1B

③ STUDIO





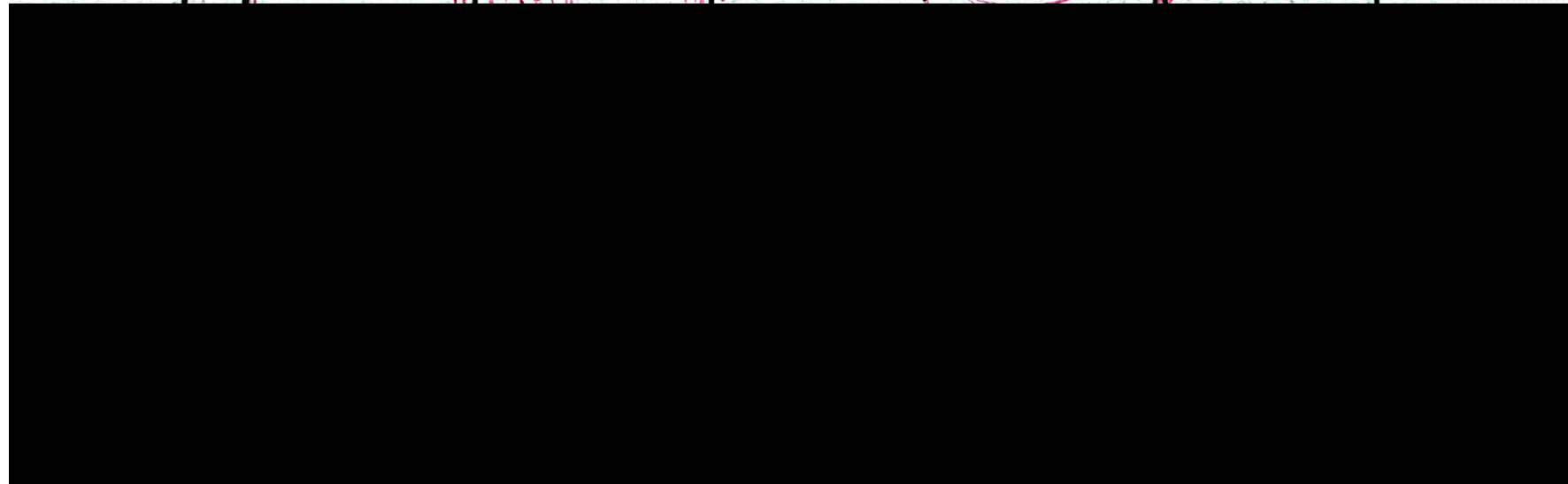
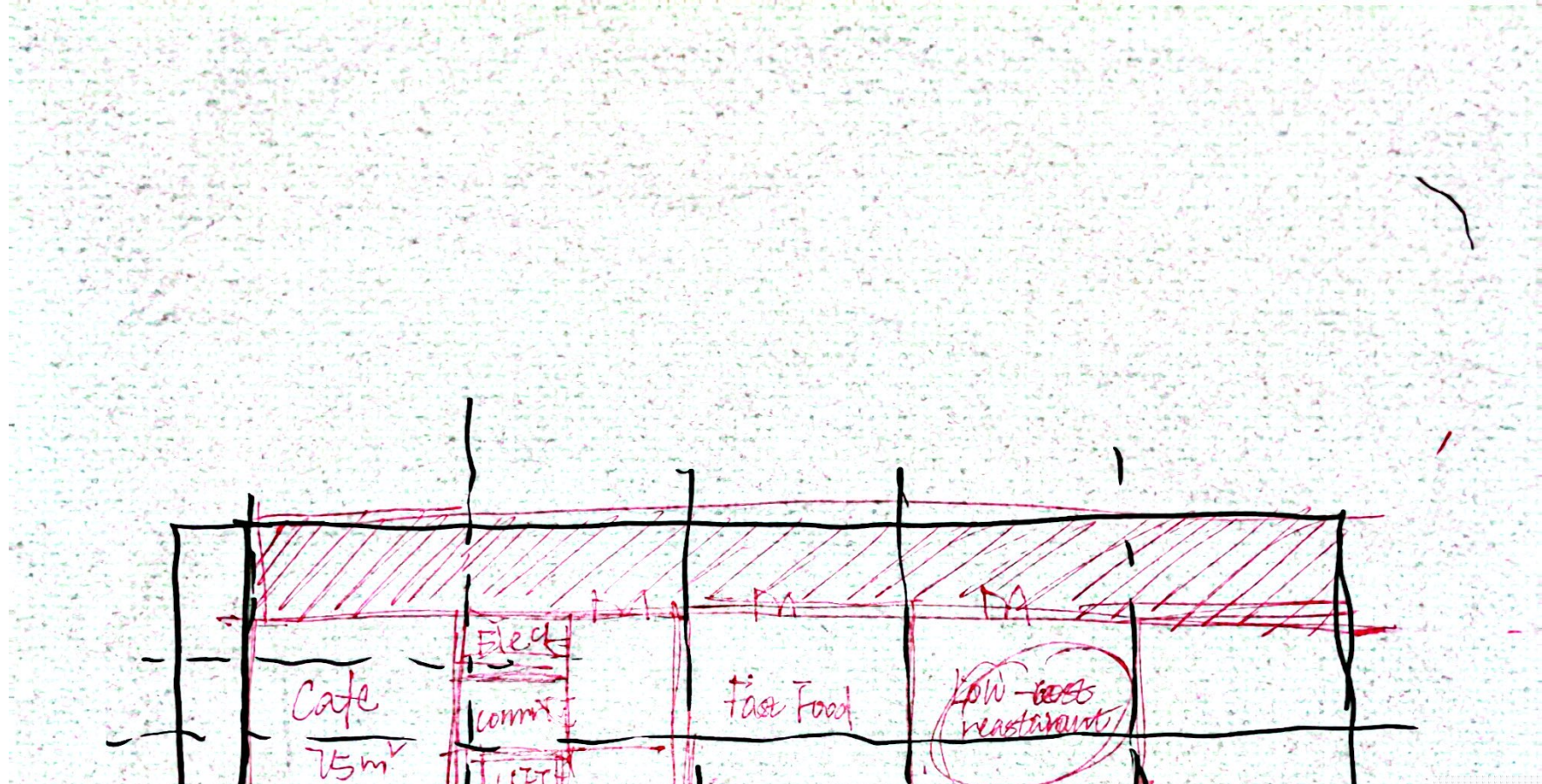
Each level (5) 2B (4) 1B

4 levels

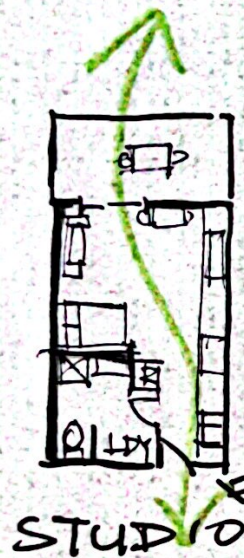
(20)

(16)

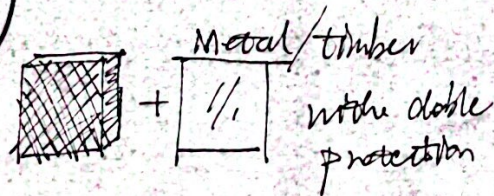
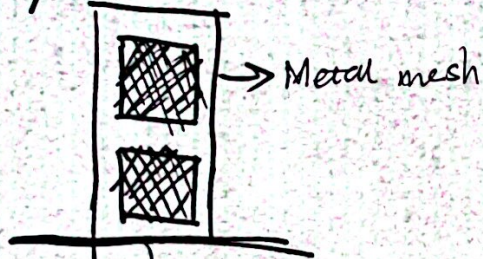




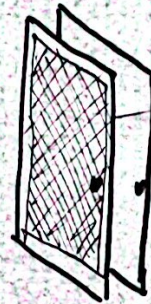
Entrance door Type



Type ①



Type ②

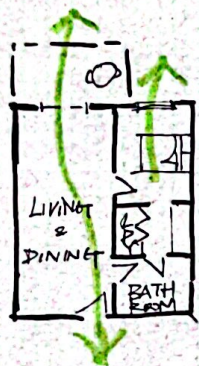


Use two doors
→ one for ventilation
→ one for lock

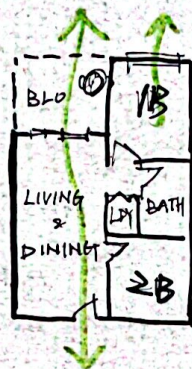
when the room need ventilation, can open the metal door, only close the timber metal mesh door so the wind can go through the whole room.



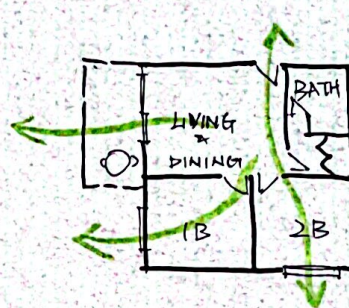
1 & 2 BEDROOM



1 BEDROOM



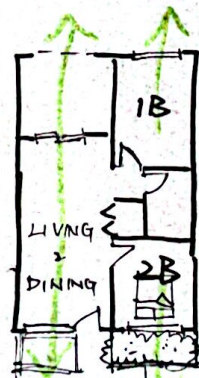
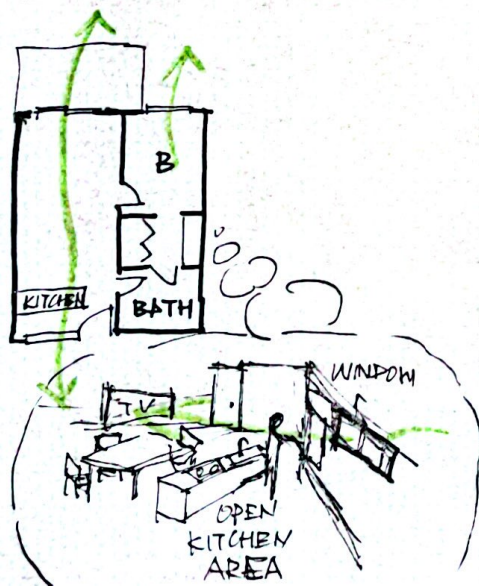
2 BEDROOM (TYPE 1)



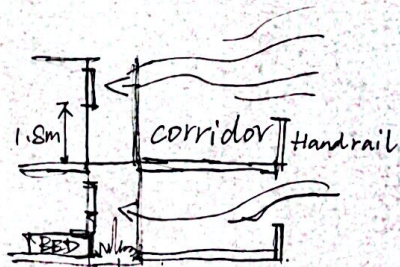
TYPE 2

↓ CHANGE

↓ CHANGE



plant box/void area



level 1 have plant box
the shelter from the corridor passing by.

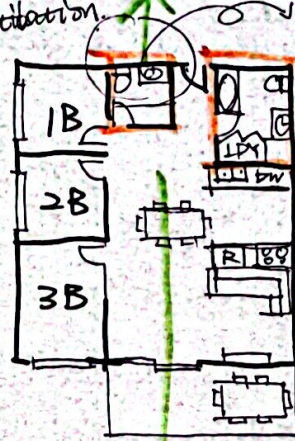
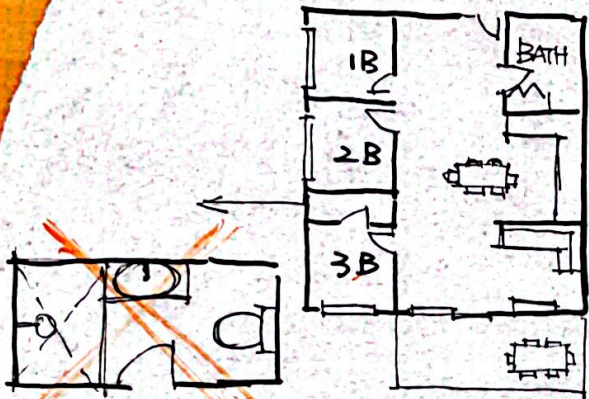


3 BED ROOM

Don't have good ventilation

BATHROOM

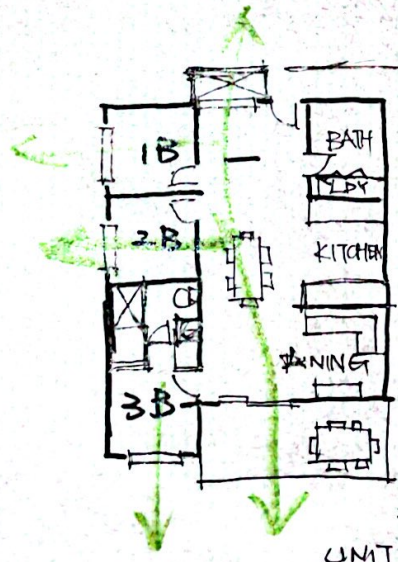
is too far away from the 3B and two of the bathroom is too near



NEW



The master bedroom ~~has~~ only have sink and toilet don't have shower place



ALSO ADD VOID AREA AT FRONT OF THE DINING ROOM

PUT FACE THE CORRIDOR WINDOW AT 1800MM HIGH

3000 UNIT LEVEL
1800 mm



PLANT BOX



AS the ~~shelter~~ fence
shelter
from the neighbor unit

1 BEDROOM

Each layer of green plant
box is misaligned to create
an irregular beauty.

Add the plant box at one bedroom
which can not only increase the shelter
of plants, but also increase to
↑ communication between neighbors
and will not be completely closed.

Facade effect.

