



MAKE SHIFT

School of Architecture, Design and Planning
Graduate Exhibition 2024

School of Architecture, Design and Planning

Graduate Exhibition 2024

Acknowledgement of Country

We acknowledge the Traditional Owners and their custodianship of the lands on which we meet.

We pay our respects to their Ancestors and their descendants, who continue cultural and spiritual connections to Country.

We recognise their valuable contributions to Australian and global society.

Welcome to *make shift*

For the first time ever, architecture, design and planning students are collaborating on works showcased within this year's graduate exhibition.

The theme of make shift reflects our time in university, starting to define ourselves and testing what we're made of.

We are shape shifting; we are reforming, reassembling, and responding to our environment. We are making, creating and showcasing our ideas as we shift into the next stage as professionals.

As we look towards the future, we're bringing with us a cohort of strategic thinkers, change-makers and idea generators who are willing and able to spark conversations and think creatively at all scales to help our people, places and communities.

The logo for 'MAKE SHIFT' is located in the bottom right corner. It features the words 'MAKE' and 'SHIFT' in a bold, blue, sans-serif font. The letters are slightly tilted and have a hand-drawn, blocky appearance. The 'S' in 'SHIFT' is particularly large and overlaps with the 'M' in 'MAKE'.

School of Architecture, Design and Planning

The School of Architecture, Design and Planning embraces a cross-section of industry partnerships, diverse communities and a range of professions in our teaching and research, ensuring our work is relevant, forward-looking and meaningful.

Our students are guided in hands-on studio work to creatively problem-solve real-world issues and be inspired to advance their knowledge and capabilities in a lively and supportive learning environment.

This is a challenging time for architecture, design and planning profession, but it is also an exciting and critical moment. This is our opportunity to be part of shaping a healthier, more resilient future.

The logo for 'MAKE SHIFT' is located in the bottom right corner. It features the words 'MAKE' and 'SHIFT' stacked vertically. 'MAKE' is in a bold, blue, sans-serif font. 'SHIFT' is in a similar font but is slanted to the right. The letters are white with a blue outline, giving it a 3D or layered appearance.

Special thanks

To the teachers

For all that you have imparted on us, and how you have challenged us, moulded us, and guided us. Thank you for your unwavering support and dedication to our success. You have left us with invaluable knowledge, tools, and skills, that we will cherish and hone throughout our careers. We promise to continue building upon the foundations you have helped us lay as we move forward.

To the UQ ADP community

For your continued support and guidance in our studies and as we embark into the diverse community of members past and present. Thank you to the lineage of past students, teachers and staff that continue to support us and give back to the School. As the first exhibition to bring all three disciplines together, we hope to contribute to the strong legacy of collaboration and shared learning within the School.

To the societies

For your vital role in shaping our student life, culture and community. Your events and activities have enriched our university experiences, provided some much-needed moments of levity, and strengthened our industry opportunities.

To our families and friends

Our achievements would not have been possible without your patience, love, support, and belief in us. Thank you for all the endless chats about our work, submissions, tasks, late night cups of coffee, and the listening, we appreciate it immensely.

To the exhibition team

This event would not be possible without all the time and energy you have invested in this year's exhibition. Thank you for all your efforts in coordinating, organising, cultivating, and executing *make shift* 2024.

To the graduating cohort of 2024

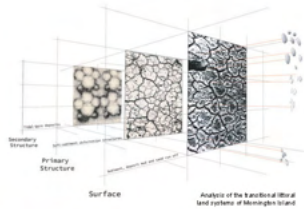
For your perseverance, resilience, and dedication over these past few years, we should all be very proud of our achievements. Our journeys have been rife with challenges, tests, and difficulty, but we have emerged triumphant on the other side. As we progress into our next chapters, we hope to hold onto the memories, friendships, and experiences that shaped us from our time at UQ.

The logo for 'MAKE SHIFT' is located in the bottom right corner. It features the words 'MAKE' and 'SHIFT' stacked vertically. 'MAKE' is in a bold, blue, sans-serif font, and 'SHIFT' is in a larger, bold, blue, sans-serif font. The letters are slightly tilted and have a hand-drawn, blocky appearance.

**Students listed
alphabetically**

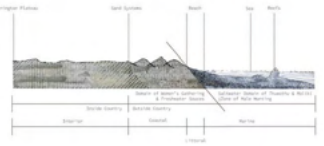


Women's Studio



Surface

Analysis of the transition of liberal land systems of Mornington Island



Transition between inside and outside, Country and systems and their associated Land cultural practices



Contemporary Grand Pavilion



Western Sector Entrance



Art Display Space

ARCH3100



MIRNDIYUN GUNANA ART CENTRE

In this studio, our project was to design a new art centre for our client Mirndiyun Gununa, Mornington Island Art Centre. My design focuses on the deep-rooted symbiotic relationship the Lardil people have with Country. The perforated aluminium screens allow for light interaction between the interior and exterior environments. The building itself emphasises the flow of Jirrkarampen Wanngal (Northwest Wind) and the sea-land connection. Its materiality of stone and concrete; a combination of sand & water, reflects the coastal land systems of the island. The transitions between interior and exterior are stretched, creating a seamless promenade between the interior and exterior. The studio spaces are passively cooled with openings allowing for the Jirrkarampen Wanngal, and a lightweight rain screen. The roof form emphasises the path of this wind, and it's relationality between the two separate sectors.



Ground Floor Plan



Section A

E01 West Elevation



Section B

E01 East Elevation



E02 South Elevation

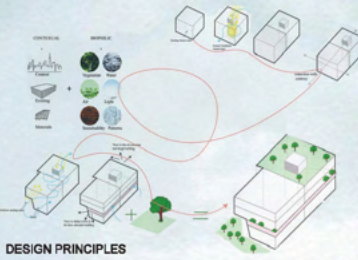


Maryam Abushaaban

Architecture
UNDERGRADUATE



FLOOR PLAN / LEVEL 1



DESIGN PRINCIPLES



SITE PLAN
LOCATION: UQU CENTRAL LIBRARY

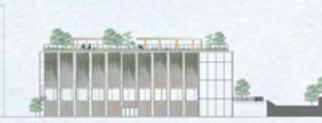
ARCH3200 - Architectural Design: Tectonics and Precision



EAST ELEVATION



SOUTH ELEVATION



WEAST ELEVATION



NORTH ELEVATION

VERDANT LEGACY

"Verdant Legacy" is a library design that merges biophilic principles with contextual sensitivity, creating a space where nature and history coexist. By retaining key heritage elements, such as concrete, and introducing sustainable, modern solutions, the design balances old and new. Natural light, abundant greenery, and flexible spaces foster well-being, while a roof garden and community areas enhance user engagement. The interior use of cross-laminated timber (CLT) alongside a calming color palette creates a warm, inviting environment that supports learning, relaxation, and interaction for students, staff, and the surrounding community."



NESRIN ALHAJAL

Architecture / Design / Planning
UNDERGRADUATE

DSGN3200

Norway, a country known for its inclusive welfare system, face numerous challenges within their healthcare system. Several immigrants struggle to navigate the healthcare system, both upon their arrival in Norway even after several years of living in the country.



Health Disparities Among Immigrants: Challenges and Pathways to Equity

Immigrants face several issues with navigating the Norwegian healthcare system that native born Norwegians do not need to face. This is due to language barriers, lack of information, cultural differences and low health literacy. While some effort has been made to address this issue, more work is needed to ensure that all residents, regardless of their residential status, can fully benefit from the Norwegian Healthcare System.



User Journey:



Arriving in a new municipality

How to navigate the system and find useful information. Find the navigation to the website



Open up package and find useful information. Find the navigation to the website



Receiving a message that package can be collected



Collect package at Bydelskvinnene offices



Sign up to the website or app and navigate an easier universal healthcare platform



Detailed Description of Final Design:

There has been a significant amount of research and consultation with the population of the region in Norway. Designing a healthcare system that is inclusive and accessible to all individuals, regardless of their background, can seem like a daunting task. However, by involving users in the design process, we can ensure that the system meets their needs and is easy to use. This report aims to provide a detailed description of the final design, including the user journey, design methods, and final design.

8. Final Design

Aim: The goal is to create a digital healthcare system that is inclusive and accessible to all individuals, regardless of their background. The design approach is user-centered and evidence-based, ensuring that the system meets the needs of the population and is easy to use.

Design Methods and Tools

Methods: The design process involved several methods, including user interviews, surveys, and usability testing. The design tools used include Figma for prototyping and Adobe Illustrator for final design.

Tools: Adobe Illustrator

Adobe Illustrator was used for creating the final design and preparing the assets for printing and digital distribution.

Research and User Insights: The research phase involved conducting interviews and surveys with the target population. Key insights included the need for a simple and intuitive interface, the importance of clear instructions, and the need for a system that is accessible to people with low health literacy.

Key Insights or Challenges: One of the main challenges was ensuring that the system was accessible to people with low health literacy. This was addressed by using simple language, clear instructions, and a user-centered design approach.

Continuing, iterative and iterative: The design process was iterative and user-centered. We conducted several rounds of usability testing and incorporated user feedback into the design. This ensured that the final design met the needs of the population and was easy to use.

Key Insights: One of the key insights was the importance of clear instructions and a user-centered design approach. This was addressed by using simple language, clear instructions, and a user-centered design approach.

Tools: Adobe Illustrator was used for creating the final design and preparing the assets for printing and digital distribution.



A visualisation of the design approach used for this report



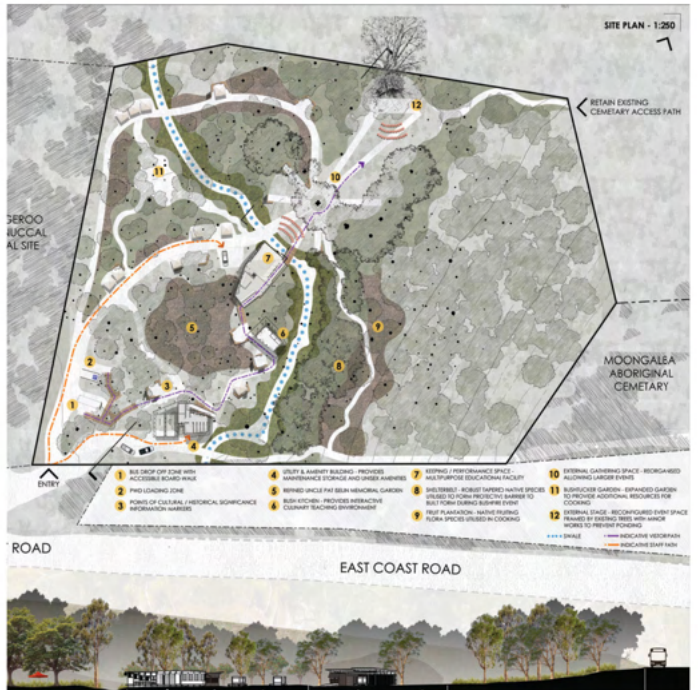
Graphics created with Revit, Twinmotion and Adobe Photoshop

ARCH7005

TERRA BULLA LEUMEAH

Llewyn Andrew is a Masters of Architecture Graduate with 3.5 years of experience in professional practice, working across a variety of typologies ranging from Clinical, Education, Defence, International, Institutional, Interiors, Heritage and Multi-res. Llewyn is also the recipient of R. Martin Wilson Award for creative integration of Technology into design. Llewyn is passionate about user-centred design and Indigenous representation through design and consultation.

The Terra Bulla Leumeah scheme is situated on North Stradbroke island and is designed to respect the immense cultural value of the previous Myra Mission site and its deep importance to the Quandamooka People. The landscape management strategy was placed at the forefront of the design which included the high BAL site rating, overland-flow mitigation and a new centralised performance space that facilitates cultural engagement and learning activities. The 3 small-scale built interventions fade into the background, as to not disturb immersion into the site.



LLEWYN ANDREW

**Architecture
MASTER**



PROJECT OF VICTORIA ANIKEEVA



LEAF WHISPER

PERSONALIZED WEARABLE WAYFINDING DEVICE

EMPOWERING RESIDENTS TO NAVIGATE LIFE WITH CONFIDENCE AND INDEPENDENCE



USER SCENARIO

When a user gets lost, they simply activate the LeafWhisper device. The device's GPS immediately kicks in, sending a signal to the integrated speaker. The speaker then starts providing voice guidance, using a familiar voice that the user has chosen, such as that of a family member or friend. As the user follows the directions, the speaker dynamically adjusts the route as necessary to ensure the most efficient path. Finally, the user safely arrives at their destination, guided seamlessly by the personalized navigation support of LeafWhisper.

The LeafWhisper project is a groundbreaking initiative aimed at enhancing the lives of residents in aged care communities through personalized navigation support. This project focuses on co-designing innovative solutions for aged care facilities.

The primary objective is to develop a personalized wearable wayfinding device that empowers residents of Anam Cara with a sense of autonomy, dignity, and comfort. Unlike traditional devices, LeafWhisper offers a seamless and stylish way to navigate their environment.

KEY FEATURES:

Personalized Voice Guidance:

Residents have the freedom to choose familiar voices, like family members or friends, to provide tailored navigation assistance, enhancing their sense of comfort and familiarity.

Stylish Wearables:

A range of elegant wearables, including rings, bracelets, and belts, designed to complement residents' individual styles while discreetly incorporating essential navigation technology.

Seamless Integration:

With LeafWhisper, integration into the Anam Cara facility is effortless. Collaboration with staff and residents ensures a smooth transition, allowing for easy adjustments and personalized support for every resident.

VICTORIA ANIKEEVA

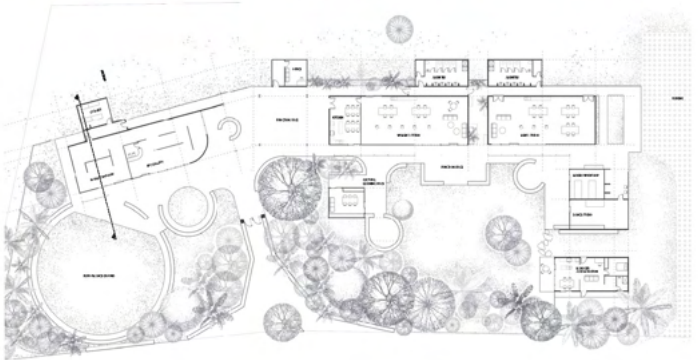
Design
UNDERGRADUATE



ARCH3100

MIRNDIYAN GUNUNA ART CENTRE.

The Mirndiyan Art Centre in Gununa will serve as a culturally significant space for the Lardil people to create, share, and preserve their cultural heritage. The art centre will support the continuation of traditional arts such as dancing, painting and making. The centre was designed with the intent to provide spaces for connection to the land, ancestors, and community. The building design embraces the island's sky and landscape, using open spaces to bring in natural light and views which will remind people of their presence on the island. Through showing where you are, the centre fosters a strong sense of belonging, making the art centre both a cultural hub, and a meaningful gathering place for the Lardil community and visitors to appreciate.



REIS AZLAN

Architecture
UNDERGRADUATE



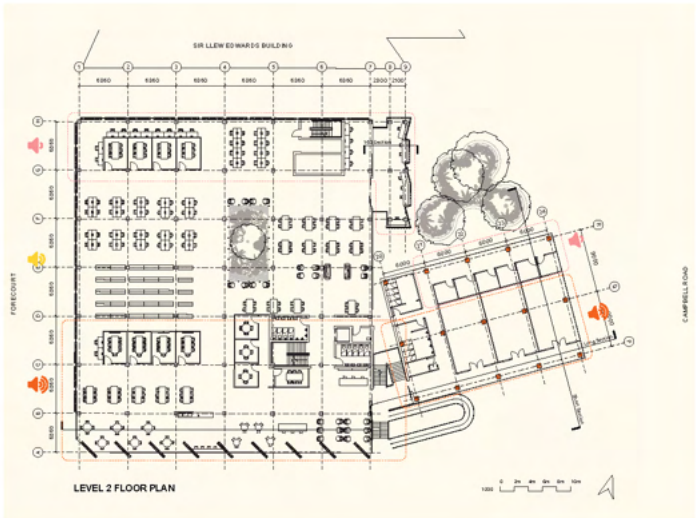
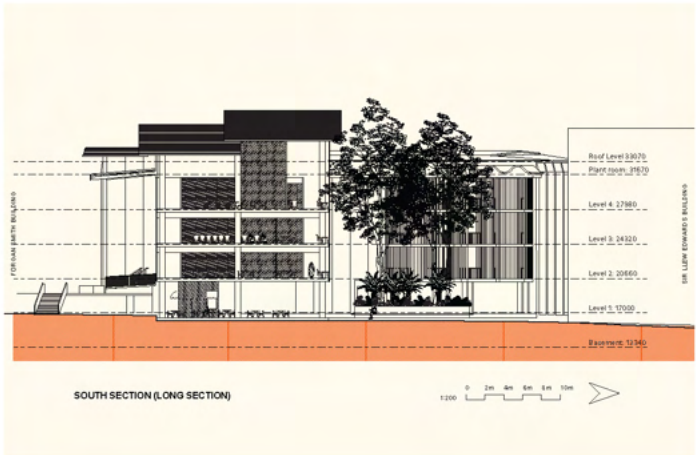
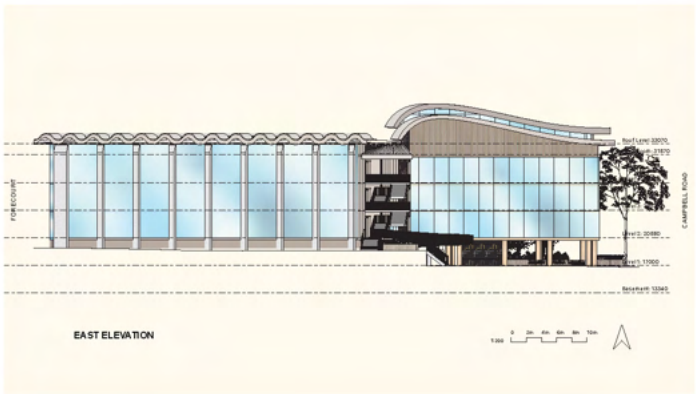
ARCH3200

UQ CENTRAL LIBRARY

RETROFIT & EXTENSION

The current UQ Central Library, dark and stuffy, offers insufficient spaces for students, who often resort to studying on the floor behind bookshelves to find some peace and quiet.

This design proposal prioritises the creation of inclusive spaces that celebrate nature and human experience. By considering sensory zoning principles, like-stimulus activities have been grouped together as shown on the floor plan. Study areas of varying qualities have been created to give students choice, including an open air "tree house", which fosters a connection to nature while studying. By removing concrete panels, including glass in the retrofit and extension and introducing a central lightwell, the library will be filled with soft, natural light. The integration of a central garden, creating views of existing trees, and rain gardens brings nature into the foreground. The transparent circulation system and consistent floor layouts ensure easy navigation. The UQ Central Library retrofit and extension caters to diverse needs, brings nature and light into the space and has considerate wayfinding, aiming to create a place where students feel like they belong.

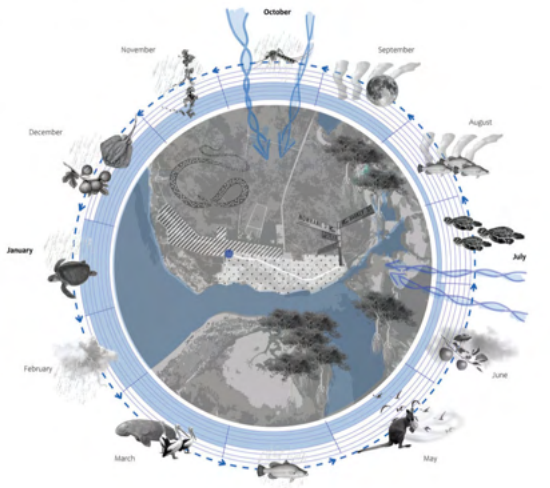


Architecture
UNDERGRADUATE

MIRNDIYAN GUNUNA ART CENTRE, MORNINGTON ISLAND

My name is Jaidyn Boyce and I'm an undergraduate student of architecture with half a year of experience working designing schools and churches. This was my first and favourite project of the year to propose a new design for an Aboriginal art centre on Mornington Island. This centre should be a place

where people of all ages share knowledge, beliefs, and traditions about the Laridj peoples culture and also a foster intergenerational learning through a journey through country. The key journey on site focuses on seasons and tells the story of how the Laridj people embrace cyclones and their bond with nature.



CLIMATE ANALYSIS MAPPING

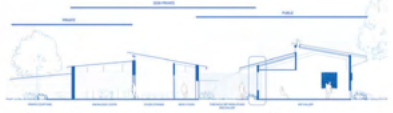
1:5000 Residential & commercial Airport Site Sand Grassy Plains Bush Water Wind Direction Rain Fall



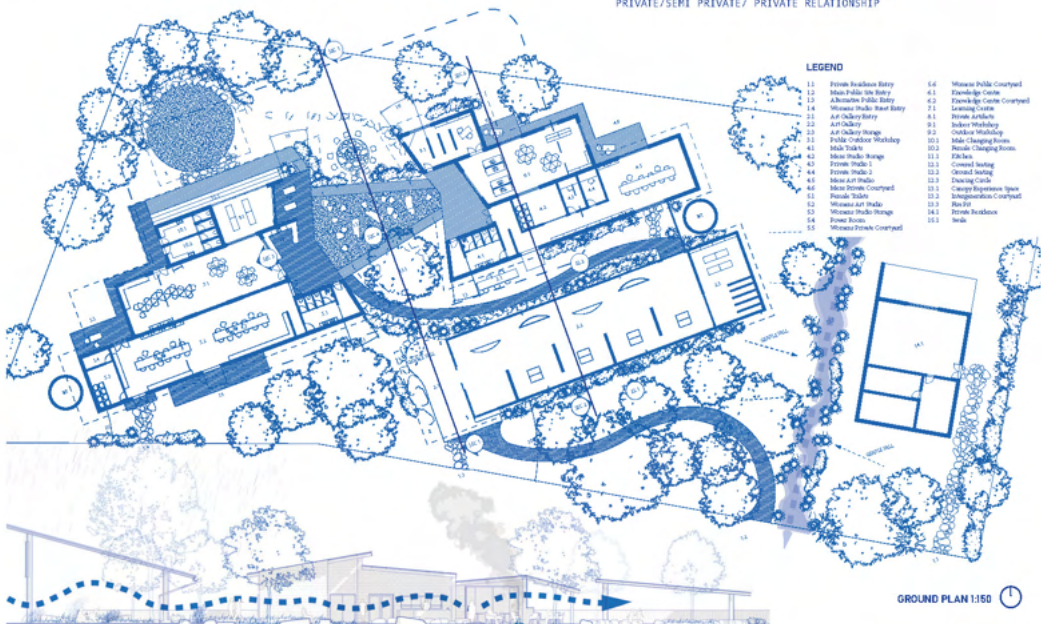
SOUTH ELEVATION OF ART GALLERY (0:150)
TELLING THE STORY OF CYCLONE WINDS SPREADING OAK SEEDS AND LEAVES



NORTH ELEVATION OF ART GALLERY (0:150)
TELLING THE STORY OF FISH TRAPS FILLED WITH FISH AFTER CYCLONES



SECTION THROUGH ART GALLERY AND MENS STUDIO (0:150)
PRIVATE/SEMI PRIVATE/ PRIVATE RELATIONSHIP



LEGEND

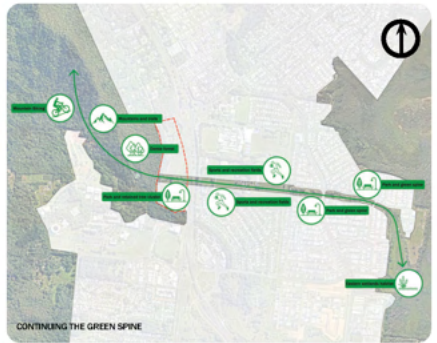
- 11 Female Public Restroom
- 12 Male Public Use Entry
- 13 Aboriginal Public Entry
- 14 Mirnesha Studio (Heat Entry)
- 21 Art Gallery
- 22 Art Gallery
- 23 Public Outdoor Workshop
- 31 Male Studio
- 41 Mirnesha Studio
- 42 Mirnesha Studio
- 43 Mirnesha Studio
- 44 Mirnesha Studio
- 45 Mirnesha Studio
- 46 Mirnesha Studio
- 51 Mirnesha Studio
- 52 Mirnesha Studio
- 53 Mirnesha Studio
- 54 Mirnesha Studio
- 55 Mirnesha Studio
- 56 Mirnesha Studio
- 57 Mirnesha Studio
- 58 Mirnesha Studio
- 59 Mirnesha Studio
- 60 Mirnesha Studio
- 61 Mirnesha Studio
- 62 Mirnesha Studio
- 63 Mirnesha Studio
- 64 Mirnesha Studio
- 65 Mirnesha Studio
- 66 Mirnesha Studio
- 67 Mirnesha Studio
- 68 Mirnesha Studio
- 69 Mirnesha Studio
- 70 Mirnesha Studio
- 71 Mirnesha Studio
- 72 Mirnesha Studio
- 73 Mirnesha Studio
- 74 Mirnesha Studio
- 75 Mirnesha Studio
- 76 Mirnesha Studio
- 77 Mirnesha Studio
- 78 Mirnesha Studio
- 79 Mirnesha Studio
- 80 Mirnesha Studio
- 81 Mirnesha Studio
- 82 Mirnesha Studio
- 83 Mirnesha Studio
- 84 Mirnesha Studio
- 85 Mirnesha Studio
- 86 Mirnesha Studio
- 87 Mirnesha Studio
- 88 Mirnesha Studio
- 89 Mirnesha Studio
- 90 Mirnesha Studio
- 91 Mirnesha Studio
- 92 Mirnesha Studio
- 93 Mirnesha Studio
- 94 Mirnesha Studio
- 95 Mirnesha Studio
- 96 Mirnesha Studio
- 97 Mirnesha Studio
- 98 Mirnesha Studio
- 99 Mirnesha Studio
- 100 Mirnesha Studio

SECTION THROUGH COURTYARD (0:100)
TELLING THE STORY OF JOURNEY THROUGH COUNTRY



JAI DYN BOYCE

Architecture
UNDERGRADUATE

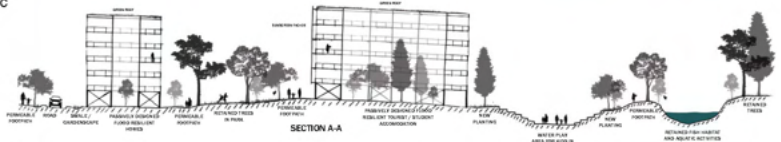
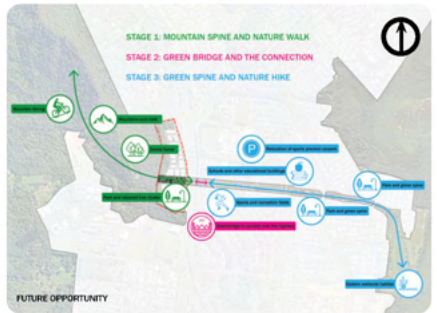


UDAD 7006

CAIRNS STRATEGIC FRAMEWORK

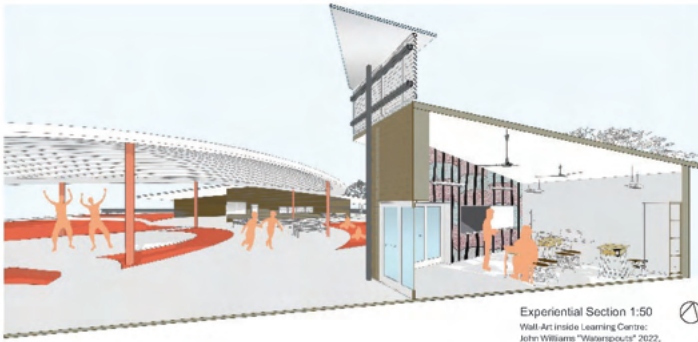
This project looks at developing the vacant block to accommodate a medium density residential zone to reduce the single dwelling urban sprawl whilst also opening a new revenue stream for James Cook University & planning around key sustainability drivers.

The project is sited in Cairns on a block of land just north of the JCU Campus in Smithfield. The three key sustainability drivers for the project were, **Tropical Living, Biodiversity & Tourism**. For each topic, an investigation was held to analyse the issues and advantages of each. Research was conducted on each topic to find mitigation strategies. The project lays out the foundation for future opportunities for the city of Cairns to promote its' key drivers for economic growth.



SAM BROWN

Architecture
MASTER



Experiential Section 1:50
Wall Art inside Learning Centre
John Williams "Waterpout" 2022.



Air-Strip Lookout Perspective



Precedent of slab etching

ARCH3100

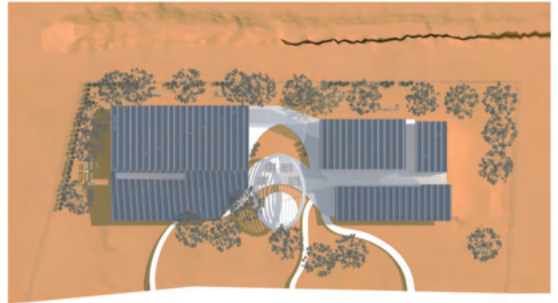
LAND TO SEA

The concept for this design is connection to land and sea. The primary element for this connection is through the artists' art. The exterior slab is etched with art and patterns that connects them to land, and the interior walls are painted by the artists for authentic Morington Island art to connect them to sea.

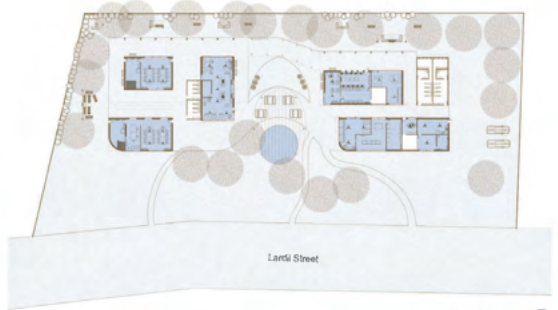
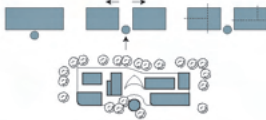
The site contains several social areas, both indoor and outdoor, public and non-public, having different options aiming to make the site a comfortable and positive place, regardless of weather and comfort levels.

As the weather conditions are quite harsh, elements such as wind and sun have been heavily focused on in this design. Large roof and long eaves for adequate shading, and louvers and manual windows ensure adequate ventilation. These building elements are designed differently throughout the structure depending on sun and Winter/Summer wind exposure.

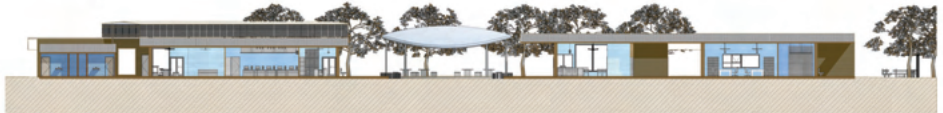
An important part of maintaining connection to land and sea is through passing down knowledge. Due to this, the Learning Centre is a significant space in this design. It is located next to the site's centre where cultural events would find place, such as dancing and wood fires. Being next to the site's centre extends the learning space from a single room to the whole site, increasing the site's potential and impact in staying connected to land and sea.



Site Plan 1:500



Floor Plan 1:500



Section towards Lardri Street 1:300



Elevation towards Lardri Street 1:300



ANDREA BYRGIN

Architecture
UNDERGRADUATE



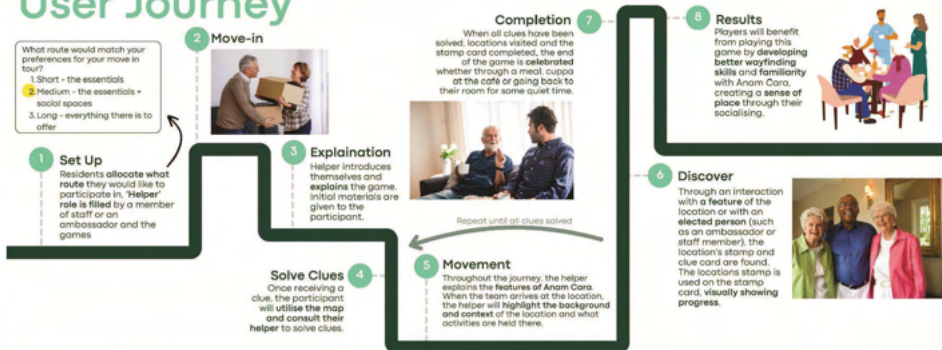
DiscoveryDash

Problem Statement

Wayfinding, the process of orientation and navigation, was found to be a prominent issue during the initial move-in and the following weeks for new residents at Anam Cara. **DiscoveryDash** is a scavenger hunt-style game that helps new residents create familiarity with navigation through fun and effective gameplay.



User Journey



Implemented Feedback

- Integrating family members into the team to create familiarity and confidence in Anam Cara
- Volunteering to be the Helper for all three types of routes is part of becoming a residential ambassador

Future Recommendation

- Becoming part of the fitness initiative for Anam Cara
- pitching to families as an initiation activity that they are welcome to join
- Develop a box for the materials where different routes materials can be clearly seen



Routes Options

Short	Long	Medium
7 Locations	15 Locations	10 Locations



Impacts of Playing

- Develop wayfinding skills
- Build a sense of place
- Creating familiarity with the spaces
- Increasing independence and mobility
- Creating a sense of fun and playfulness
- Initiate social connections by building a network of familiar faces

DSGN3100

DISCOVERYDASH

CHARLI CAMERON

Design

UNDERGRADUATE

Environmental Design Student at UQ | President UQ Design Society | ...



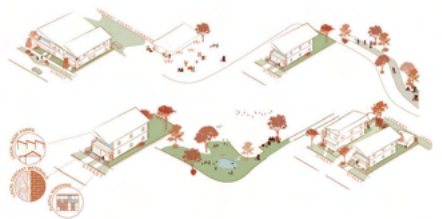
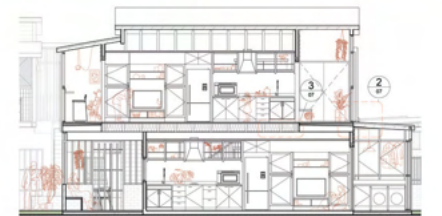


ARCH7004

GENTLE DENSITY FOR THE MISSING MIDDLE: BANYO COMMONS

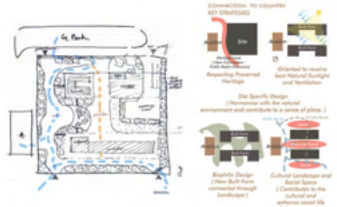
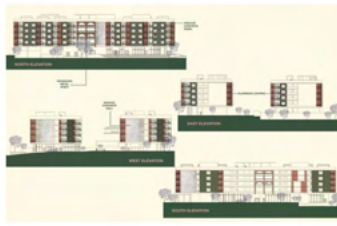
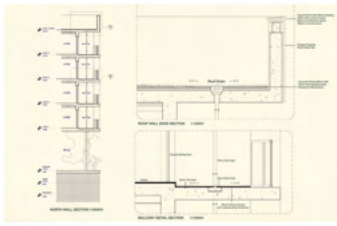
The proposal introduces the concept of gentle density through a co-housing proposal for **Housing Older Women (HOW)** in the middle ring suburb of Banyo, through the repurposing of a land parcel previously used as an industrial site. The proposal suggests how the site can be stitched into the local context and utilised as a means of creating a vibrant and diverse neighbourhood.

The site is located along Blinzinger Road and Wellington Street, with surrounding residential dwellings and nearby connections to the town centre, train stations and Downfall Creek. The proposal aims to provide affordable housing and increase density whilst considering the existing context and without compromising safety, experience and quality. This proposal is intended to become a strategy and learning experience that can be applied to other suburbs with the hope of alleviating some pressure on the urgent housing crisis.



GABRIELLE CHEUNG

**Architecture
MASTER**



ARCH7043

AVALON AFFORDABLE HOUSING APARTMENT, ST. LUCIA.

The Avalon Affordable Housing Apartment is a thoughtfully designed residential development that embraces the principles of "designing on Country," honoring First Nations culture and welcoming residents from diverse backgrounds. This project is a response to the need for affordable, inclusive housing that supports community wellbeing and connection.

Key design elements include ample natural light, cross-ventilation, and thoughtfully varied levels of privacy, all contributing to residents' comfort and personal wellbeing.

About me :

I have a passion for design, especially in residential, mixed-use, commercial, and hospitality projects. I love researching, designing, and creating spaces that are not only visually striking but also functional and sustainable.



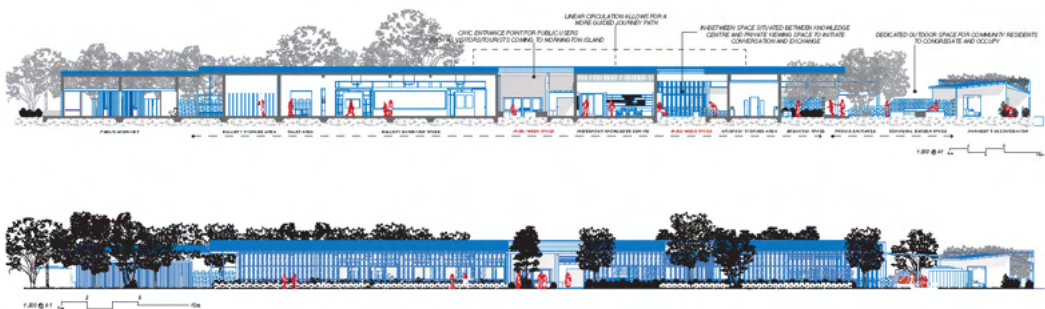
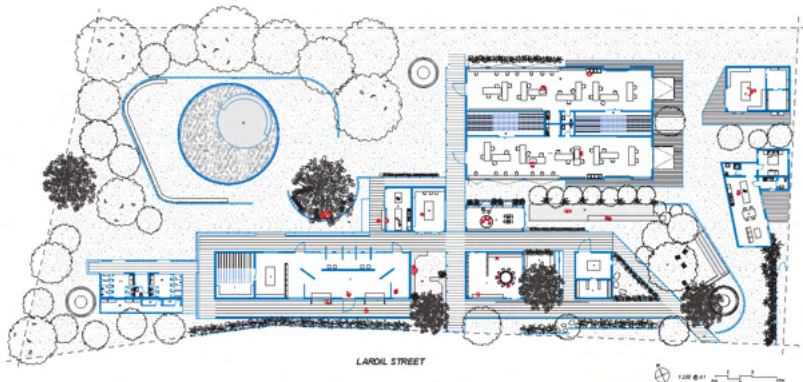
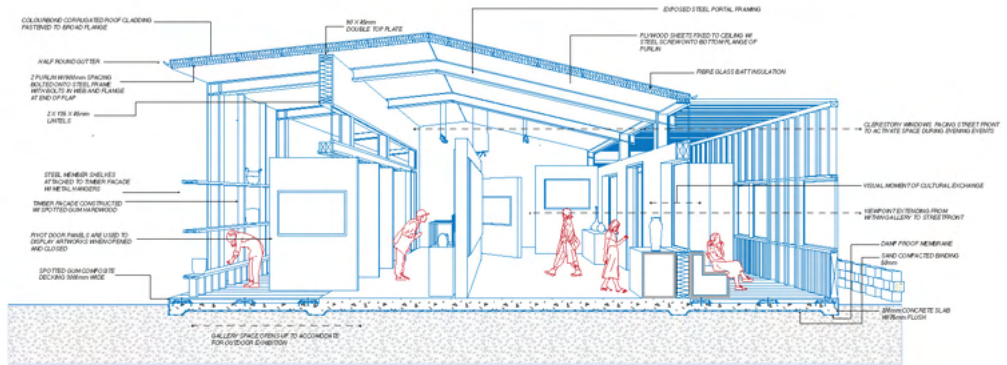
CRYSTAL CHIA

Architecture
MASTER

MORNINGTON ISLAND ART CENTRE: MIRNDIYAN GUNUNA

My name is Nicole Chu and I am an undergraduate student in architecture with a strong passion for designing with empathy and sophistication to create meaningful spaces for people. This design proposal for a new art centre located on Mornington Island for the Gununa community

aims to encourage moments of interaction through the development of third spaces, where the client's and community users can engage in conversation and exchange of knowledge, along with curated 'journey paths' that each user may take to cater to the full range of user experiences.



MIRNDIYAN GUNUNA ART CENTRE, MORNINGTON ISLAND

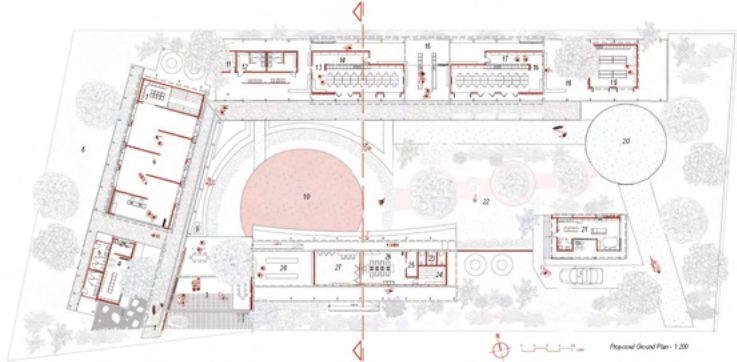
This proposal for the new Mirndiyana Gununa Art Centre is centered around establishing a place with purpose within the Mornington Island community. The project aims to re-spect the surrounding community and give them a space where their traditional cultural practices can continue to thrive and prosper. Due to the sites exposed position, a strong boundary was established along the southern boundary ensuring a safe space is established within the complex. The spatial arrangement allows for public social interaction within the art museum and cultural learning centre, while allowing the artists to work uninterrupted along the north boundary while recognising the cultural norm of a men and womens work space.

The site also features heavy landscaping particularly at centre o establish a nature walk of natural flora which in turn creates shading and coverage for the existing exposed site.

The concept also features heavy brickwork which aims to create connection to the surrounding red soil of the island. Featuring extensive framing to be able to position the brickwork, the terracotta colouring and raised brick tower present civic qualities and act as a point of interest for both the local and visiting population.

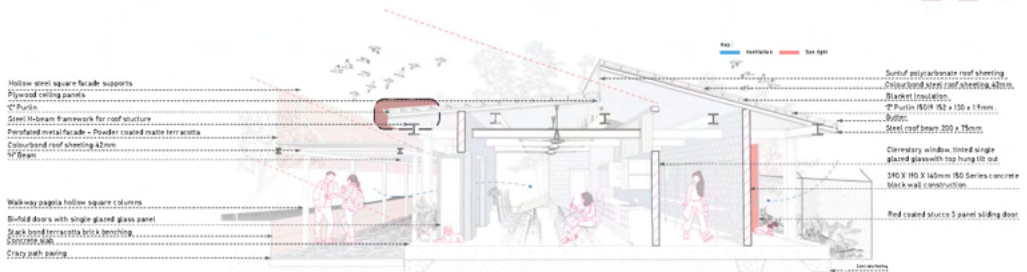
KEY

- 1 - Entrance pathway
- 2 - Reflecting Pond
- 3 - Courtyard
- 4 - Store front and Canteen
- 5 - Gallery toilet block
- 6 - Gallery
- 7 - Gallery storage
- 8 - Gallery breakfast grass
- 9 - Clock tower
- 10 - Amphitheatre and dance space
- 11 - Storage and pump room
- 12 - Change rooms and toilets
- 13 - Womens studio
- 14 - Female studio storage
- 15 - Kitchentide and breakfast space
- 16 - Male studio
- 17 - Male studio storage
- 18 - Breakout space
- 19 - Workshop
- 20 - Driveway
- 21 - Accomodation
- 22 - Fungit and nature walk
- 23 - Toilets
- 24 - Knowledge centre storage
- 25 - Discoveel viewing
- 26 - Knowledge centre
- 27 - Learning centre
- 28 - Public waiting space



Gallery gift shop and canteen | Outdoor courtyard | Female studio | Learning and education centre | Male studio and workers space | Accomodation

E01 - Lardil Street Elevation
1:200



D502 - Female studio perspective section 1:20



Front entrance seating area - Lardil Street



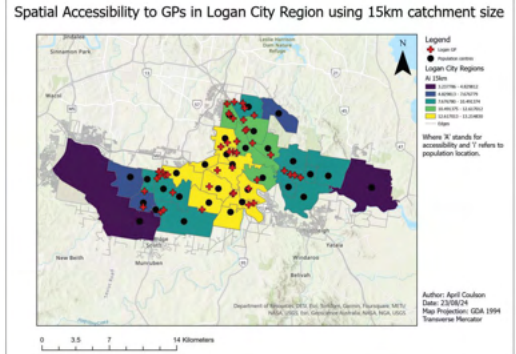
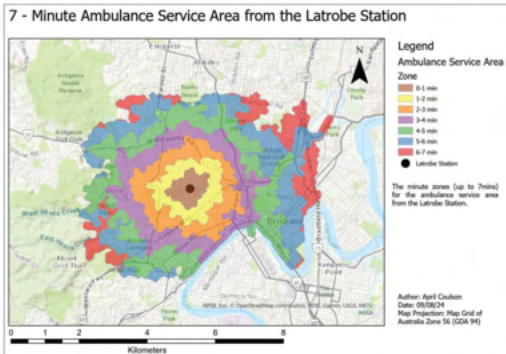
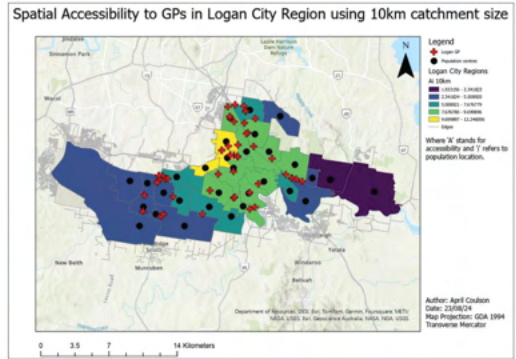
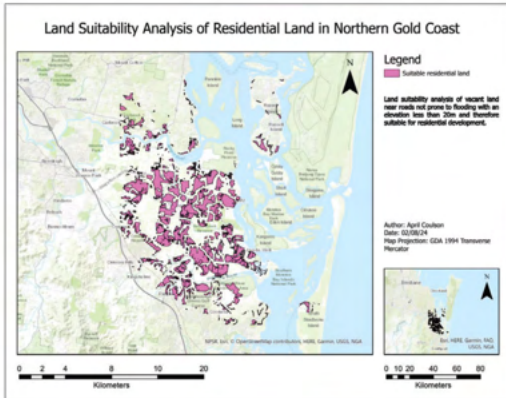
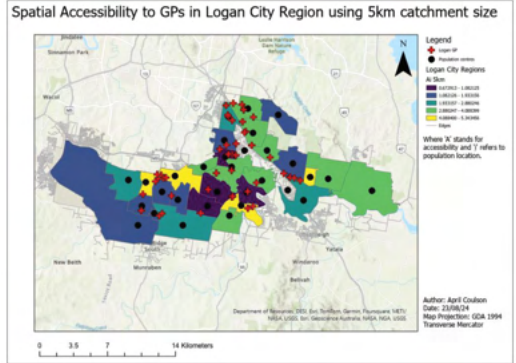
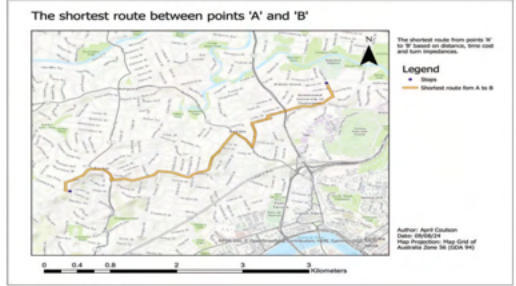
Courtyard with central dance and meeting space

MY JOURNEY WITH GEOGRAPHICAL INFORMATION SYSTEMS (GIS)

I am a fourth-year planning student, and this poster highlights key maps produced as part of practicals in my Spatial Analysis & Modelling course this semester. This course used advanced geographic information systems (GIS) processes and analysis. In these projects, I used ModelBuilder in ArcGIS Pro, a visual tool for automating GIS workflows by connecting and sequencing tools in a flowchart-like model. With ModelBuilder, I conducted a land suitability analysis for residential development in Northern Gold Coast.

I used network analysis to create a seven-minute ambulance service area and to determine the shortest route from points 'A' to 'B'. Network analysis in GIS enables efficient route planning, service area creation, and accessibility studies by incorporating distances, travel times, turns, and other constraints.

Lastly, I applied the two-step floating catchment area method (2SFCA) to examine spatial accessibility to GPs in the Logan City region, using 5km, 10km, and 15km catchment area sizes.



APRIL COULSON

Planning UNDERGRADUATE



Ground Floor Plan, 1:200 Scale



NATURE'S EMBRACE

This project was an extension and retrofit of the existing Central Library on the University of Queensland St Lucia Campus.

The principle focus of this design is embracing the tropical climate of Queensland and the native Nature of Brisbane.

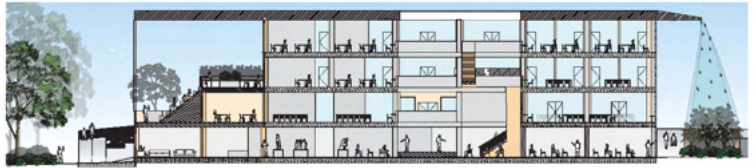
This has benefits for the key stakeholders chosen, including the Indigenous people, and the environment, as well as increasing its sustainability and future adaptability.

The extension has only two floors to minimize construction, and the remaining space is dedicated to outdoor spaces, embracing nature. The other principle design feature is increasing natural light inside. This has been done by having a skylight in the centre stair well and increasing glass on the Eastern and South Facades.

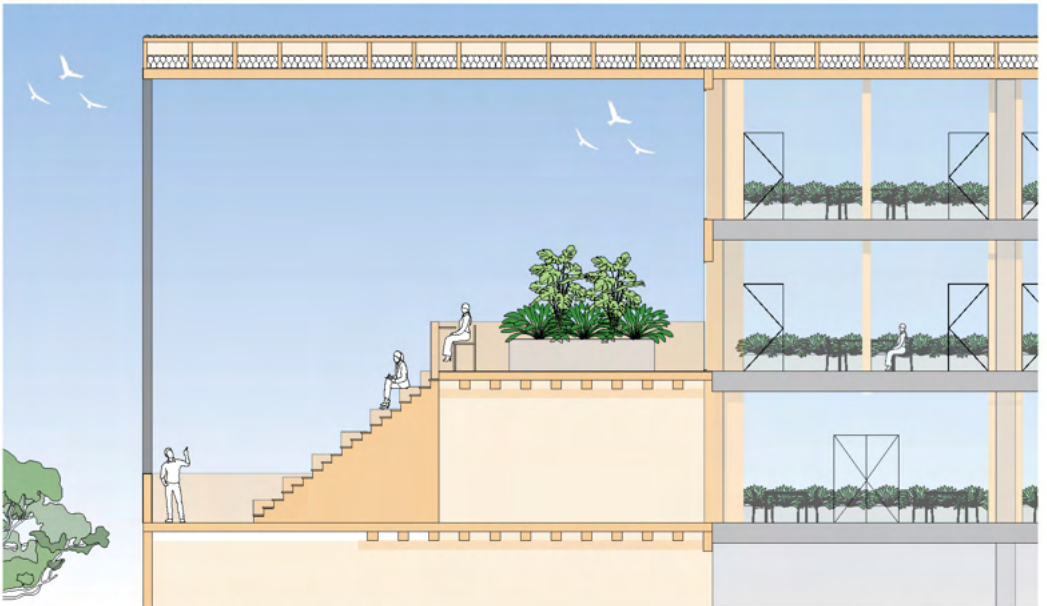
NATIVE INDIGENOUS GARDENS



EAST TO WEST SECTION, 1:200 SCALE



EAST TO WEST SECTION, 1:50 SCALE



KATE EMILY DANN

Architecture
UNDERGRADUATE



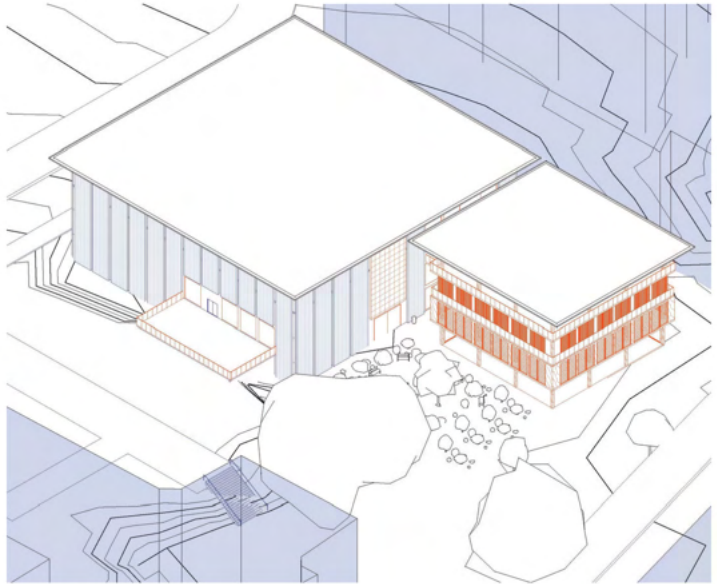
View from Courtyard



View from Annex Level 3



View from Annex Level 3 Balcony



Axonometric from East

ARCH3200

CENTRAL ANNEX

The Central Annex seeks to prove the capabilities of modern infrastructure and industry. Maintaining the original Robin Gibson design, the Central Annex seeks to improve and contribute to, rather than to redo. Most importantly, it strives to produce an accessible outcome with an efficient cost.

The Central Annex leans into its place in a university, striving to be a world leader in sustainability and new technology. The impact infrastructure with these characteristics shows that it can be done throughout Queensland, leaning on good design and sustainable materials.

This project is formed from three key principles: Cost Efficiency, Cultural Heritage, and Community.

More for less, for longer, is the intention behind the Central Annex. Introducing spaces that can be easily repurposed, and reusing what is already available. This is not only cost effective, but sustainable.

Leaning into the cultural heritage of the space encourages visitors to embrace the brutalism of the original design, linked so heavily to the Brisbane Cultural Precinct, and is juxtaposed with the timber of the Annex, referencing the beloved Queensland house. The sense of familiarity draws visitors in, and turns this library into a beacon when used to its full potential.

The Central Annex project recognises a university's duty to contribute to progress and innovation, and to provide spaces for its community. By providing an effective space and extending it into the greater Brisbane community, as most of the Saint Lucia campus has already done, the Central Annex demonstrates to external organisations the ease, effectiveness and benefits of contributing in this way.

Hence, the Central Annex fulfills the university's role as a world leader, demonstrating the pathway to a more cost effective and sustainable future.



Southern Elevation @ 1 300



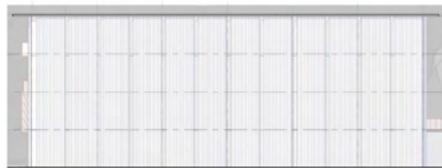
West-East Section @ 1 300



Eastern Elevation @ 1 200



Eastern Elevation @ 1 200



Western Elevation @ 1 200

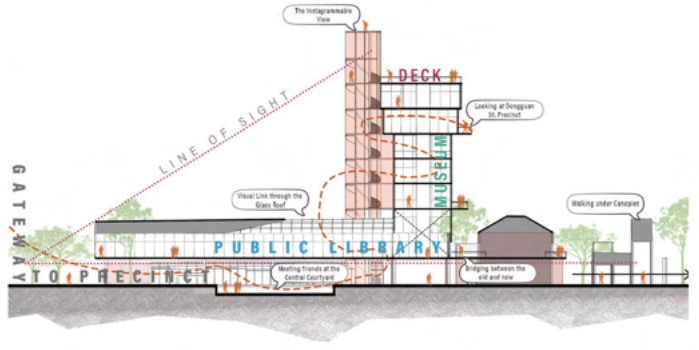
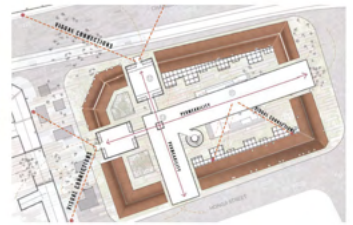


Western Elevation @ 1 200



HANNAH DAVIES

Architecture
UNDERGRADUATE



ARCH7007 / UDAD7004

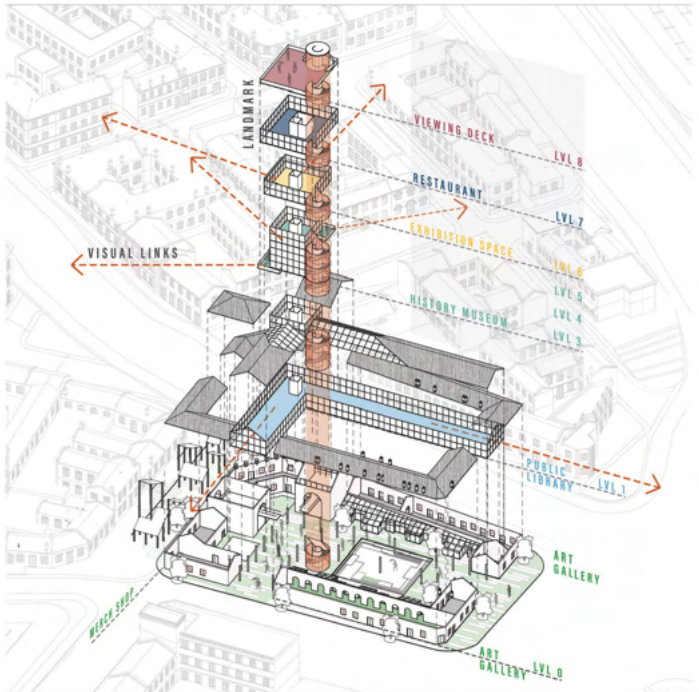
BRICOLAGE

A Dialogue between the Preserved,
Regenerated and Extended
Location: Dalian, China

The project is located in the Dongguan Street Precinct of Dalian which is layered with cultural influences from Russia, Japan and Europe, superimposed on the Chinese history, creating a unique urban landscape. The architectural intent of the project is to adapt and reuse the heritage building stock while providing extended built space to create a new typology of public space woven in the history. The tower acts as a physical and notional landmark, that anchors the precinct in the public realm of Dalian. The buildings are associated with public Educational functions such as Art Galleries, Libraries and History Museums that reiterate the idea of the site being the first point of experience in the precinct.

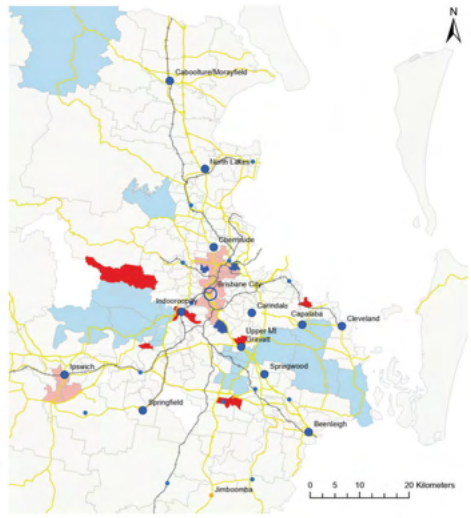
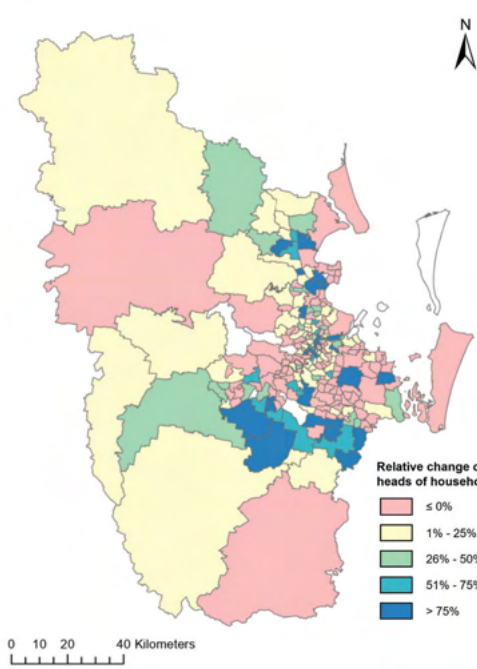
About me

I am a bold strategic thinker with a passion for cities and architecture. Essentially a problem solver, I tend to delve into the finest details of designs. A conversationalist at heart, meeting new people, and working with teams has always been my forte. Apart from that, I am fond of reading, writing poetry, travelling and creating art.



Ayushi Desai

Architecture
MASTER



Relative change of young heads of households

- ≤ 0%
- 1% - 25%
- 26% - 50%
- 51% - 75%
- > 75%

Clusters of young-headed households in 2021 (Anselin Local Moran's I)

- High-High cluster
- High-Low outlier
- Low-High outlier
- Low-Low cluster
- Not significant

Activity centres

- Capital city centre
- Principal centre
- Major centre
- Major rural centre

PLAN4008

THESIS

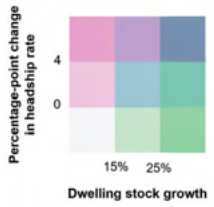
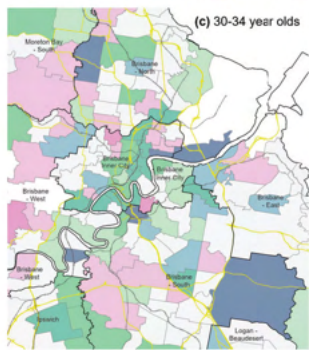
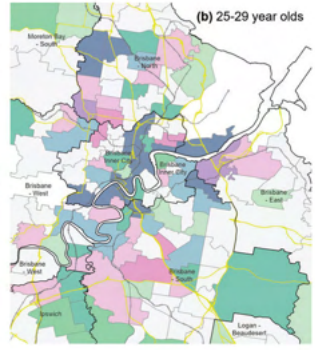
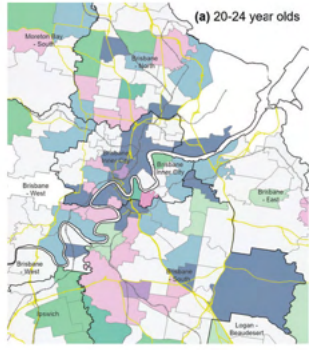
My honours thesis titled "A metropolitan geography of young heads of households: the case of Greater Brisbane" explores the trends and patterns of households led by young adults (aged 20-35 years) in a major Australian metropolitan region between 2011 and 2021. Young adults often face the brunt of housing crises as relatively lower earners challenged by tight housing markets and rising costs. These challenges are resulting in unique spatial processes tied to the housing choices of young adults.

I build upon existing international research on these processes, such as *youthification* and *studentification*, finding that Greater Brisbane shares many of the same trends and challenges for young adults as other large cities. Namely, young adults are continuously excluded from established middle-ring suburbs, this is displacing people from their established communities and networks as they are pushed into the under-serviced urban fringe.

I also link many of Greater Brisbane's trends to policies, schemes and initiatives of the planning and housing systems. Australia's ownership-based, overly-financialised housing system inherently disadvantages young adults who are often less wealthy, earning less, and disproportionately live in rental housing.

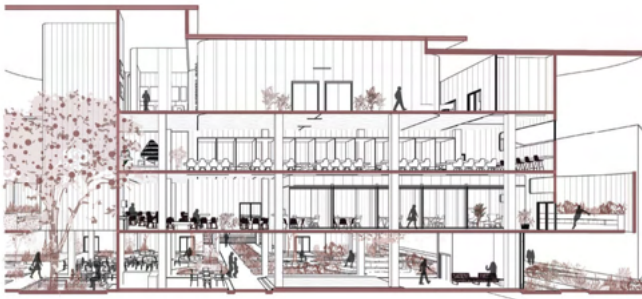
My project provides the first empirical account of the spatial distribution, characteristics and shifts in young-headed households in an Australian city. I am thrilled to be contributing to a growing international field of research and providing a critical Australian perspective. My findings are also a valuable contribution for policymakers and decisionmakers, highlighting the housing needs and preferences of young adults, and the failings of our current systems in meeting them.

This project not only represents a significant milestone in my academic career but also enriched my long-held love for places and communities. Having moved around frequently while growing up and living in wildly different places, from a remote township to a megacity, my love for geography (and travel) started young. I am excited to bring the knowledge, learnings and experiences from my studies to this next chapter of life as a planner.

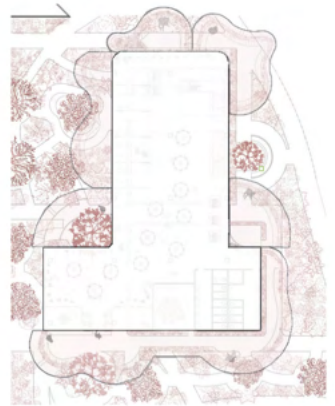


SOPHIA DOW

Planning
UNDERGRADUATE



PERSPECTIVE SECTION - SPATIALITY



MODULAR FRAMEWORK - CONTEXT & COUNTRY



INTERIOR VIGNETTE - HUMAN-CENTERED DESIGN



EXTERIOR VIGNETTES - PERMEABILITY



AXONOMETRIC - ORGANIC FORM

ARCH3200

TULLEI NGUMBIN

"TULLEI NGUMBIN," meaning "tree house" in the Yugambeh language of the First Nations peoples of South East Queensland, represents a harmonious blend of nature and architecture. The design draws inspiration from the surrounding landscape and Indigenous cultural principles, creating a structure that promotes sustainability, connection to Country, and flexibility. By integrating modular timber elements, including the extensive use of Glulam timber, the project emphasises adaptability and a deep respect for the environment. "TULLEI NGUMBIN" acknowledges the past and chooses to look toward the future, encouraging a sustainable and inclusive space for all.

ABOUT ME

My name is Leyna and I am an architecture undergraduate. My passion for architecture was ignited through my travels at a young age, exposing me to diverse architectural styles and cultural contexts. I am particularly interested in sustainable design and contemporary architectural solutions. These experiences and interests have shaped my unique style, which I hope to reflect in this project.



EAST ELEVATION - VERTICAL EXPRESSION

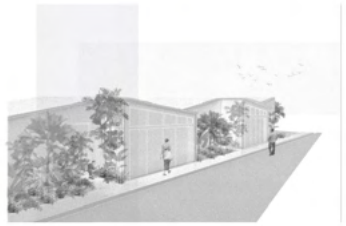


GROUND FLOOR PLAN - BRIDGING SPACES THROUGH NATURE



LEYNA FASSI

Architecture
UNDERGRADUATE



LEGEND

—	—
—	—
—	—
—	—
—	—
—	—



GROUND FLOOR PLAN



SITE AXONOMETRIC



PERSPECTIVE SECTION THROUGH COMMON HOUSE

ARCH2200

DARRA CO-HOUSING PROPOSAL: CANOPY

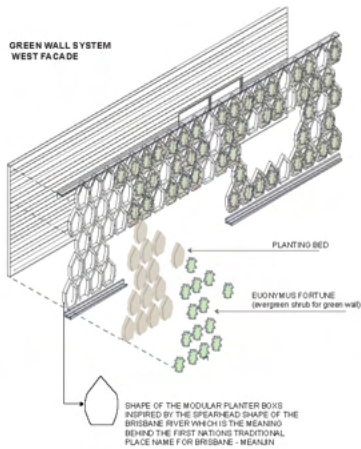
As part of the Deicke Richard's 'Sharing with Friends' initiative, this co-housing solution offers affordable housing for the elderly which fosters friendships and support networks. In response to the suburbs industrial typology and the brief requirements for communal living, the design carefully integrates green spaces, creating a gradient, meticulously shifting from public to private without the restrictive means of physical barriers. A key driver to the sites program was the need to provide a range of spaces that allow for both interaction and isolation, balancing the needs of the individual and the community within the co-housing typology. Through a diverse, yet economically viable material palette, the proposition reflects a compelling standard for what co-housing can represent.



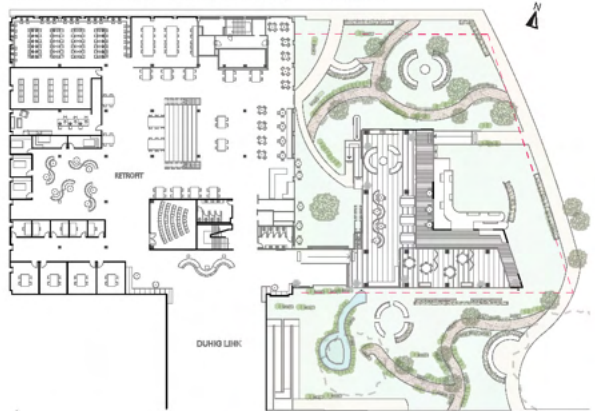
FIONA FLANAGAN

Architecture
UNDERGRADUATE

GREEN WALL SYSTEM
WEST FACADE



LEVEL 1 FLOOR PLAN - CENTRAL LIBRARY + EXTENSION



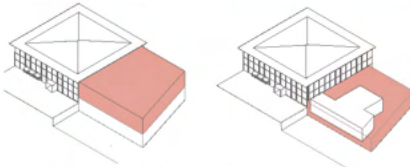
ARCH3200

UQ CENTRAL LIBRARY EXTENSION + RETROFIT

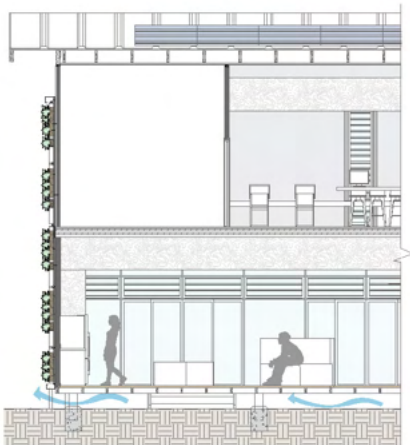
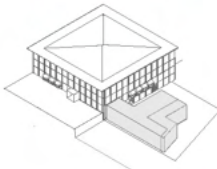
Hi, my name is Harini Fonseka. I am passionate about creating human-centred and sustainable architecture that not only has a key influence on the built environment, but also the community that it serves, to act as future precedents to tackle the biggest problems affecting the world, whether that be social, economic, or environmental. My project is a retrofit and extension to the University of Queensland's (UQ) Central Library, located at the St Lucia Campus (Meanjin). My chosen stakeholders are primarily First Nations staff and students at UQ, but also First Nations visitors/ guest (elders) to UQ, as well as the broader UQ and public community. A key strategy to my project was analysing the UQ 2022 Campuses on Countries Design Framework to assist in creating a culturally safe space for First Nations staff and students to gather and share stories, advice, and knowledge, as well as a place that celebrates the excellence and achievements of UQ's First Nations community. The design blurs inside and outside, creating a harmonious design unobtrusive to its site, to assist in caring for Country.

LIMITING VERTICALITY
- GROUNDED TO COUNTRY

COMPACT - CREATING MORE OUTDOOR SPACE UNOBTUSIVE ON SITE



RESULTING FORM

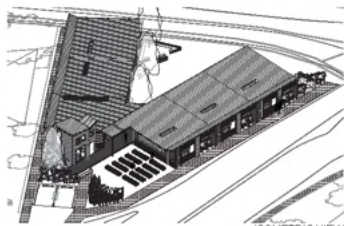


HARINI FONSEKA

Architecture
UNDERGRADUATE



NORTH-EAST ELEVATION



ISOMETRIC VIEW



INTERNAL EXPERIENTIAL VIEW



CENTRAL EXPERIENTIAL VIEW

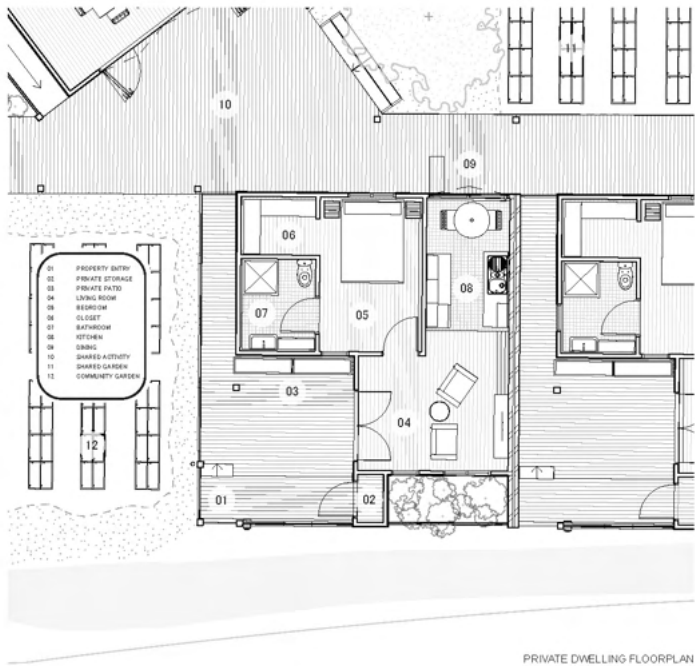
ARCH2200

DARRA COHOUSING

The "Sharing with Friends" cohousing project explores the idea of affordable and secure housing for older women, aiming to foster a supportive environment for genuine connections and community support to thrive. This initiative emphasises the concept of living with the community rather than beside them, generating a hub of culture, art and friendship.

This design approach focuses on resolving key challenges regarding spatial organisation about an irregular and confined site boundary, material efficiency and community interaction. These homes were inspired by Darra's vernacular architecture, acting as a harmonious extension of the town. Raising the floors allowed for the site to naturally divide into public and private territories, providing opportunity for seclusion or inclusion from centralised activities through to the private suites.

These homes fostered my interest in residential architecture by showing how design can transform constraints into opportunities. It showcased how functional spaces can be cultivated and enhance the quality of life for its residents through exploring the balance of community cohesion with individual privacy and how it can positively impact people's well-being.



PRIVATE DWELLING FLOORPLAN

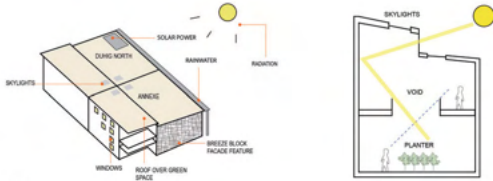
AYSHA FRANKLIN

Architecture
UNDERGRADUATE

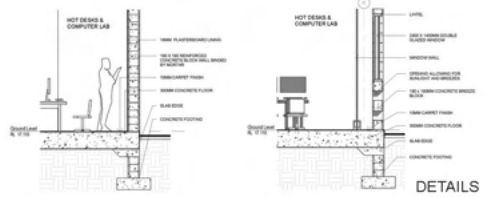
ILLUMINATE TOGETHER: A MODERN LIBRARY FOR ALL

My name is Isabelle Furrows, I am a 3rd year UQ Architecture student eager to gain hands-on, industry related experience. I have just completed my UQ Bachelors of Architectural Design and will shortly start a Masters. While studying at the University of Queensland, I have used and developed proficiency with multiple types of software, including Revit, Rhino 3D and the Adobe Creative Cloud Suite (Illustrator, Photoshop and InDesign).

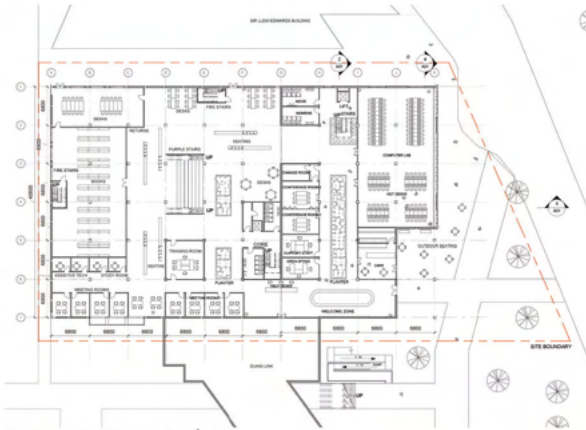
The aim of this project was to retrofit and extend the existing Central Library located on UQ St Lucia Campus. My project contained 3 main concepts. The design prioritised open and flexible spaces as well as modern technology to create more functionality. My extended library remained a single larger structure, to encourage collaboration and unity. I optimised daylighting by use of voids and skylights along with planters around the building to promote engagement.



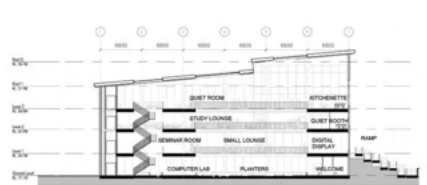
CONCEPT DIAGRAMS



DETAILS



GROUND FLOOR PLAN



SECTION



ELEVATION



ISABELLE FURROWS

Architecture
UNDERGRADUATE

MIRNDIYAN GUNUNA

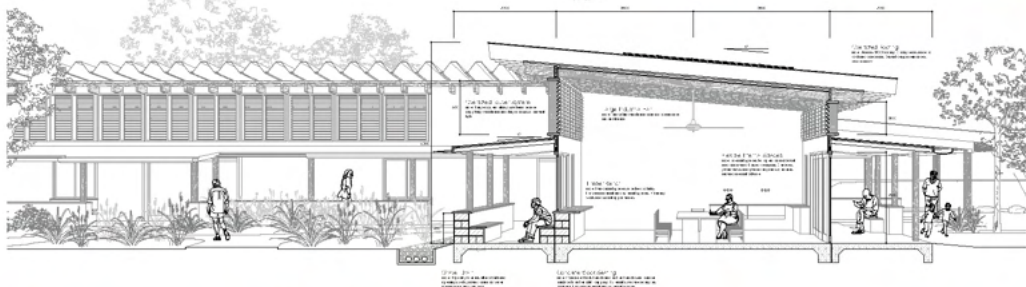
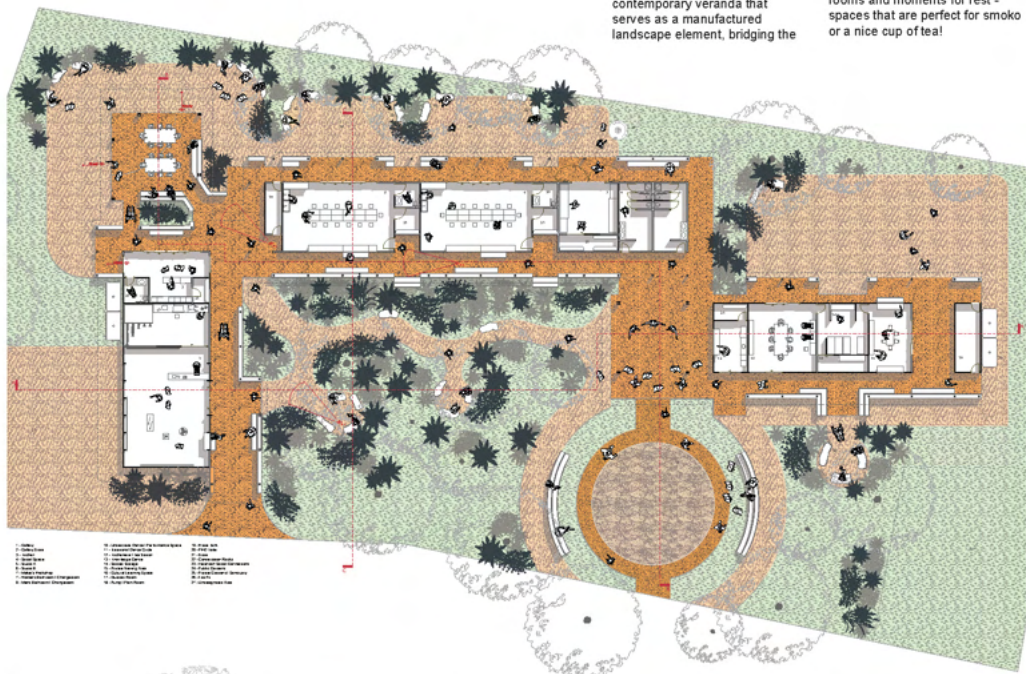
Art Centre on Mornington Island

The goal of this project is to enhance the social connections within the community, creating a place for deep appreciation of culture and country.

The Project centres around the transitional spaces between structure and country. This is done through the use of a contemporary veranda that serves as a manufactured landscape element, bridging the

space between places of work and places of social and public connection.

The enhanced transition creates moments of casual interaction and positive visual connection. The veranda's modulation reinforces visual and physical movement, while creating small outdoor rooms and moments for rest - spaces that are perfect for smoko or a nice cup of tea!



GEORGE HICKMAN

Architecture
UNDERGRADUATE

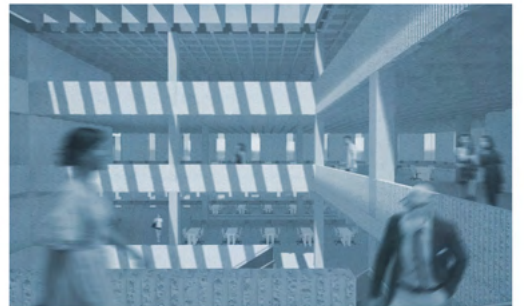
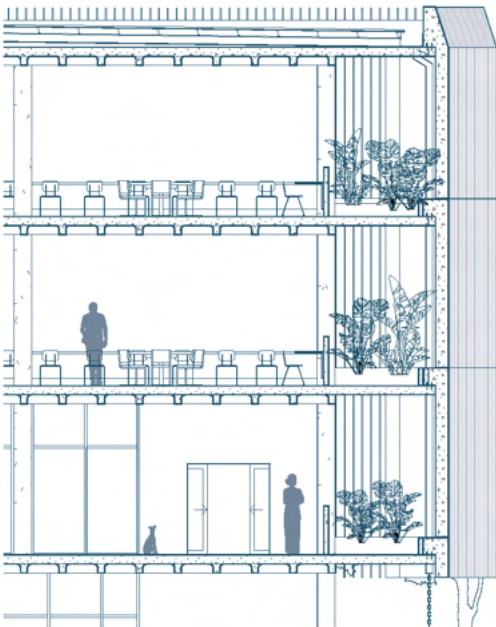
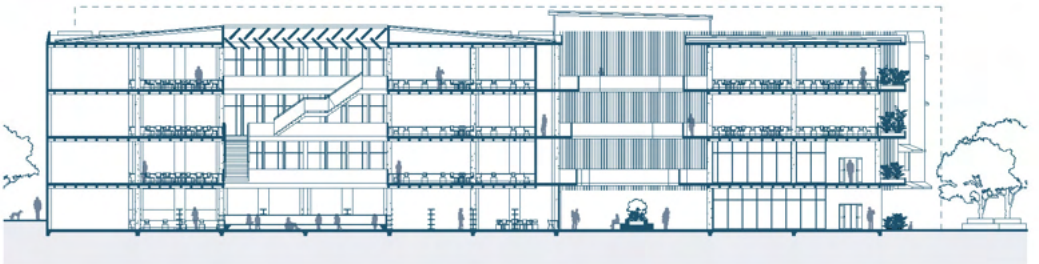
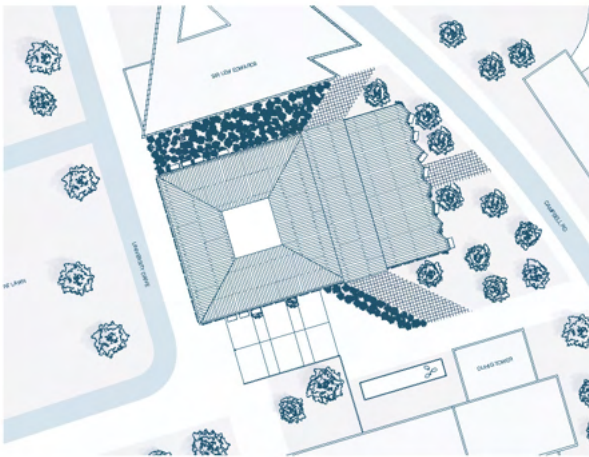
ARCH3200

UQ CENTRAL LIBRARY RETROFIT & EXTENSION

The driving principle behind this design response is to honour Robin Gibson's original vision for the UQ Central Library.

Externally, the east facade (designed to be removable for future extensions) will be brought forward with concrete panels spaced and re-oriented. This spacing will allow more natural light into a new standalone building, keeping the original mostly intact. The extension will include all new functions and technology, allowing the original to be utilised as more intimate and quiet study spaces.

Internally, the original building will be stripped back to its core ideas - open sight lines, visual connection between levels & curated movement. The purple stair, non-original walls & elevator will all be removed. A central void and grand stair within will create visual connection between levels and add a feeling of volume to an otherwise compressed floor height.



GREGORY HOLMES

Architecture
UNDERGRADUATE



WTSC



- Basic Staff Training
- Visible Safety Features
- Information Availability



- Creation of Female Safety-Specific Staff Roles
- Policy Development
- Innovative Safety Features
- Feedback Mechanism
- Community Training Programs
- Advocacy and Outreach



- Advanced Staff Training
- Community Engagement
- Safety Reporting Mechanisms
- Transport Safety

DSGN3200

THE WOMEN'S TRAVEL SAFETY CERTIFICATION (WTSC)

Hi, I'm Josephine Horan, and I've recently completed the third year of my Bachelor of Design and Business Management degree. I'm driven by the challenge of tackling complex problems that others often deem insurmountable. This passion led me to develop a project focused on addressing the urgent issue of gender-based violence faced by women while travelling abroad.

During initial research, I discovered that while female travel rises, gender-based violence continues to be a risk at every stage of travel, in every country. This highlights the urgent need for solutions that not only provide essential knowledge but also empower women and ensure their protection.

To address this, I created the Women's Travel Safety Certification (WTSC), a program with four key components. Firstly, the accreditation includes three tiers, awarded to travel-related companies committed to enhancing female safety. This certification is supported by a website that empowers women through events, blog posts, and a forum to share experiences. A key feature is an interactive map where women can mark safe or unsafe locations, offering valuable insights to other travellers. The WTSC also includes a mobile app with similar features, plus an emergency function that allows users to alert local law enforcement by dropping a pin in case of danger.

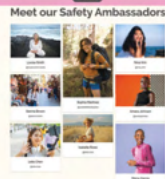
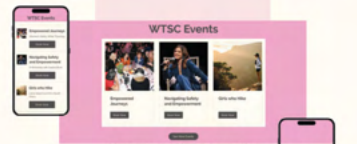
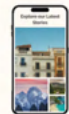
Developing the WTSC was more than just a project, it was a step toward empowering women to travel with confidence, by providing essential knowledge, resources, and tools to navigate risks. This initiative transforms the travel experience, ensuring women feel supported and safe, enabling them to explore the world, embrace their individuality, and return home safely.



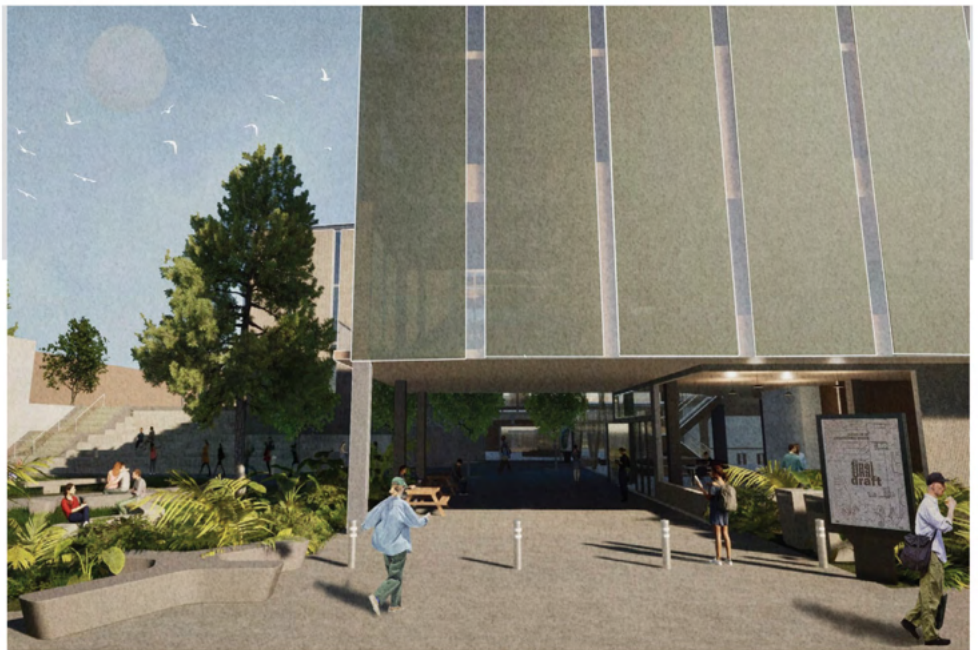
JOSEPHINE HORAN



Scan to view the full WTSC website



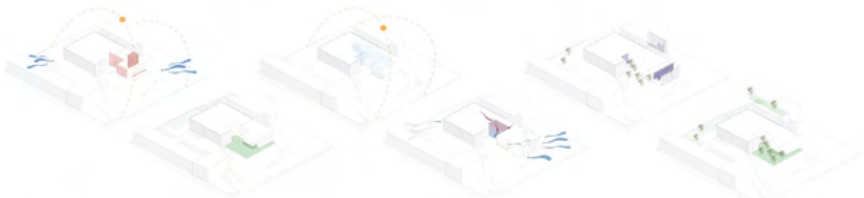
Design
UNDERGRADUATE



ARCH3200

THE DUHIG REVITALISATION

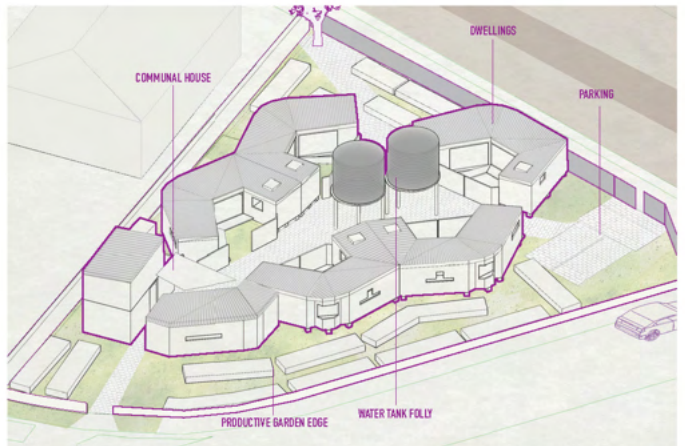
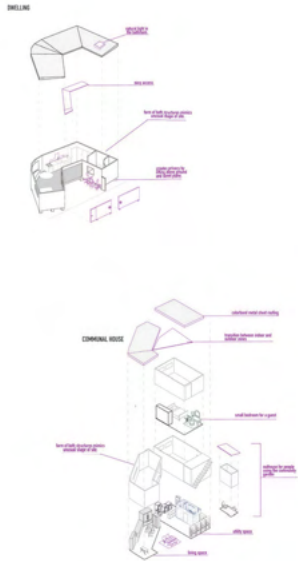
The proposed Extension and Retrofit of UQ's Central Library reinstates priority of the student experience through a design that centers on both belonging, community impact and sustainable innovation. Sensitive to the iconic brutalist architecture of the original building, the design harmonises with its bold geometries, creating a respectful dialogue between past and present. This proposal reinforces the library as a welcoming campus hub, fostering connectivity and inclusivity for students and the wider community.



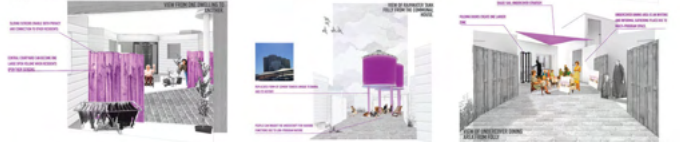
MADISON HUNTER

Architecture
UNDERGRADUATE

COMPOSITION



ADAPTIVE SPACES



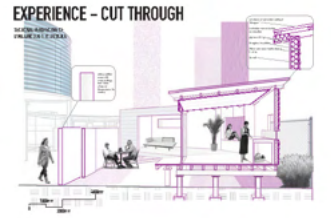
ARCH2200

DARRA CO-HOUSING: CRESCENT CORNER

The brief was to create a five-dwelling co-housing scheme on corner site in Darra for a group of women. Inspired by "Sharing with Friends" by Deicke Richards.

Crescent corner aims to create connective, sustainable and useful spaces through built and natural forms. The goal is to give residents dynamic living experiences which are unique to this site. This was done through sequences of enclosed, semi-enclosed and outdoor spaces intended for seamless transitions from private to shared outdoor space. A community garden presents along the full length of the street edge and activates it to become the productive hub of the area. Despite this, the communal house and dwellings are face inwards, employing the crescent shape to direct attention to the brick-paved courtyard and residents' gardens which are more private.

Materials were chosen according to availability, affordability and/or sustainable sourcing. For example, the timber sliding screens for each dwelling use offcuts from the timber yard nearby. Red brick paving is readily available, replaceable and permeable to the soil. An abundance of native plants constitute the buffer on the peripheries of the built form to not only to maintain a natural privacy screen, but are low maintenance and rehabilitate a space that used to be full of trees.



LUJAIN HUSSAIN

Architecture
UNDERGRADUATE

Gatton Recreational Parks & Urban Context Map



GEOS3400

PLANNING RESEARCH PROJECT

In my last semester of study, I have undertaken an exploratory planning research project. My research project investigates whether a reliance on statutory planning frameworks to address the impacts of growth and development in rural towns is detracting from local government's ability to build community resilience through the provision of greenspace.

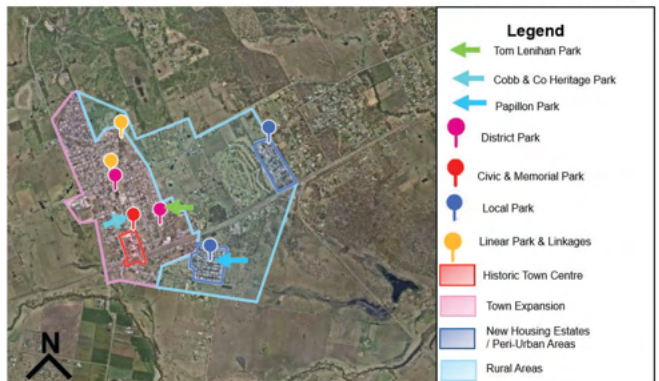
Growing up on the outskirts of Gatton, I have always had a connection to my rural community and a strong interest in the importance of access to greenspaces and community infrastructure in peri-urban and rural areas. As such, my research project applies a literature review, policy scan, case-studies and development of an analytical framework to understand the interaction between statutory planning frameworks, provision of recreation parks and achievement of community resilience goals in two communities in the western corridor of Southeast Queensland: Gatton and Rosewood.

My research project starts to map the influences and limitations of local government's implementation of statutory planning approaches and articulates policy misalignments. The outcome of my research is development of the *Rural Park & Community Resilience Assessment Framework* which provides a comprehensive framework to address strategic policy and local place.

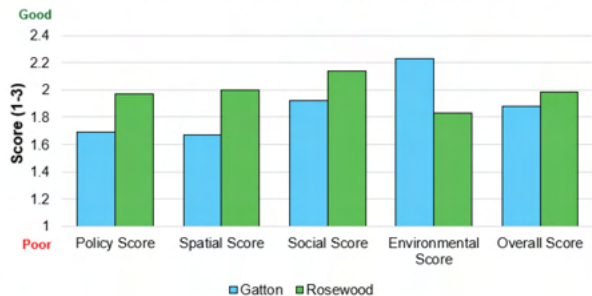
I have found this research project insightful as it has allowed me to connect my childhood in a rural town to my professional practice as a town planner working in development assessment and broader strategic planning matters.



Rosewood Recreational Parks & Urban Context Map

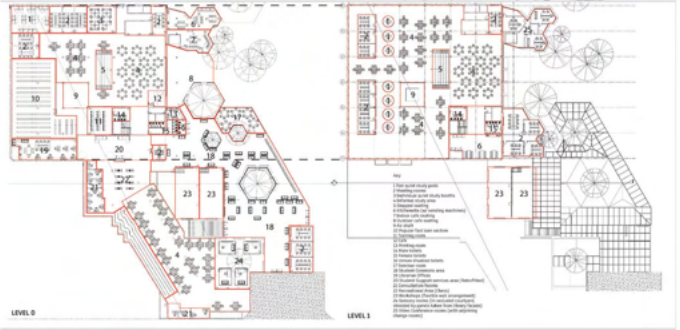
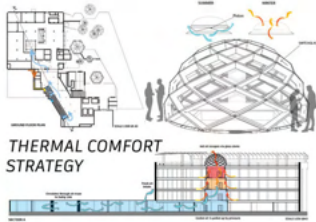
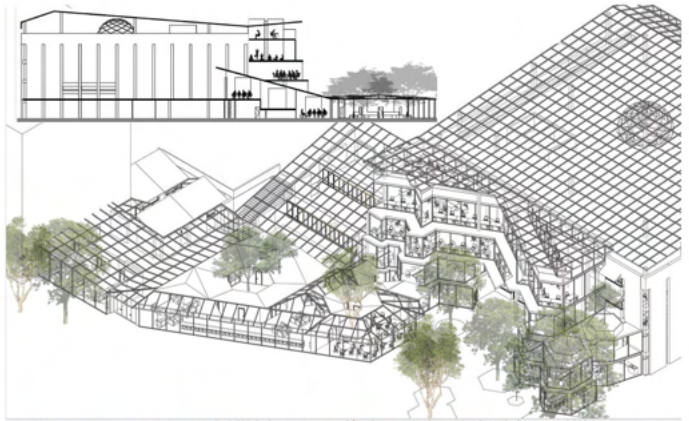


Rural Parks & Community Resilience Assessment Framework Results - Gatton & Rosewood



HOLLY ILKA

Planning
UNDERGRADUATE



ARCH3200

UQ CENTRAL LIBRARY STUDENT COMMONS

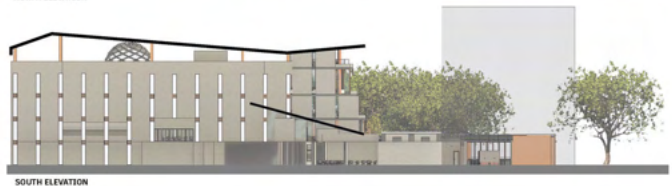
So often trees are seen as an obstruction, a mere speck on a demolition plan.

The UQ Central Library was designed to be isolated from the outside world, to create a completely isolated environment. It has succeeded perfectly; a stuffy and dim building is the result.

Firstly, I carved an atrium up through the building to flood the dim study spaces with light and harness the Venturi effect to create constant and comfortable air movement. Inspired by the Reichstag, a geodesic glass dome sits atop the atrium to adjust the sun's intensity. A hydraulic-operated lid allows for hot air to be vented in summer, and closes to trap warm air in winter. The annex itself wraps around the existing trees at a respectful distance using phi, utilizing dynamic solar glass to allow students to soak up the rich greenery and dappled sunlight. The annex itself takes on a shape akin to European star forts, which were designed to maximise viewing angles and vantages.

The student commons stretches towards the Duhig Tower, to offer a more comfortable alternative to the Duhig Link, which now also hosts a thermal labyrinth.

The rooftop has been restored to a form closer to its original, hosting an event space with multiple water storage ponds that host fish when not in use.



ISAAC JANSSEN-SKRIPIC

Architecture
UNDERGRADUATE

06 Living Greenery

Elevated Gardens

Vegetation on the balconies and rooftops contributes to biodiversity and structural benefits (such as shade) and adds character and aesthetics to the buildings

Internal Planting

Internal planting incorporated within and on the exterior of the building reduces urban air pollution and moderates temperatures



Vertical Greenery

The green wall that is located externally adds living features to the building, improves atmospheric temperature and adds shade

Ground Plane Gardens

The ground gardens features trees at the easily accessible entrance of the building. This results in aesthetic and suboptimal street frontages and the character of West End

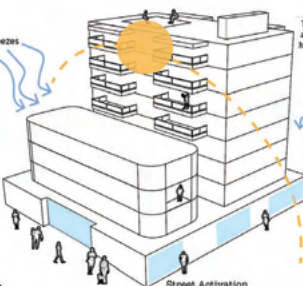
01 Orientate Yourself

Locations and Orientation

The orientation of the building considers breezes, natural features and exposure to sun. The orientation also maintains city views which creates a city that breathes through natural light and air

Massing and Internal Layout

The building shapes to overall massing including the floor plane and internal layout. The orientation of the building informs the choice of building materials, circulation and services.



Views

To views provide both immediate and long term views of vegetation, human activity and distance views of skylines

Winter Breezes

Winter breezes are shown as blue arrows coming from the right side of the building.

Streets Activation

To respond to local conditions, there is a wide open entrance to the public on the footpath, trees on the street and windows scattered around the building

02 Occupy Outdoor Spaces

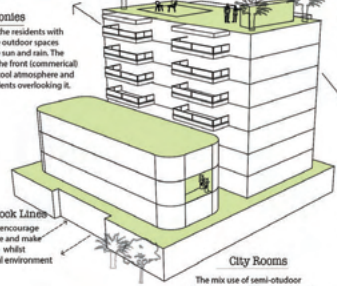
Rooftop Balconies/Sky Terraces

The rooftop area provides a public space for all residents with great views and surroundings of the environment (a shelter is located over the rectangle space - picnic area with bbq)



Balconies

Balconies provide the residents with their own private outdoor spaces, protected from the sun and rain. The vegetation on top of the front (commercial) buildings provides a cool atmosphere and nice view for the residents overlooking it.



Balconies located all around the building on both side

Laneways and Cross-Block Lines

The outdoor pathways encourage interactions with people and make the city permeable whilst being surrounded by natural environment

City Rooms

The mix use of semi-outdoor and indoor spaces in the lower levels create a permeable space for interactions between people and is specifically located along the footpath.

PLAN3001

URBAN DESIGN PORTFOLIO: WEST END

Group Members: Lucinda Johnston, April Coulson, Sophie Finch, (Janice) Hok Yu Fu

For this assignment, my group and I were tasked with creating an urban design portfolio to analyse the current built environment of Roger Street in West End and propose improvements through placemaking and urban design strategies. The excerpts featured in this poster represent only my contributions to the portfolio.

Our analysis revealed that the site is underutilised, with the café being a prime example of this due to insufficient public seating and poor design choices. As a result, Roger Street holds significant potential for redevelopment, enabling it to serve its full capacity. The proposed design envisions a mixed-use space incorporating social, recreational, and public amenities, such as public seating areas and commercial/retail outlets. Key enhancements would include increased greenery to elevate the standard of living, improved pedestrian safety through upgraded footpaths, and the addition of bike paths. This approach aims to create a safe, walkable, and inclusive environment that aligns with the character of West End.

A component of the portfolio also involved designing a dwelling for Roger Street, which I undertook independently using SketchUp. It was crucial that my design adhered to the Brisbane City Council's "Buildings that Breathe" guidelines. The images presented here showcase my design, which prioritises orientation responsiveness, outdoor spaces, and integrated living greenery.



VISION THEMES



One of the themes of the vision is to improve the living greenery on the site. This includes, greenery on the street, between buildings, and near the public spaces.



The second vision theme for the street section is to improve/add bike paths and pedestrian paths to encourage active transport and make the space easily accessible for a diversity of users, whilst improving pedestrian safety. Along with increasing parking availability.

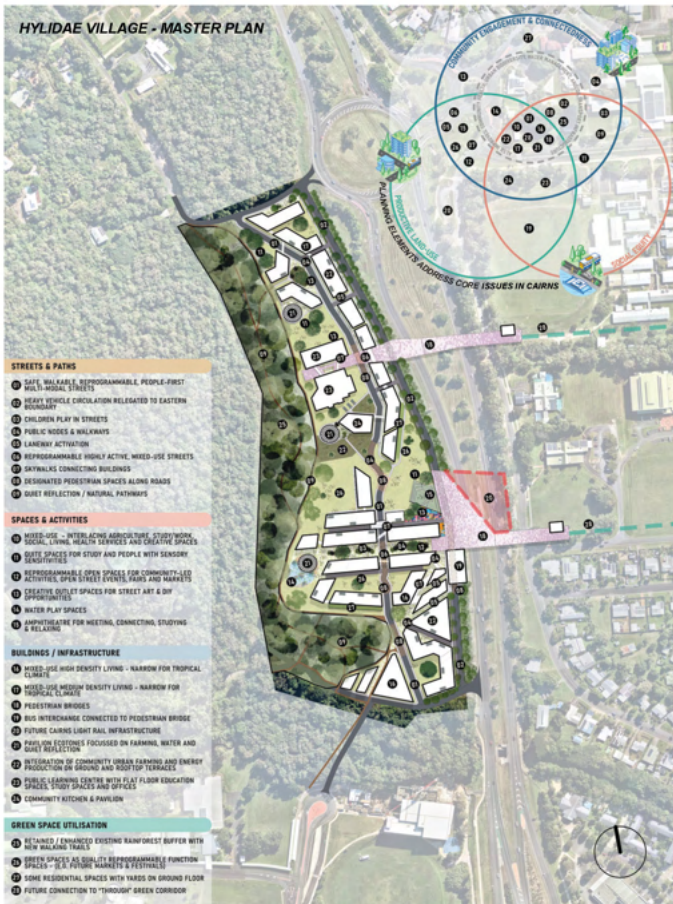


The final vision is to improve public spaces such as seating and eating/picnic shelter areas. The current public seating/open area is dark and shady (cold), making it feel unsafe and unpleasant to sit at.



Lucy Johnston

Planning UNDERGRADUATE



UDAD7006

HYLIDAE VILLAGE

Smithfield Strategic Urban Design Framework

Graduating her Master of Architecture, Bianca has had over 4.5 years of experience working across various low and high-rise residential developments, commercial projects, social housing, government work, public/private schools, and heritage projects from concept design through to construction documentation.

Particular interest lies in:

- | Adaptive & Sustainable Design
- | Urban Design
- | Public Spaces & Infrastructure
- | Education
- | Low-High Density Residential

Named after Smithfield's endangered family of tree frogs, *Hylidae Village* encapsulates a visionary approach to fostering healthy urban growth to tackle Cairns' unsustainable linear sprawl. It showcases a better way forward that integrates sustainable, inclusive, mixed-use productive landscapes that harmoniously blends natural environments, built-forms, and recreational spaces with urban framing, energy production, work, education and study spaces. A strategy that is crucial for a city that relies heavily on natural wonders for economic growth. This demonstrates how thoughtful design and community engagement can lead to thriving and balanced inter-species ecosystems for humans and non-humans, where diverse interactions and economic activities thrive.



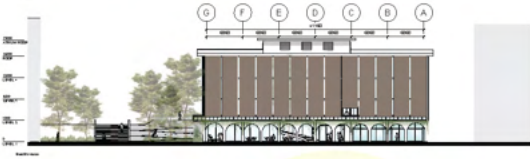
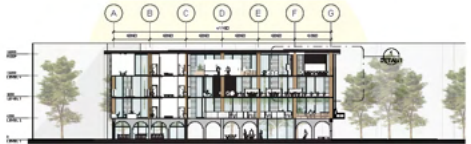
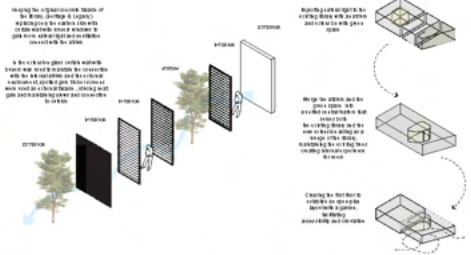
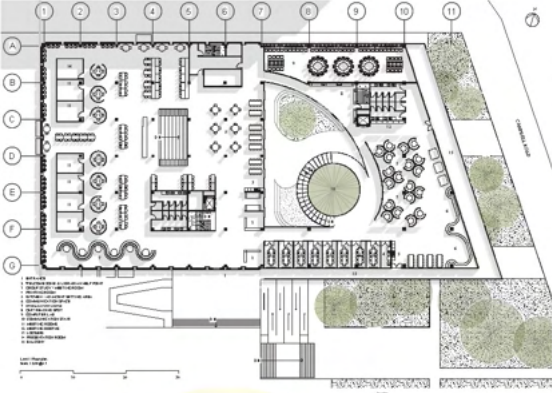
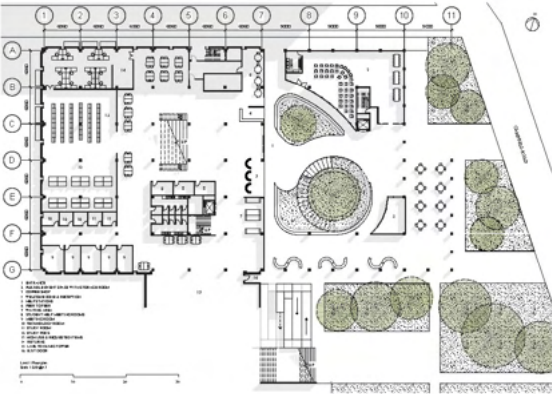
BIANCA RENÉE KEATH

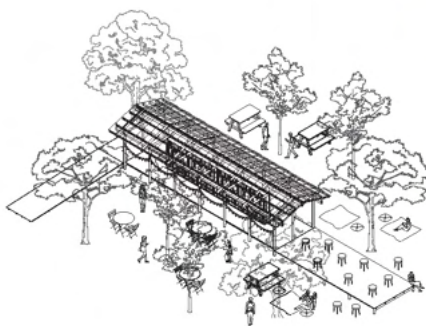
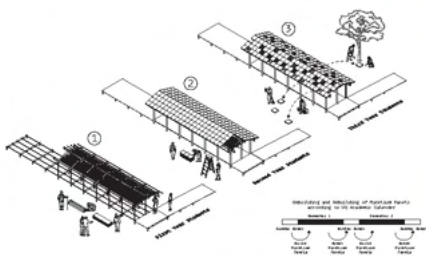
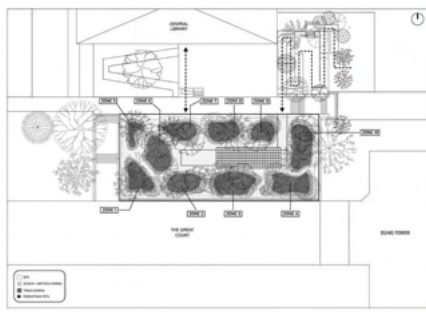
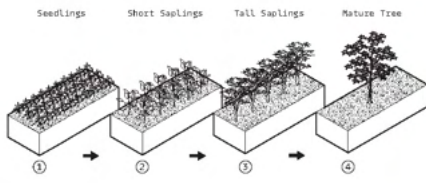
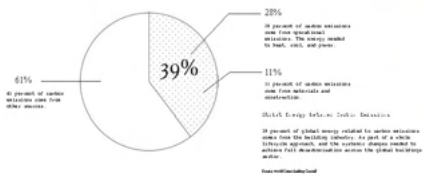
Architecture
MASTER

UQ CENTRAL LIBRARY

RETROFIT & EXTENSION

This design is an attempt to approach a new vision for future libraries focusing on sustainability, well-being and ownership of the users and creating a uniquely engaging experience while maintaining the connection to the land and the environmental elements and blurring the boundaries between future vision and needs and preserving the architectural identity of the original design, honouring the library's and university's heritage and legacy. The original concept was to import natural light and ventilation to the existing library through a central atrium and extension with green space, the atrium and the green space were merged into a unified central feature that serves both the existing library and the new extension acting as a lung of the library, maintaining the existing trees creating internal experience for users. The eastern facade is replaced with a glass curtain wall featuring louvered windows to enhance natural light and ventilation and ownership as the louvres could be controlled individually. Light weight sustainable materials were used in the extension like Cross-laminated timber, which was chosen for its eco-friendly properties, offers structural efficiency and supports local production, and Spotted gum timber screens in the façade, for its resilience to weather and sourced locally, provide shading and maintain visual and environmental connectivity, were installed in panels form, mimicking the existing concrete facade pattern to preserves the visual connection between the original and new design, blending seamlessly into the architectural narrative. The ground-floor open-plan layout with integrated greenery fosters accessibility and multifunctional use, establishing a comfortable microclimate.





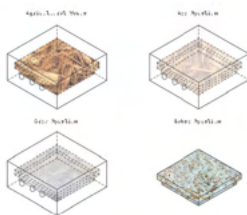
ARCH3200

THE GIVING ARCHITECTURE

A Design Philosophy Focused on Sustainability and Community Benefit.

As architects of the contemporary world, we face both design and material challenges in adopting sustainable practices to reduce carbon emissions and foster a healthy environment. So what can we contribute to this world?

For this project, the purpose of architecture is not to build but to disassemble and biodegrade. It transcends basic architectural principles, transforming from a resource-consuming process to one that gives resources. This unbuilding and rebuilding approach aims to minimise adverse effects on the environment.



Nature transcends all cultural preferences. The architecture draws inspiration from local ecosystems, where trees and plants absorb nutrients from their own organic waste. The architecture features a mycelium roof that naturally breaks down and provides nutrients to its surroundings.

I believe that architecture is not a beginning-to-end narrative but a journey that bridges nature and people, encouraging a harmonious relationship.



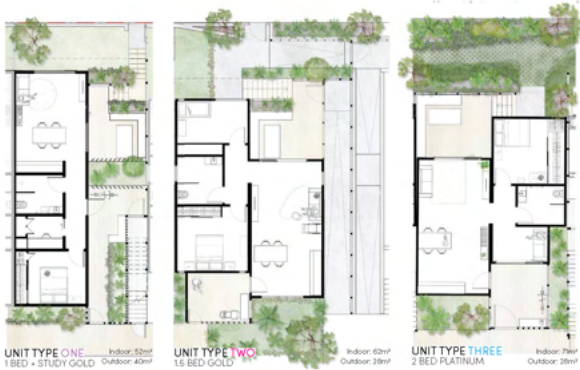
SEUNGHYUK KIM

Architecture UNDERGRADUATE

The Spaces Inbetween is a co-housing project for Housing Older Women, a not-for-profit supporting one of the most at risk groups for homelessness; older women. It prioritises agency, choice and flexibility to give them control over their lives and spaces, while allowing the benefits of a strong community, all while on a challenging site to demonstrate the flexibility this model can offer.

Utilising the QLD Government modular housing as a base, this project explores how a second skin and the spaces between dwellings can play a significant role in improving amenity and wellbeing when the choice is made to live together, better.

LIVING BETTER TOGETHER: THE SPACES INBETWEEN



SITE SECTION -



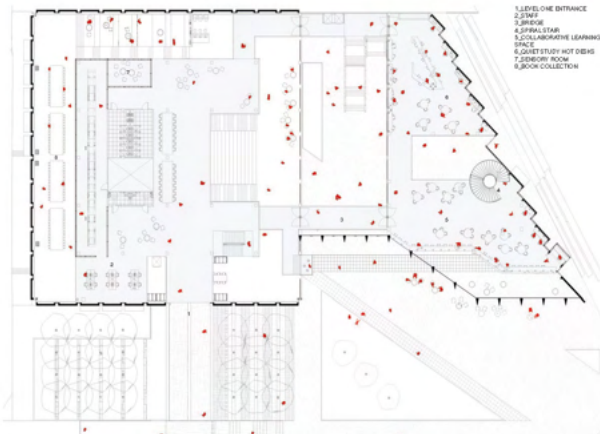


Render of Southern View - Respectfully Contrasting Facades

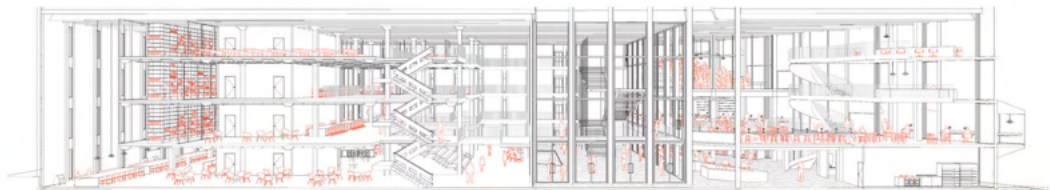
THE ROBIN GIBSON LIBRARY

The Robin Gibson Library proposal demonstrates a deep understanding of the University of Queensland's historical context and evolving needs. The project reflects strong architectural principles while addressing the University's goal of creating a dynamic campus. UQ seeks to enhance its environment through advanced architecture, providing spaces that support student life and foster academic engagement on both a local and global scale.

The proposal balances respect for the existing brutalist structure with innovative design. Originally conceived to house UQ's important books, the original building's security and functionality now contrast with the changing role of university libraries. The design aims to celebrate the history of the site while advancing architecture to meet contemporary needs, creating a building that is both respectful of its past and forward-thinking in its approach.



Level One of the Robin Gibson Library



Perspective Section - The Dialogue Between Solid and Void in the New and Old



Render of Bookcase - Preserved in Timber



Render of Innovation Studio - Framing Forgan Smith



ARCHIBALD KIRK

Architecture
UNDERGRADUATE



ARCH7043

AVALON APARTMENTS

AN AFFORDABLE HOUSING PROJECT

Located in St. Lucia, this housing project's intentions majorly lied in affordability, accessibility and a strong emphasis on connection to country. Ideally located in close proximity to major transportation links as well as to the University of Queensland and the city, this mixed use development features a diverse range of unit types and ample communal spaces. Designed with sustainability in mind, it integrates thermal comfort and water-sensitive strategies to address flood risk.

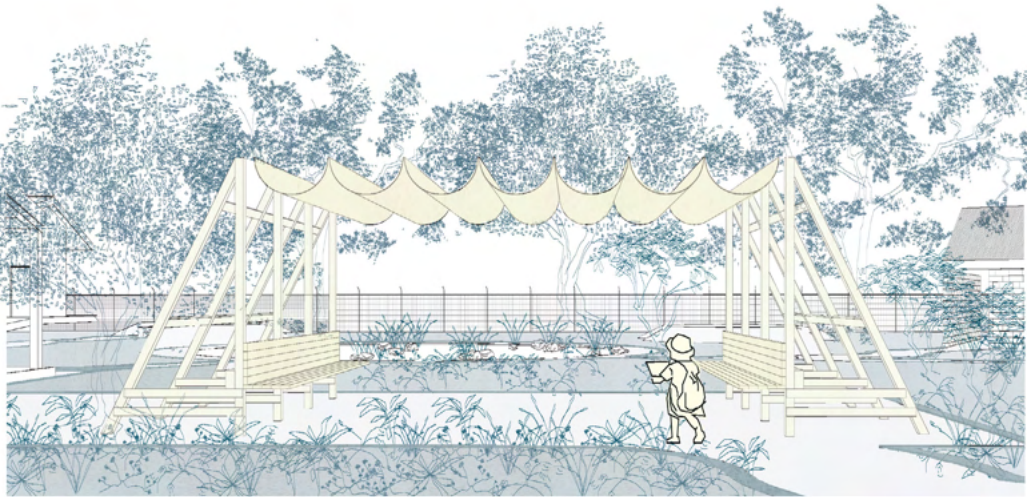
Sushmita is a Master of Architecture student with 4 years of experience across India and Nepal, with 3D rendering work experience in Brisbane. Her work spans multiple sectors, including residential, educational, institutional, commercial, and heritage projects. She takes pride in having designed an honorary museum for Tenzing Norgay, the first mountaineer ever to reach the summit of Mount Everest. Sushmita's passion for composing music and creating art by recycling has influenced her to design things that are pleasant, sustainable and functional. Her times spent caring for her grandmothers have structured her interest towards ease and accessibility aspects of design. Her strengths lies in 3D modelling, sketching, learning languages and being a team player.



SUSHMITA KONWAR

Architecture

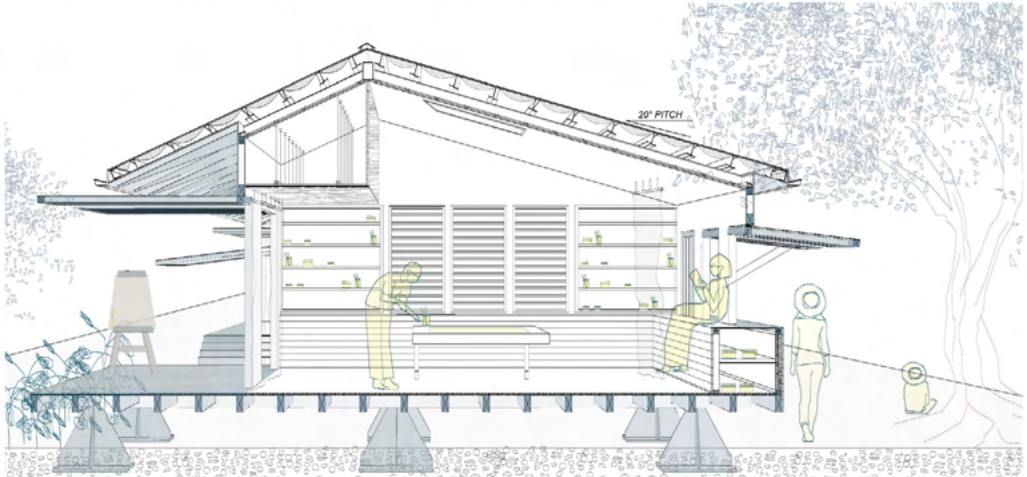
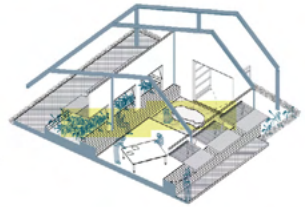
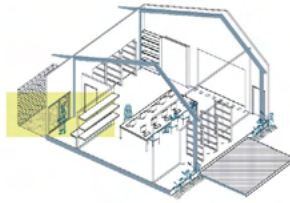
MASTER



MIRNIDYAN GUNUNA ART CENTRE

ARCH3100

Mornington Island Art Centre was a lovely project to complete in my undergraduate studies, as the design's briefs prescriptiveness around climatic response and cultural sensitive really drove my design decisions and allowed me to explore more creative solutions to sometimes simple ideas. Creating a large civic space that prioritises small moments is something that was centric to this project and was illustrated through my episodic fragements.



Sophie Jean Leckie

**Architecture
UNDERGRADUATE**



ARCH3200

CENTRAL PAVILLION, UQ CENTRAL LIBRARY EXTENSION

My name is Sarah Lin and I am an undergraduate architecture student. I have a passion for learning and creating eco-friendly designs that contribute positively to the development of our cities whilst ensuring sustainability.

The project "Central Pavillion" is a retrofit and extension to the UQ Central Library which allowed us to explore the hybridity of flexible spaces that are sustainable, adaptive, inclusive and long-lasting.

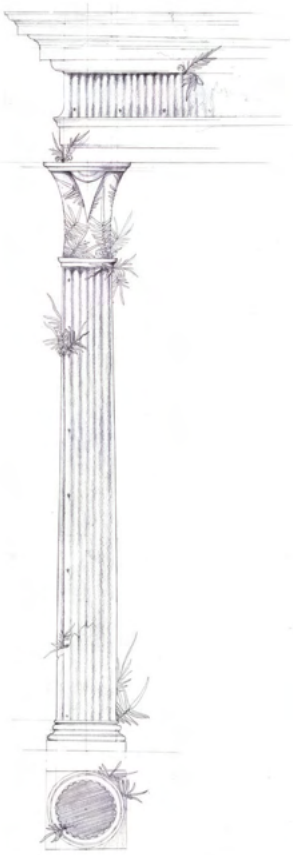
The Central Library extension project was my favourite design throughout my study. Through my personal usage and connection with the building where I've spent countless hours studying in, I was able to incorporate the feedback of my fellow classmates, librarians and professors to enhance the space.

I first explored the site from a precinct scale to understand the movement of the area to better position my extension and then narrowed down to the existing building to identify issues of ventilation, noise and smell to build a green and lightweight Queenslander style design.



SARAH LIN

Architecture
UNDERGRADUATE



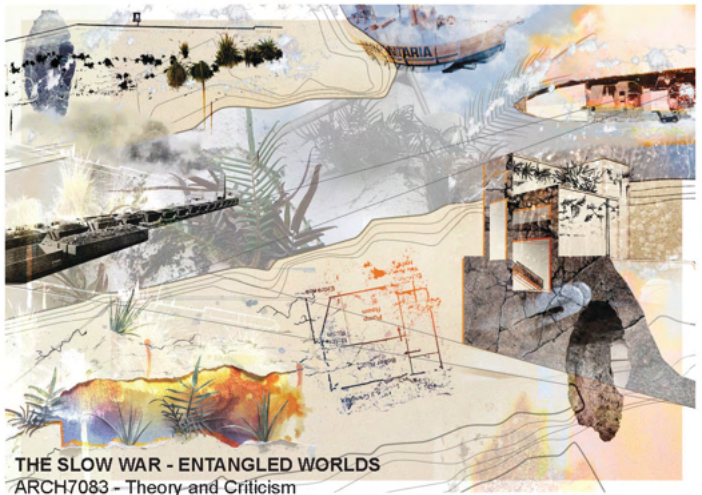
A NEW AUSTRALIAN ORDER
ARCH7072

My masters surprised me.

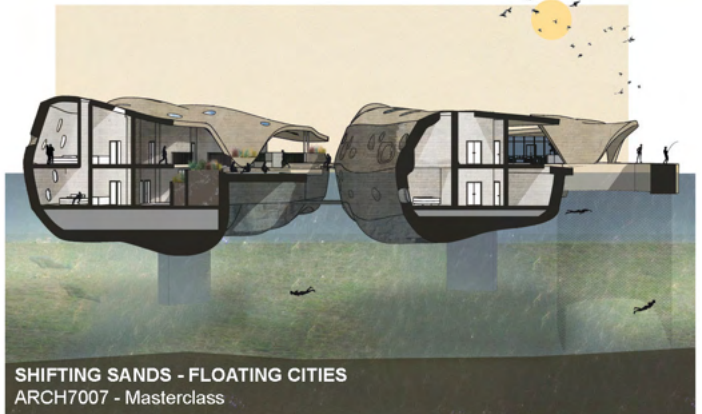
During my undergraduate, my focus had been all on design. I adored the story telling, the graphics, the problem solving. Of course this was still fun in my masters, but it was the research courses that I almost enjoyed the most.

All throughout my degree, I found ways of weaving together plants and architecture. It began with the floating city- an enormous 3D printed pontoon, designed to slowly disintegrate as oysters and seaplants take over. I explored plants taking over buildings yet again with my research into a local bomb shelter in South Brisbane, with its intrusive crown of ferns and grasses. I took this concept into my next research project, where I challenged myself to design an entirely new classical order- with an Australian spin. And finally, through my last design project I experimented with using natural biomes and greenspaces as a tool for placemaking and identity.

NAOMI MACKENZIE



THE SLOW WAR - ENTANGLED WORLDS
ARCH7083 - Theory and Criticism



SHIFTING SANDS - FLOATING CITIES
ARCH7007 - Masterclass



GENTLE DENSITY FOR THE MISSING MIDDLE
ARCH7004 - Dwelling and Density



Architecture
MASTERS OF ARCHITECTURE

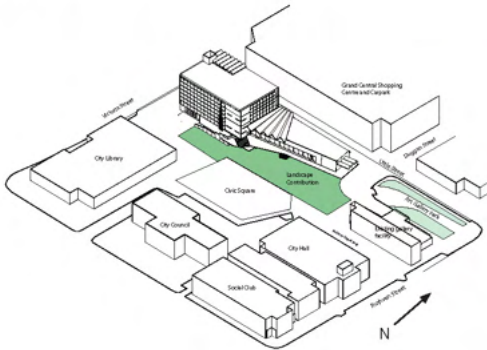
TOOWOOMBA REGIONAL ART GALLERY

Art, Place & Engagement: A Gallery of Significance.

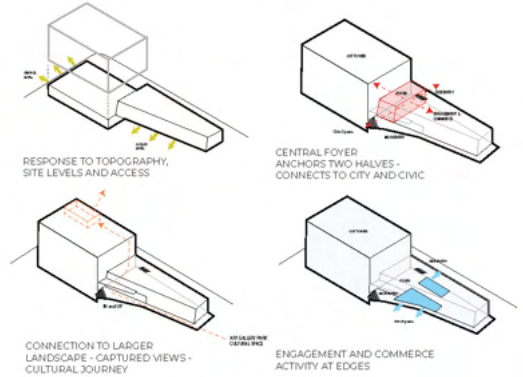
ARCH7007

This scheme for Toowoomba's new art gallery was completed early within the Master of Architecture program and is still my favourite project. The built form as a 'tower and tail' is responsive to the context, enhancing both the Civic Square and the First Nations park. The sculptural facade treatment announces the building's status as an important public building. The internal functioning of the gallery

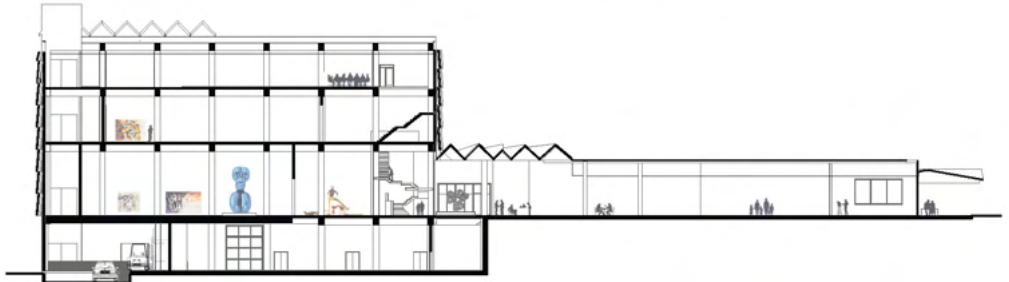
is well served by the arrangement of interior spaces, separating back of house from the public spaces, and allowing for flexibility in the scale of exhibitions and events. As a key building within the city's civic site, the permeability of the ground level encourages public engagement and provides an 'open all-hours' approach to activation.



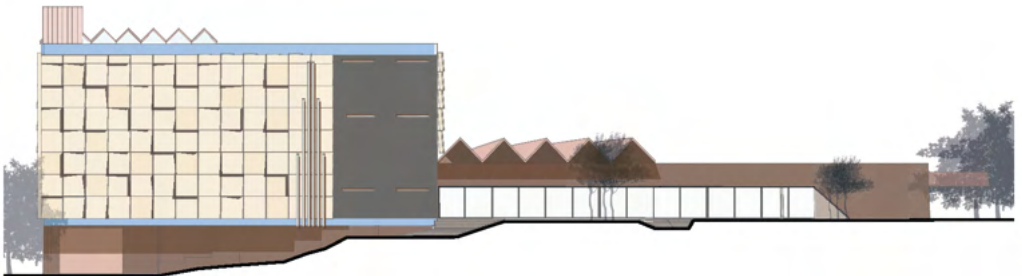
SITE CONTEXT MAP NTS



DESIGN STRATEGY NTS



LONG SECTION 1:200



PARKSIDE ELEVATION 1:200

MATT MALONE

Architecture
MASTER

ARCH7043

AVALON AFFORDABLE APARTMENTS

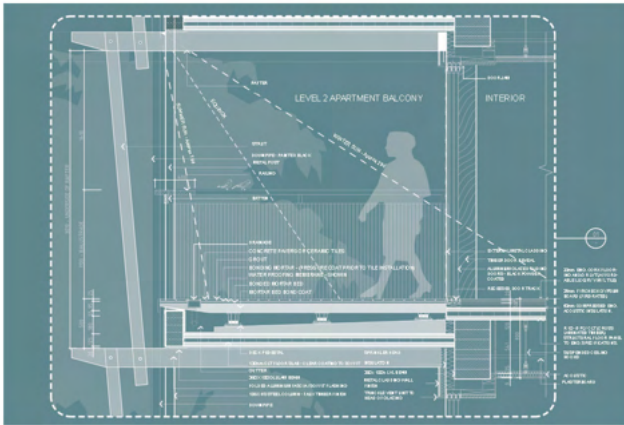
Hello

Aspiring architect
in a family of
Engineers!

4.5+ years of working
experience in commercial,
residential & interiors.

Embracing resilience,
heritage, and sustainable
design through a crafted
landscape response. An
activated rainwater garden
draws on Indigenous
connections to living water,
while an environmental

sustainable designed bio-
swale garden celebrates
resilience, integrating native
plants and organic drainage
to accommodate natural
site flooding. A curved ramp
entry unites these elements,
forming an educational and
sensory-rich environment that
provides spaces meaningfully
rooted in place.



ALISHA MANDLA

**Architecture
MASTER**



ARCH3100
**MIRNDIYAN GUNUNA
 ART CENTRE**

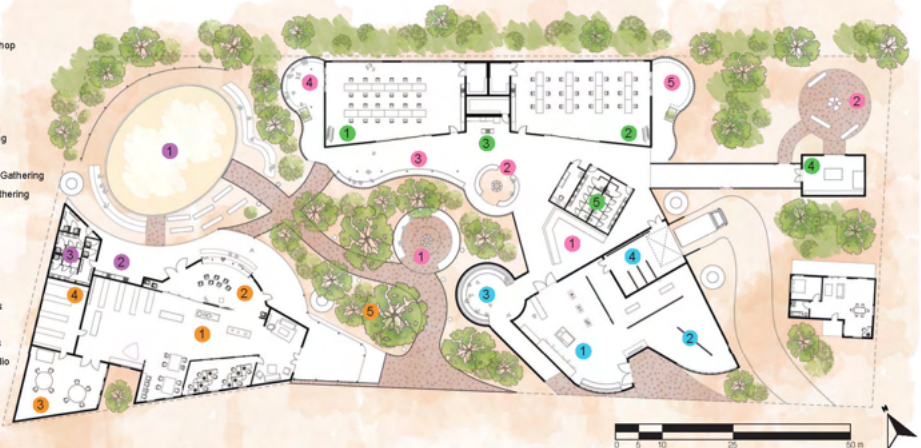
The art centre on Mornington Island, is a cultural and economical keystone for the Lardil, Yangkal, Kaiadilttribal and Gangalidda peoples that form the community. The largest exports from the island are cultural; First Nations artworks, and performances from dance troupes.



The design proposed focuses on supporting and sustaining the cultural, social and historical foundations these practices are inspired upon. The site is carved into three districts bases around these foundations. The social district provides the most important contributions to the design providing a large shaded nature walkway and comfort-able and lexible gathering spaces, making the site welcoming to unfamiliar visitors to become a hub for community gathering and teaching through mixing of knowledgeable and in-experi-enced peoples.

LEGEND:

- GALLERY**
- 1 Resident Artist Shop
- 2 Art Gallery
- 3 Event Space
- 4 Art Storage
- INTERMEDIARY SPACES**
- 1 Large Gathering
- 2 Medium Gathering
- 3 Small Gathering
- 4 Private Womens Gathering
- 5 Private Mens Gathering
- KNOWLEDGE CENTRE**
- 1 Artifact Display
- 2 Learning Centre
- 3 Private Display
- 4 Artifact Storage
- 5 Teaching Gardens
- COMMUNITY**
- 1 Dancing Grounds
- 2 Event Kitchen
- 3 Changing Rooms
- ART CENTRE**
- 1 Womens Art Studio
- 2 Mens Art Studio
- 3 Kitchen & Pantry
- 4 Workshop
- 5 Bathrooms



BRIANNE MCKENZIE

**Architecture
 UNDERGRADUATE**



DSGN3200

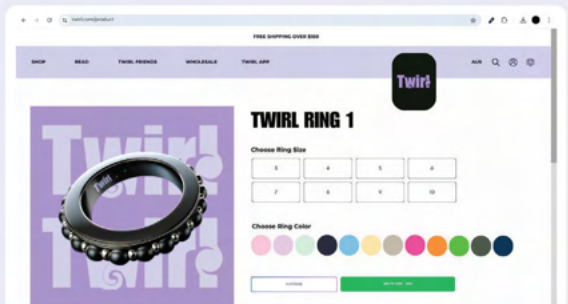
TWIRL: Smart Fidget Ring and Gamified Companion App

Hi, I'm Tanya Mohan, and I'm graduating this year with a Bachelor of Design. Driven by a passion for creating solutions that improve lives, my project Twirl addresses a critical issue among teens—vaping addiction.

As I dug into the complex reasons why teens continue to vape, I realized it's far beyond just nicotine; it involves social, behavioral, and psychological factors. Peer pressure, social media influence, stress relief, and the ritualistic habits around vaping make it difficult for teens to quit, even when they're aware of the dangers.

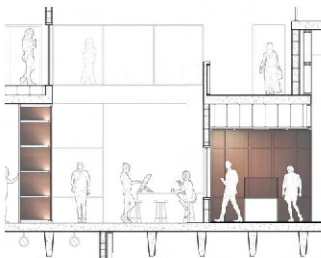
To tackle this, I created Twirl, a smart fidget ring that merges functionality with style and behavioral support. Made from sleek aluminum alloy, the ring features tactile rotating beads that cater to the need to fidget—a common habit for teens who vape. It tracks the user's fidgeting activity and resting heart rate, which helps monitor vaping habits over time. Paired with a gamified app, Twirl transforms quitting into a supportive journey, with users earning rewards, tracking streaks, and competing with friends on a leaderboard. The app's virtual pet grows with each vape-free day, turning progress into a visible achievement, which is both fun and motivational.

Twirl isn't just a product; it's a commitment to Gen Z's wellness, sustainability, and personalization. Our e-commerce website offers customizable options, and sustainable packaging reflects our eco-conscious philosophy. By blending stress relief, gamification, and social connection, Twirl empowers teens to take control and break free from addiction in a way that's cool, engaging, and supportive.



TANYA MOHAN

Design
UNDERGRADUATE

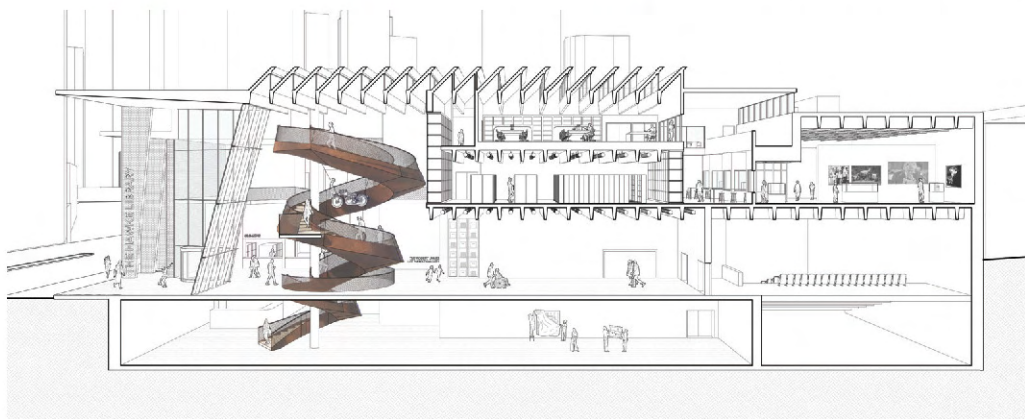
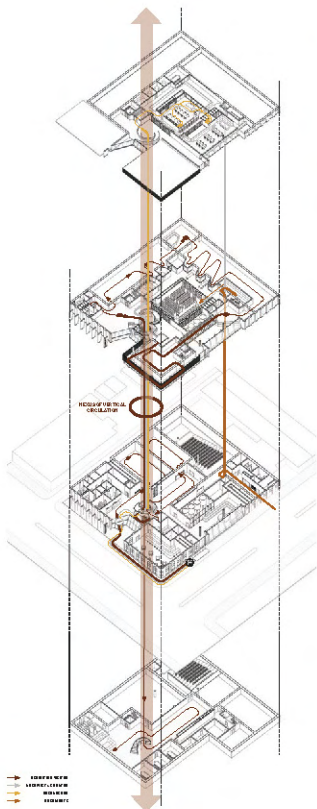


ARCH7002

THE HAWKE LIBRARY

Ally Molachino is a Graduate of Architecture with 4 years of experience in professional practice, working on a multitude of projects from concept design through to construction documentation. Throughout her studies, she has developed a keen interest in public building design, particularly exhibition and library spaces, and endeavours to explore this interest further as she progresses in her career.

The Hawke Library celebrates the political and personal accomplishments, as well as the cocker attitude and antics, of Australia's Larrikin in the Lodge, Prime Minister Bob Hawke. The design of the archive, exhibition and public gathering spaces aims to blend the realms of public and politics, eliminate social and spatial hierarchies, and throw in a bit of Bob's love for the grog.



ALLY MOLACHINO

Architecture
MASTER

AVALON AFFORDABLE APARTMENT - ST. LUCIA

The project at hand is a mixed-use development in St Lucia. It is to be composed of substantial amount of affordable housing units that would contribute to the growing demand of housing in nowadays challenges. A focus has been placed on **Designing for Country.**

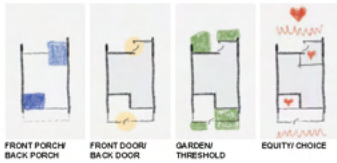
Throughout my studies, I got to appreciate the diversity of the discipline. I wish to keep exploring new facets of architecture.

Where I lack in skill, I compensate through hardwork and the motivation to become a better version of myself.



DYLAN MU SAN

Architecture
MASTER



ARCH7004

WELLINGTON ST CO-HOUSING

Located in Brisbane's inner North suburb of Banyo, the proposal for Housing Older Women offers a green and community focused model of living.

Defining the public and private spaces of the co-housing drives the approach of the design. Thresholds and transitional spaces between what is the neighbourhood to the shared commons to the private dwellings are defined by landscaping, covered outdoor spaces and articulated entrances.

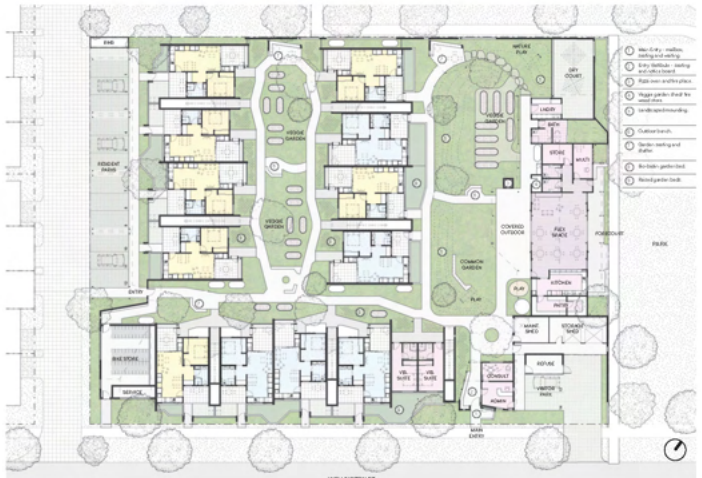
The built form draws from the neighbourhood vernacular of weatherboard and masonry, with the roof forms calling to the strong industrial character and history of the suburb.



TYPICAL DWELLING SECTION



COMMON HOUSE SECTION



GROUND FLOOR PLAN

WELLINGTON ST



ERIC QUANG NGUYEN

**Architecture
MASTER**

ADVANCED ARCHITECTURAL DESIGN: DWELLING AND DENSITY

THE MISSING MIDDLE
 Set in Banyo Queensland, this project explored suburban density on a macro scale and a co-living proposal on a micro scale. The brief for the co-living proposal was to provide 25 dwellings to be accommodated by older women, or 'the missing middle,' as overseen by our client Housing Older Women. As well as the dwellings, the site was to include a common house with shared amenities including a kitchen, dining room and laundry, but also provide space for leisure in the form of open green spaces, a communal veggie garden, a bath house, a playground for visiting grandchildren and places to pause and relax.



PROJECT BRIEF

ELEMENTAL MODULAR CONSTRUCTION

OLDER WOMEN

COMMON HOUSE

25 x DWELLINGS

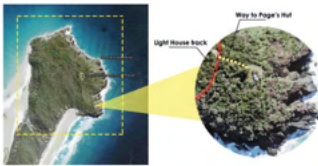


- 1 outdoor entry foyer
- 2 indoor foyer
- 3 bike parking
- 4 admin office
- 5 meeting room
- 6 storage room
- 7 meeting room
- 8 breakfast space
- 9 outdoor dining
- 10 laundry + outdoor drying court
- 11 kitchen
- 12 laundry
- 13 staff lounge
- 14 veggie garden
- 15 maintenance shed
- 16 garden shed
- 17 children play area
- 18 visitor toilet

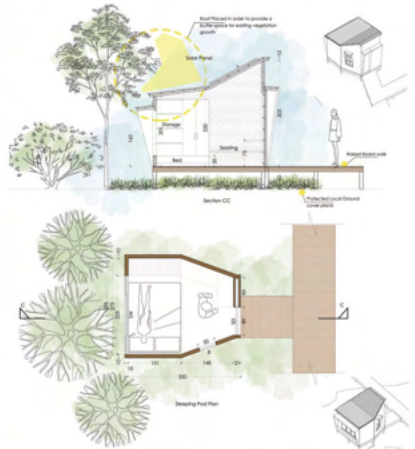


SOPHIE OLIVER

Architecture
 MASTER



Location: Double Island Point - Page's Hut

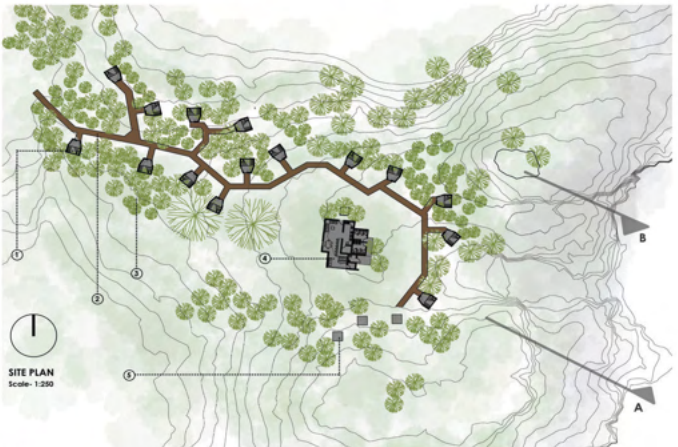


ARCH7005

DOUBLE ISLAND- SLEEPING PODS

Offering sleeping pods nestled within the national park, thoughtfully designed to harmonize with nature in a sustainable way.

The proposed design for Double Island Point aims to transform it into a sustainable, tourist-friendly destination that preserves its natural beauty by introducing a designated camping site near Page's Hut with built-in sleeping pods, each accommodating two people. These sleeping pods provide a low-impact, eco-friendly option for visitors to experience the scenic environment without needing personal camping equipment. The design prioritises sustainable infrastructure improvements, such as eco-sensitive boardwalks connecting key areas which is raised over the ground, shaded rest zones, and restored community facilities within Page's Hut that include toilets and a kitchen. Through thoughtful planning, this proposal aims to create a model of sustainable tourism at Double Island Point.



LEGEND:

1. Sleeping Pods: Accommodate 2 people
2. Board Walk: Shaded board walk connecting sleeping pods
3. Existing Vegetation Canopy
4. Common Space with Kitchen and Toilet: Restoration of Page's Hut
5. Trestle Platform



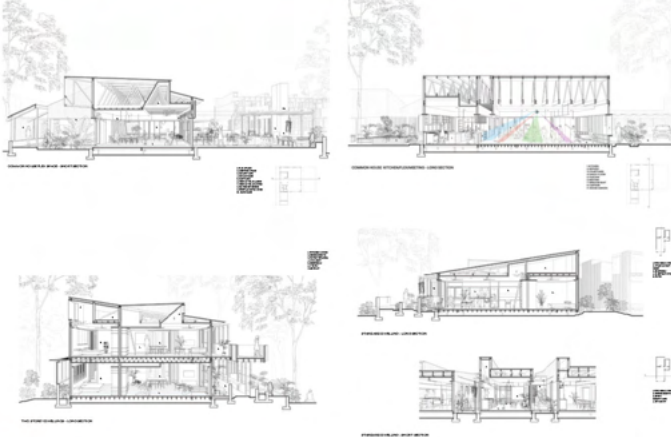
THERESA WINNY PA

**Architecture
MASTER**



ARCH7004

BANYO'S BACKYARD



In the heart of Banyo, this proposal for a co-living community seeks to celebrate the backyard through the creation of a vibrant communal spaces. The design for Housing Older Women (HOW) emphasises shared spaces for gathering and offers a co-living arrangement informed by the 'Queenslander'. Deep porches and central courtyards allow the inhabitants privacy and flexibility to live their best lives. Modular construction enables an efficient and robust scheme with consideration of future adaptations and personalisation.



CO HOUSING - COMMON HOUSE INDOOR/OUTDOOR PERSPECTIVE



Ethan Palmer

Architecture
MASTER



The Banyo Co-Housing project is a proposal for a development in the middle of suburban Banyo for the client, Housing Older Women. Co-housing, as a model, seeks to create affordable micro-communities. The common house is at the heart of the proposal, where residents can cook, host events, socialise and work together. The units are small and affordable: anything not used at least twice a week by a resident is a shared facility within the common area.

After seven years at UQ, Jack Reboul is graduating his Masters of Architecture. He has 3 years of work experience, working from concept to construction documentation over a wide range of projects. Jack's career has currently included experience in aged care, retirement villages, and retail projects.

- His interests include:
- | Affordable Housing
 - | Education
 - | Sustainable Architecture
 - | Parametric Design

Gardens and green space are central to this project; a rewilding strip runs down the centre and a veggie garden flanks the north.

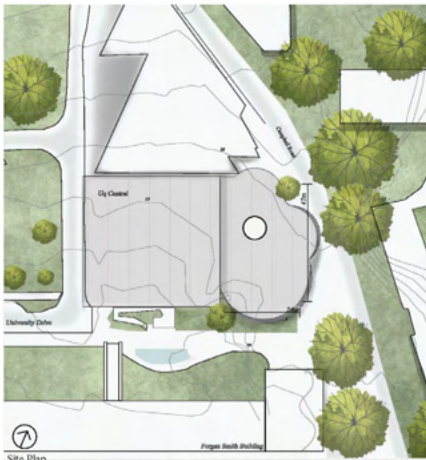
Jack hopes to expand his career into his areas of interest, and work on creating affordable, sustainable architecture.



JACK REBOUL

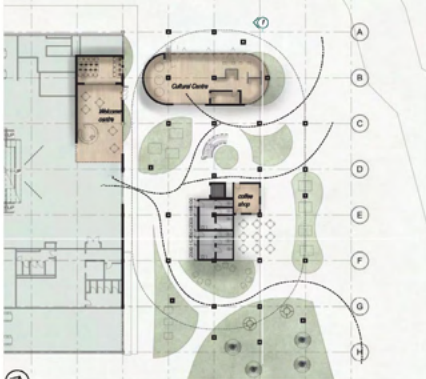
BANYO CO-HOUSING
ARCH7004

Architecture
MASTER

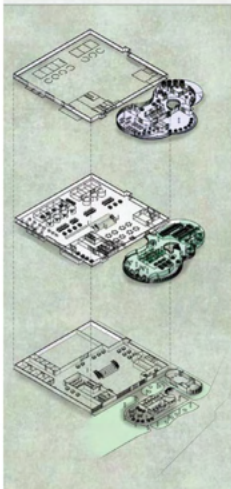


Site Plan

Level 01



Level 01



Flow

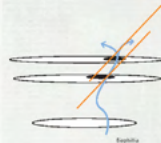
Curve

Biophilia

ARCH3200 Sylva Flow

This design is inspired by the natural curvature of organic forms, promoting fluid movement throughout the building. Smooth, sweeping lines guide users effortlessly, ensuring accessibility and comfort. This flow-oriented approach creates a harmonious relationship between the structure and its occupants, enhancing navigation while fostering a seamless connection with nature.

Embracing nature in the design extends beyond aesthetics, drawing on principles of biophilic design to bring the outside world in. Living walls and indoor gardens integrate greenery directly into the space, improving air quality and creating a calming environment. Sunlight pours in through strategically placed windows and skylights, reducing reliance on artificial lighting and providing serene views of surrounding landscapes. This natural illumination enriches the user experience, making the space feel vibrant and welcoming.



Section 01



REEM RIAD

Architecture
UNDERGRADUATE



ARCH7005

TIER & TWINE Interpretive Centre

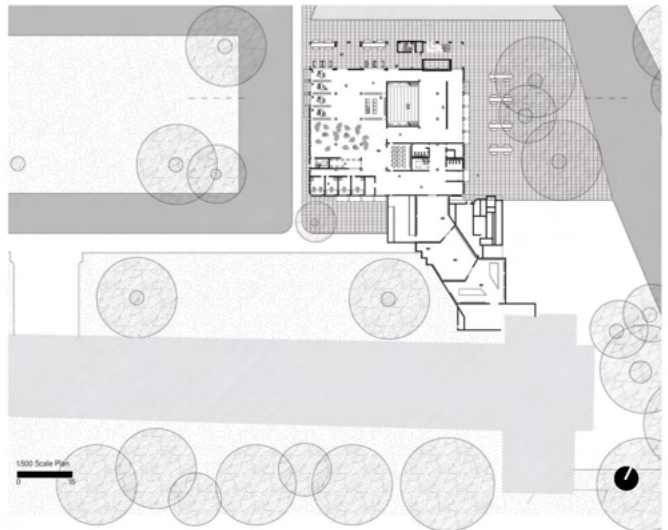
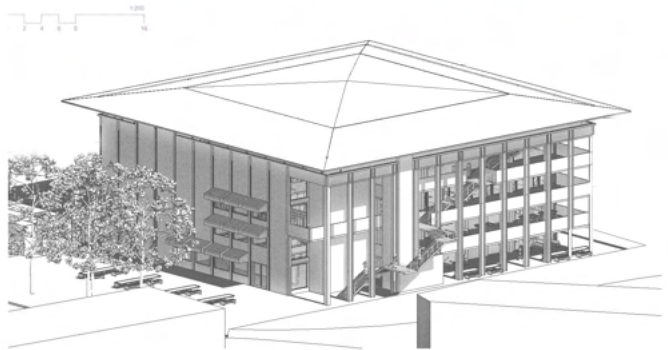
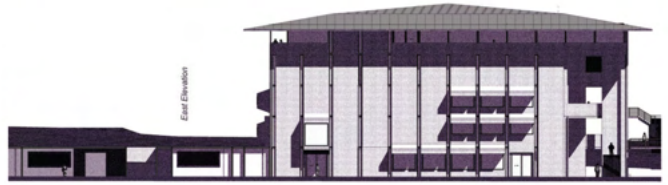
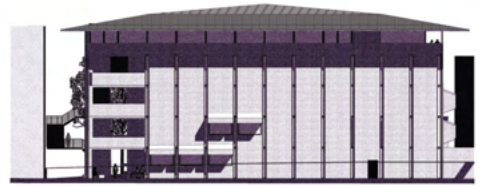
Tier & Twine is a proposed new interpretive centre for the Heron Island Research Station conscious of the unique landscape and wildlife conditions of this island site.

Hannah Rowlands is a Master of Architecture graduate with 5 years experience in professional practice here in Brisbane. Currently working primarily in health care, her history as a high school classroom music teacher also sparks an interest in the design of learning spaces. This formed the basis for her thesis project which investigated how learning spaces can contribute to students emotional engagement in learning.



HANNAHROWLANDS

Architecture
MASTER



ARCH3200

CENTRAL LIBRARY RETROFIT

The project aims to resolve functional and aesthetic issues with the current UQ Central Library. The digitalisation of study materials and tools has triggered a demand for new study spaces which facilitate online learning. The existing central library building (c.1973) - a large, brutalist, monumental building - was designed to be a storage space for the university's extensive research collections. The rather low percentage of glass around the facade is testimony to this original purpose. The majority of these collections have been relocated to private access storage facilities and the library has begun to accommodate for pc use.

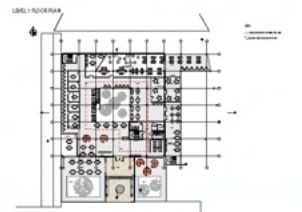
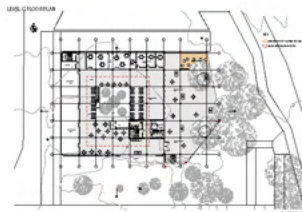
The effort to digitalise the library as a space, begun in 1997 and was a project taken on by Wilson Architects. Their efforts included the addition of the Duhig Link (1997) and then an open plan auditorium between levels 1 and 2 (2020). These additions, are commendable, in that they have connected and opened up, a once rigid storage structure. However, it appears as though there has been a lack of consideration for the top two floors.

My proposal will consider how the top two floors can be re-configured to meet the needs outlined in the design provocation. Furthermore, I plan to strip away parts of the facade, creating terraces for outdoor study, that is complemented by an additional roof top study space.

This project aims to address the design provocation through a minimal intervention. It takes inspiration from the original 1973 interiorspaces, as pictured to the right, and imagines how this atmosphere can be recreated in a digitalised study space.

AMELIE RYAN

Architecture
UNDERGRADUATE



ARCH3200

CENTRAL LIBRARY REFURBISHMENT

ABOUT ME: Hi, my name is Tiahna and I am a 2024 Bachelor of Architectural Design graduate. Creating a change in the built environment through designing spaces where people spend numerous amounts of time in are my drivers in my architecture career, as these spaces are the ones that hold a special place in an individual's memory, and shape the way that they experience the world. As of next year, I will be working in a firm assisting with a range of education, residential and commercial projects, which will extend my knowledge of architecture beyond university education.

PROJECT: The refurbishment of UQ's Central Library carefully considers making meaningful improvements, based on the feedback from the current library's stakeholders. Based on these findings, the new library's design drivers include: clear circulation, engagement with nature and inclusive spaces. Considering Central Library's past reputation of being an outdated, concrete heavy structure, it's convenient location and 24/7 facilities were still under appreciated by UQ students and staff.

These issues have driven a change, where the library can be a place where students and staff feel at home, gaining a sense of ownership in the new nature filled, bright, clear study and work spaces.

A library that inspires thinking, provokes motivation and reduces stress is a successful library to me, and creating this change is the rewarding part.



TIAHNA SEET

Architecture
UNDERGRADUATE

The Concept

Pawsitive Connections combines a free, virtual pets app with a companion robot pet, making pet companionship more accessible to residents in aged care centres.

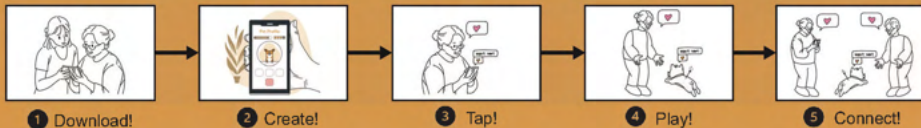


The virtual-pets app allows users to interact with virtual pets, fostering a sense of companionship and joy.



The companion robot pet is an additionally purchasable product that complements the virtual experience by providing tangible interaction and emotional support which mimics the behaviour of real pets.

The Journey to a Pawsitive Connection:



PAWSITIVE CONNECTIONS

[Happiness in the palm of your hand.]

Pawsitive Connections is a transformative solution designed to bring the joy and benefits of pet companionship to aged care residents by bridging the gap for aged care centers that lack resources for live pets.

Research highlights the positive impact of pet companionship on mental, emotional, and physical well-being, including reduced stress, improved mood, and increased social interaction among residents of aged care centres. However, not all aged care centres have the resources or opportunities to provide residents with access to pets and a significant portion of the older adult population lacks access to pet companionship due to various constraints.

To address this disparity, the concept of robot pets has emerged as a viable alternative. **Pawsitive Connections** offers a unique take on this by combining a free, virtual-pets app with a companion robot pet to make pet companionship more accessible to residents in aged care centres.

Pawsitive Connections offers a holistic approach to enhancing the quality of life for older adults living in aged care residencies. By bridging the gap in access to pet companionship, **Pawsitive Connections** aims to promote emotional well-being, reduce loneliness, and foster a sense of connection and joy among residents.

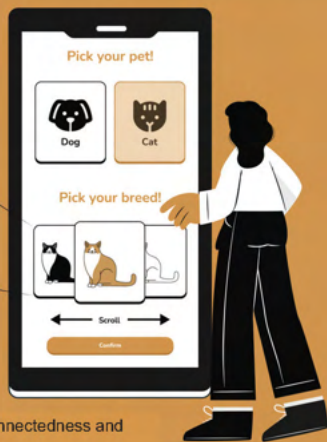
Personalisation

Users have the option to choose between a cat or a dog, and select from various breeds for each species.

They can also further personalise their experience by naming their pet. This way they can create (or recreate!) their perfect companion.



With this power to customise their own virtual experiences in-app, each resident gets the opportunity to form a unique and meaningful bond with their personal pet, which ultimately works to enhance their sense of connectedness and emotional wellbeing.



DSGN3100

SHIDEH SHASTI

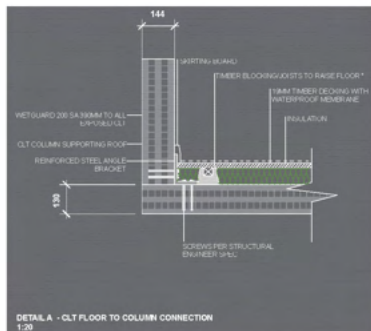
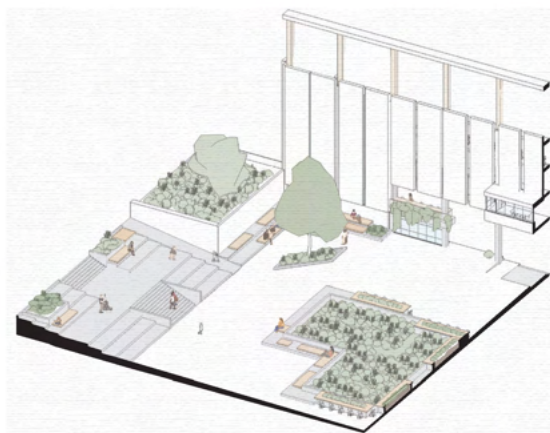
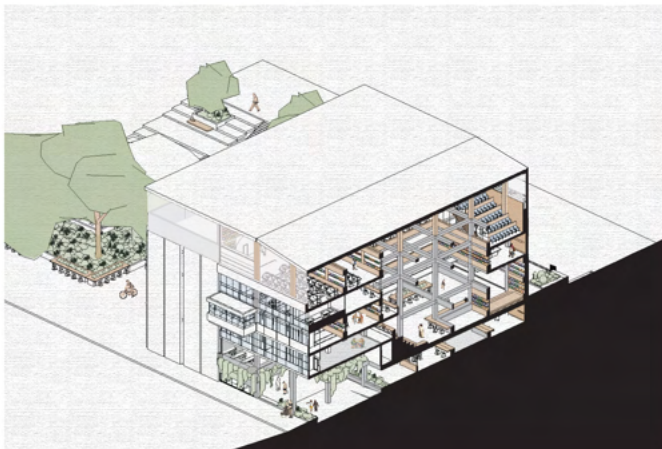


Design
UNDERGRADUATE

CENTRAL LIBRARY REFURBISHMENT

The UQ Central Library project conspires to derail the idea of 'deserving' or 'earning' a place within the library. The emphasis on new technology has created an unhealthy student environment, minimising the library experience to the personal laptop. Yet historically, libraries are community centers, creativity epicenters and collaboration hubs. Modern pedagogy has shifted from traditionally immersive learning, to tech-nocentric late-stage capitalism. The core issue of the existing central library is the capitalistically skewed instant-gratification cycle. The library is operable 24/7, yet there is no space for students to live a balanced life. By recentering the values of the existing library away from commercialistic hedonism, an holistically inclusive environment can finally be fostered.

Our senses translate our experiences of a building. Therefore, to re-design how the individual finds instant gratification within the library, the senses must be lead in the right direction. Through the touch of real books, smell of fresh air, sound of community, the library is re-claimed as a healthy student space. Through subliminal reminders, the building aims to prompt a perspective shift within the next generation.



SOPHIA SMITH

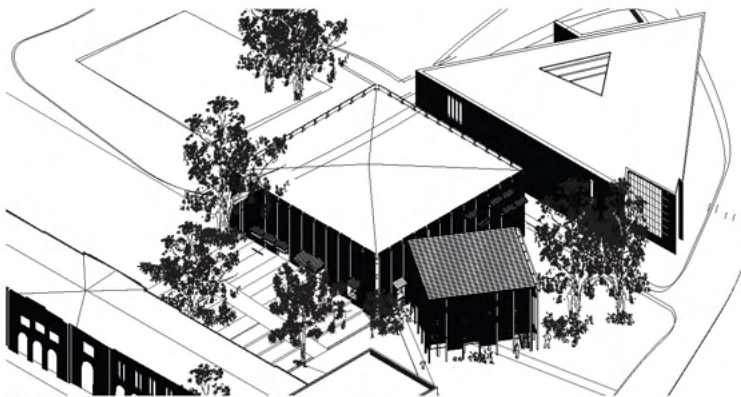
Architecture
UNDERGRADUATE



EASTERN FORECOURT ELEVATION



ORIGINAL ENTRANCE TO CENTRAL LIBRARY



SITE AND ISOMETRIC



CROSS SECTION THROUGH OLD AND NEW

CENTRAL LIBRARY, UQ

Site:
27.49608° S, 153.01359° E
Duhig Lane, St Lucia, QLD

Programmatic Requirements:
Studios, Seminar Spaces, Conference Rooms, Book Storage, Study Spaces, & Event Spaces.

Lessons Learnt:
1. Differentiating between client desired elements and sustainable options, allowing the brief to be met in the most responsive way.

2. How to design flexible programs within a heritage space, allowing the heritage elements to prevail.

3. GLT Construction methods to allow for a continued concrete floor and an adaptable structure for future designs.

What I Would do Differently:

1. Further develop the ground level to optimise the space for events and future uses and create a lighter structure.

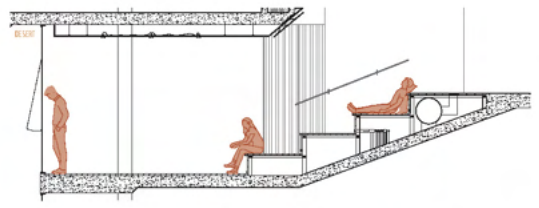
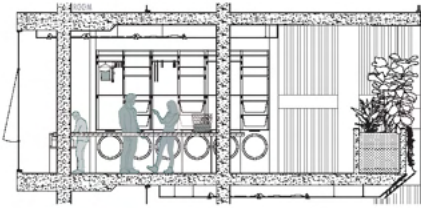
The retrofit and extension to UQ's Central Library is a manifestation of four defining considerations: context, heritage, access, and endurance. These points provided the basis for all decision making throughout the project, understanding that designing a built form in a place of open space will interrupt the existing site and therefore must perform a role that cannot be performed within the existing conditions. This ideology is carefully considered in the setting as the existing central library provided the opportunity to house a number of the proposed spaces. The design is considerate of the idea that the most sustainable thing to do is to do less. Therefore the proposal is structured to retrofit the existing library to house as many of the spaces as possible. The rigid and reticent nature of Gibson's design is carefully considered and returned to its original form as the new design counters it with its flexibility. The external area of the original site and its prevailing use as a space to gather created the opportunity to reinstate and utilise the southern and eastern forecourt. The new lightweight timber building is inspired by the original rigid concrete building in its vertical nature, allowing for the new functions Central couldn't facilitate.



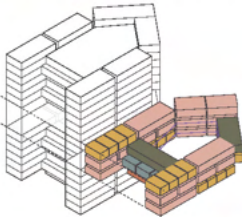
LAUREN STEGMAN

Architecture

UNDERGRADUATE



ROOM confrontation of identity and exposure of life's indiscretions
HIDEOUT common introspection
DESERT complete disconnection from identity and contribution to the commons
HOTEL short but deep connection to personal identity, intimate connection to others
APARTMENT superficial personalisation and confrontation of others identity



ARCH7004

inCOMMONS
a convivial society

The proposal for 600 Coronation Drive aims to create a commons in the heart of Brisbane. A convivial society where people can live harmoniously, express individualism, resolve conflict and contribute to the positive evolution of the world. For this to work, architecture must be reimagined and reconfigured, along with popular socio-political beliefs around identity. Breaking down traditional ideas about identity, community, public and private space, circulation, and structural systems, this project delivers a complex ecosystem of communal living.

The very first design studio in my Master degree was my most memorable one. It was challenging and out of the box, exploring topics such as gender, sexuality, race and identity in architecture. Topics i once thought were unrelated to architecture are now impossible for me to ignore.

"by convivialism we mean a mode of living together that values human relationships and cooperation and enables us to challenge one another ... in a way that ensures consideration for others and for nature"
 - Convivialist Manifesto (2014)

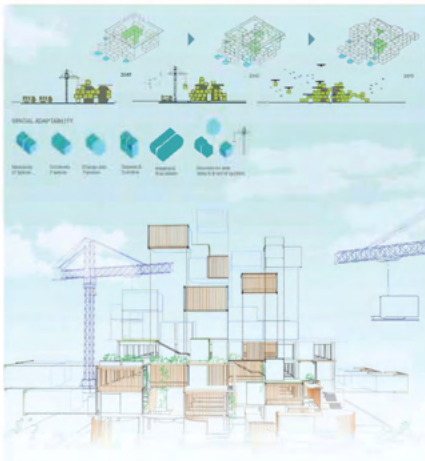
"It is important to recognise that the abolition of identity does not imply the destruction of difference as such, thus making everyone the same. On the contrary, it initiates the release and proliferation of differences that do not mark social hierarchies.

- Hardt and Negri in Commonwealth (2009)



PAITYN STEPHENS

Architecture
MASTER

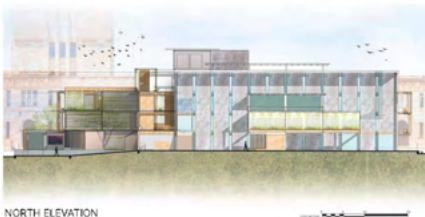
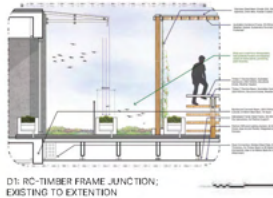


ARCH 3200

MODULAR SYMBIOTIC SYSTEM

With the ever-changing context, the UQ Central Library faces challenges in responding to its dynamic environment. As the definition of a library evolves in digital age and beyond, alongside the rise of local and global issues, there is a pressing need for a sustainable adaptive system to navigate this dynamic environment now and in the future. Consequently, the system must effectively respond to environmental degradation and climate change while ensuring accessibility and inclusivity, all while preserving heritage. This project addresses these challenges by viewing architecture as a living spatio-temporal entity capable of adapting to changing contexts. It positions the UQ Central Library as a modular solution that metabolises and symbiotically adapts to its surrounding sociocultural, environmental, climatic, and technological changes over time.

The modular symbiotic system utilizes its modules to create cultural continuity and inclusivity through formal and spatial languages, enhance accessibility and efficiency through the permeability of modular composition, and promote environmental regeneration through passive systems as part of the modules' performance as a whole. The modules are made from sustainable locally sourced timber, reducing CO₂e throughout its supply chain.



KEVIN SURYAWIJAYA

Architecture
UNDERGRADUATE

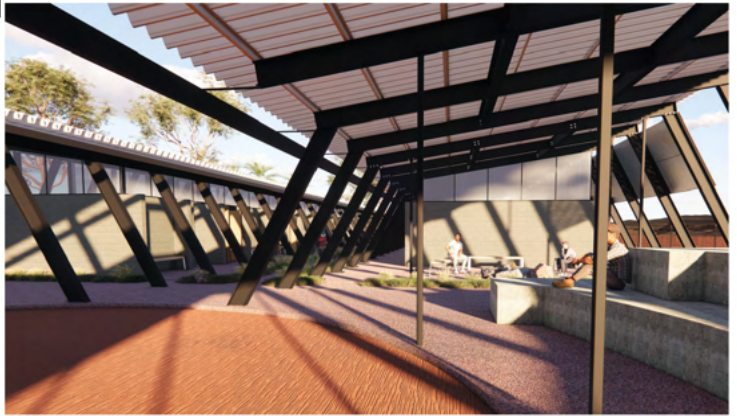
TERRA LINK PAVILION

The cultural embrace of home extends far beyond the built environment; My connection to community transcends generational indifference. The affiliation to my mob runs deep through the plains of cultural intricacies; My time away from home only intensifies this connection.

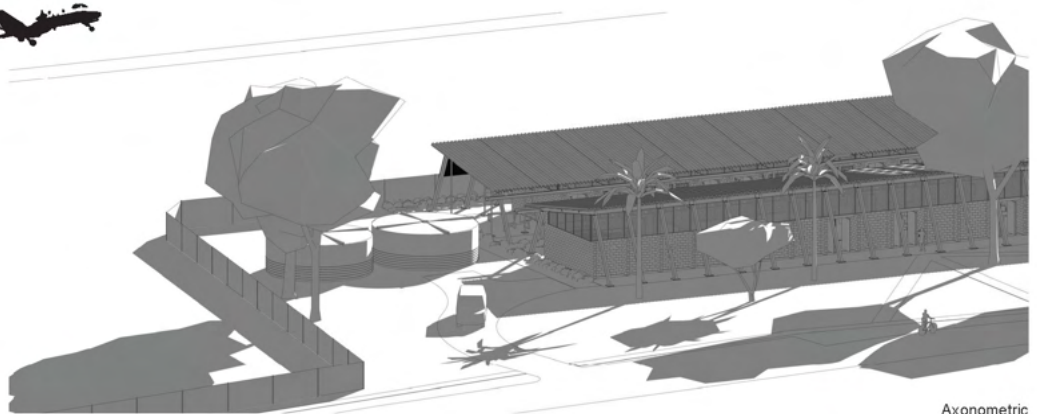
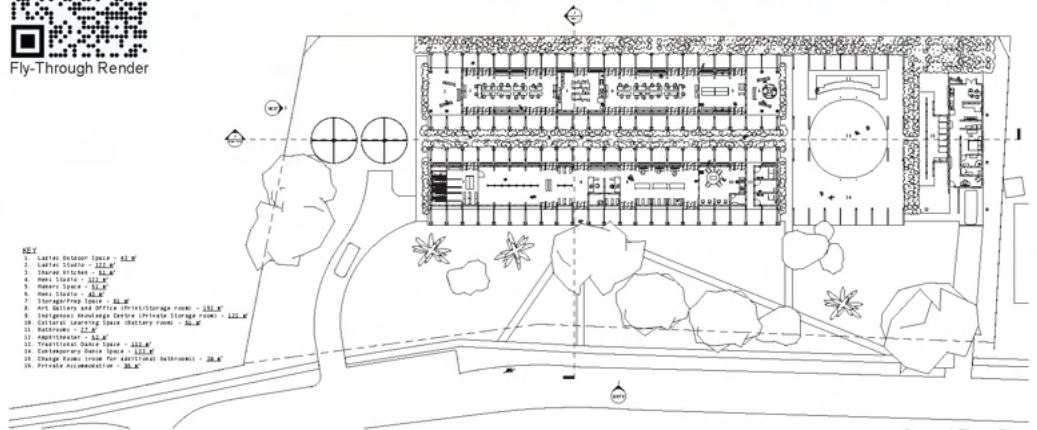
I find myself longing for mundane practices. The expression of dance, an embrace of culture, a means of communication, an evocative representation of imparting knowledge through visual storytelling. The thought alone of returning home makes me fear I will never want to leave.

~ The symbolic nature of the connection to country through an interpretive storytelling lens of indigenous understanding

ARCH3200



Community gathering space (fireplace, ampitheatre and traditional dance space)



HARRY THOMAS

Architecture
UNDERGRADUATE



1. COURTYARD



2. STUDIO WORKSPACE

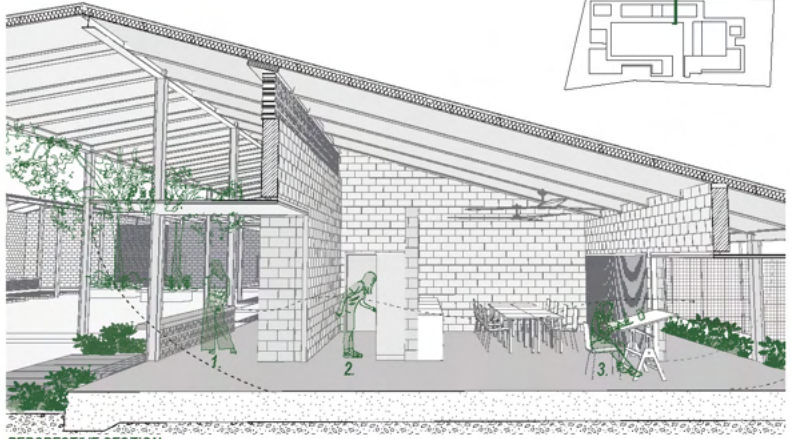


3. VIEWS TO COUNTRY

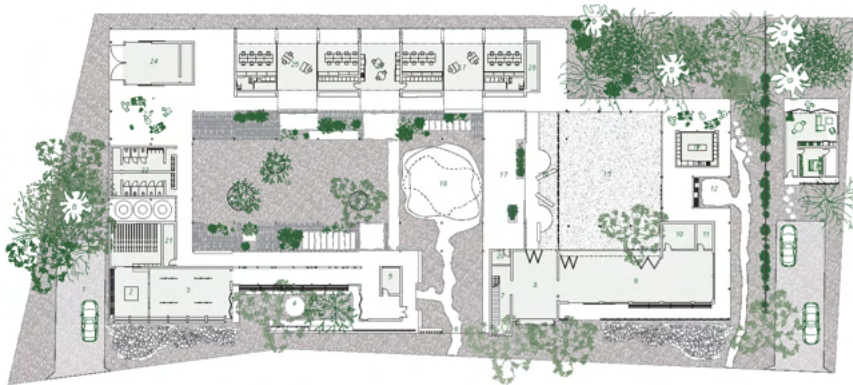
ARCH3100

GUNUNA ART CENTRE

The art center on Mornington Island uses courtyards inspired by First Nations "inner" and "outer" country to foster intergenerational learning. Inner courtyards offer intimate spaces where Elders pass down stories, while outer courtyards embrace open-air learning, connecting to Mornington Island's environment. These areas support gatherings, art events, and performances, creating a flow between personal reflection and community heritage, rooted in culture and place.



PERSPECTIVE SECTION



GROUND FLOOR PLAN

- LEGEND**
1. SERVICE DRIVEWAY
 2. SALES AREA
 3. CLIMATE CONTROLLED GALLERY
 4. GALLERY GARDEN
 5. OFFICE
 6. ENTRY
 7. VIEWING TOWER
 8. LEARNING CENTRE
 9. CULTURAL CENTRE
 10. STORAGE
 11. PRIVATE VIEWING
 12. OUTDOOR BBQ AREA
 13. PRIVATE RESIDENCE
 14. COMMUNITY KITCHEN
 15. COMMUNITY GARDEN
 16. LEARNING GARDEN
 17. CONTEMPORARY DANCE SPACE
 18. AMPHITHEATER
 19. COURTYARD
 20. STORAGE
 21. PLANT ROOM
 22. TOILET BLOCK
 23. BREAKOUT SPACE
 24. WORKSHOP
 25. MEKS STUDIO
 26. BREAKOUT KITCHEN
 27. WOMENS STUDIO
 28. PLANT ROOM



NORTH ELEVATION SALES GALLERY GALLERY GARDEN MAIN ENTRY TOWER LEARNING CENTRE CULTURAL CENTRE COMMUNITY ENTRANCE MANAGERS HOUSE

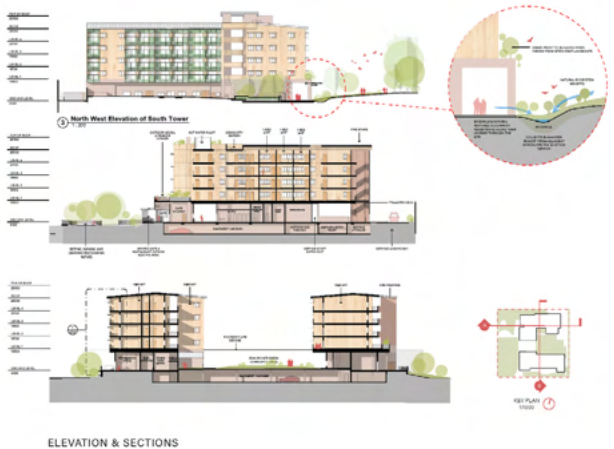


FLY THROUGH



WILLIAM THOMAS

**Architecture
UNDERGRADUATE**



ARCH7043

AVALON AFFORDABLE APARTMENTS

Located between Sir Fred Schonell Drive and Macquarie Street in St Lucia, Brisbane, this project is intended to reflect the ideals of the client, Brisbane Housing Company's, aspirations towards providing quality affordable housing for the vulnerable members of Brisbane's population.

The project consists of 1 level of Basement Carpark, Ground Level with retail and through-site connections, and 4 levels of 92 units ranging from studio to 4 bedroom units.

There is also an emphasis on Design Response to Country, where Country refers to the First Nation term for the natural systems on site and their relation to the people on it. This project considers the natural flow of water on site, soil biota systems, wind flow, on site. The project also aims to Truth Tell by maintaining several pre-existing man-made alterations on site that can be encouraged to become integrated and cherished parts of the overall project design and its strategies.

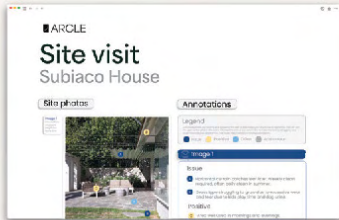
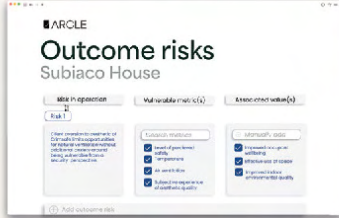
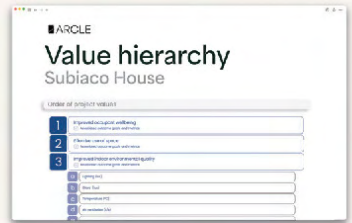
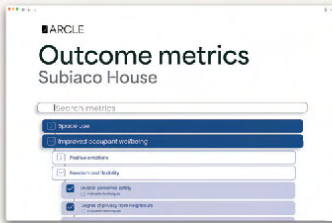
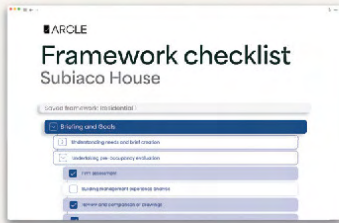


SITE SECTION - First Nation Designing On Country strategies



JEAN THOMSON

**Architecture
MASTER**



DSGN3200

ARCLE: IMPROVING POST-OCCUPANCY EVALUATIONS

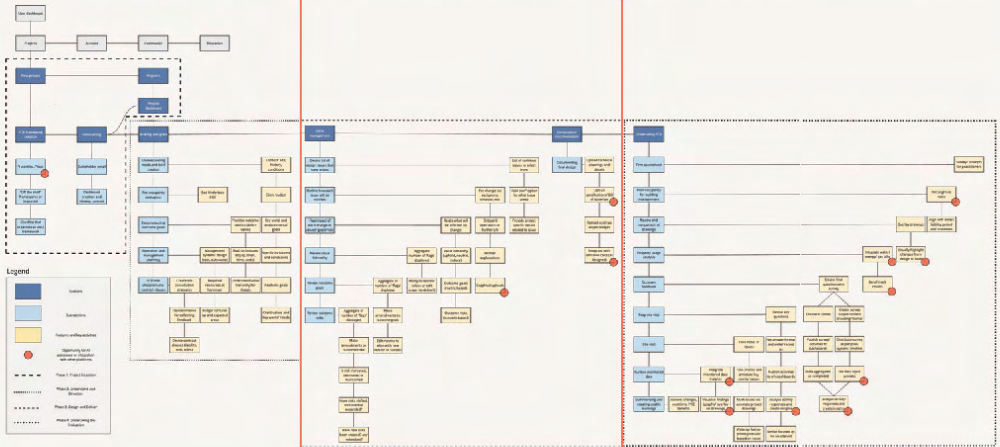
In our rapidly urbanising world, 40% of greenhouse gas emissions are created from the built environment (WBCSD, 2024). To make sure future buildings are more sustainable, we must have evidence of how effective current design choices are in-use, apply these learnings in future projects and create a circular feedback loop.

To gather such feedback, architecture firms can undertake post-occupancy evaluations

(POEs), which studies how a building is serving its occupants and performing environmentally. However, for most firms and on most projects, a POE is not viable because of time, cost, skill-set, or stakeholder relationship-based barriers.

To help improve the uptake of POEs within the industry, my final design proposal is a knowledge management software called ARCLE that enables and supports practices in implementing evaluations from the inception of a project. On the platform, features are available to choose from on a project-to-project basis and mirror the stages of existing procurement practices. ARCLE will enable evaluations to be integrated into architects' paid scope of work and create evidence of the value created from projects, giving them strategic leverage.

As a design anthropology student interested in entrepreneurship, I am developing ARCLE beyond this course. Please reach out via my contacts with your experiences and barriers regarding POE in practice, or any questions.



Images and diagrams:

Top (5): Mockup pages of the software and UI
Middle (1): Key sections of the software site-map, separated by orange lines (full site-map located on p 52 of report)

Bottom (2): QR codes for report and mock website



Final report, including process work.



Mock ARCLE website (best viewed on a laptop).



GEORGIA TIFFIN

Design
UNDERGRADUATE



ARCH3100

MIRNDIYAN GUNUNA ART CENTRE

The new Mirndiyan Gununa Art Centre is conceptualized based on respecting of country and preserving existing context while adhering to the cultural practices of the Lardil people. The building slots between the existing tree line of Lardil street's boundary lines and the eastern river. The orientation of building is based on the climate's wind paths which dissects the main building into two sides to honour the cultural norm of men and women working separately. The separation creates these in between spaces to allow for intergenerational learning, social connection as a community and encourage interactions on country.

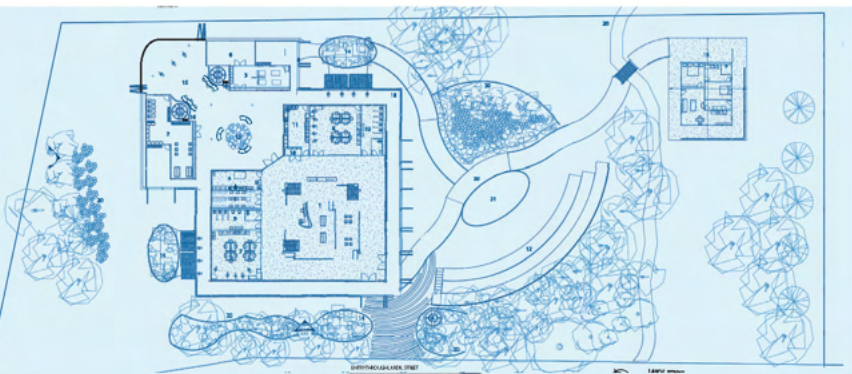
In the art's centre mornington island reflects on the Gununa's First Nations people's concept of connection between country and the sky, the separation of the peoples cultural norms and the need for safety and privacy. This connection is established through maintaining the visually between the indoor and outdoor as we circulate through the art centre, creating moments where that connection is always present.

These concepts are achieved through the use of louvers attached near to the ground, in order to maintain for artists and children to have visibility of the land while sitting down, without compromising privacy. Furthermore, it encourages cross ventilation across the building to cool down the tropical climate. The connection towards the sky is maintained through operable clerestory window amongst each studio and in the main gallery, as well as the skylight to where incoming weather are observed.



LEGEND

1. Main Gallery
2. Indigenous Knowledge Centre
3. Cultural Learning Space
4. Workshop
5. Storage
6. Artifacts and Safe Keeps Place
7. Men's Studio
8. Women's Studio
9. Men's WC
10. Women's WC
11. Kitchen Area
12. Amphitheatre
13. Roof Opening/Pond
14. Conversation Rocks
15. Outdoor Seating & Painting Area
16. Water Tank
17. Pump
18. PV Battery and Inverter
19. Admin Residence
20. Native Plant Garden
21. Traditional Dancing Ground
22. Contemporary Dancing Ground



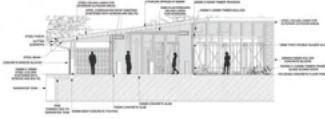
HUY TRUONG

Architecture
UNDERGRADUATE

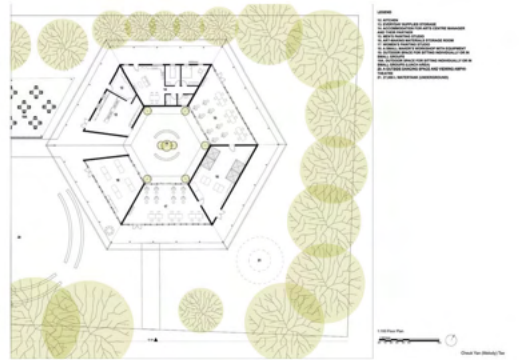
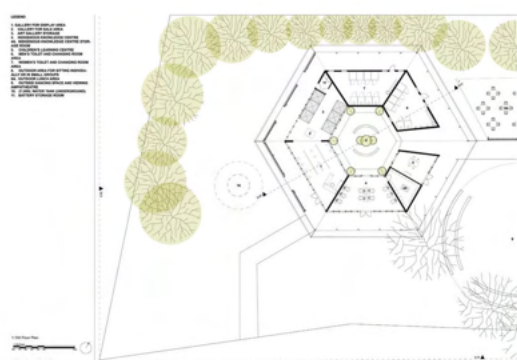
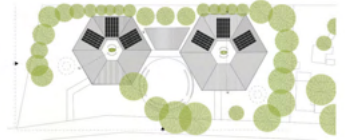
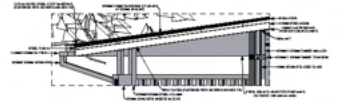


ARCH3100
**MIRNIDYAN GUNUNA
 ART CENTRE**

My name is Melody Tse and I am an undergraduate architecture student. This project was based on designing a new proposal for an Indigenous Aboriginal art centre located on Mornington Island for the people of Gununa. Through the design process, I have learned much about aboriginal culture, shared knowledge and the importance of their land.



The hexagonal shape in my design places emphasis on movement and community as it encourages more interaction between spaces while reducing traveling distances between each space. My proposed design focuses on fostering a sense of community while focusing on the concept of public and private in its design and ensuring that the design allows connection to nature as that is an important part of Aboriginal culture.



The Importance of Stakeholder Engagement to the Planning Process: The Case of the Heathrow Airport Expansion



(Source: London Places, n.d.)
Course: PLAN3005
Student name: Monique van Ingen
Student no.: 4753158
Word count: 213

Climate Risk Assessment for the Liverpool River Banana Property



(Source: Reacommercial, 2020)
Course: ENVM3115
Student name: Uniqqa van Ingen
Student number: 47534158
Word Count: 200

Dimension of performance	Vitality	Fit	Access	Control	Sense	Total
Subtotal	2/10	7/10	7/10	1/10	3/10	20/50

Dimension of performance	Comfort	Relaxation	Passive engagement	Active engagement	Discovery	Total
Subtotal	4/10	8/10	5/10	2/10	2/10	21/50

Dimension of performance	Outlines that engage the eye	Physical Context	Definition / Completeness / Clarity	Phases to Risk	Maintenance	Total
Subtotal	7/10	8/10	4/10	5/10	6/10	30/50

71/150

PLAN3005 Community Participation in Planning Essay

ENVM3115 Climate Risk Assessment

PLAN2003 Urban Design Portfolio



PLAN3200 International Field Course: Understanding Development Complexities

THEORY TO PRACTICE

During my studies in regional and town planning, I have developed a strong foundation of knowledge and skills to best support communities within our built and natural environments. This foundation spans key areas including planning theory, geographical information systems (GIS), community engagement, environmental management, economics, demography, and urban design.

Earlier in the year, I had the opportunity to apply my learning in a real-world context through the elective course PLAN3200. With funding from the New Colombo Plan, this course enabled students to travel to Yogyakarta, Indonesia where we partnered with Universitas Gadjah Mada. By spending our days in community engagement, analysis, and research, my group sought to contribute to the understanding of the city's informal riverbank settlements, and the development challenges people were experiencing there. We concluded the trip with a presentation of our findings about how and why existing infrastructure was failing to meet the basic needs of our subject community. These insights underscored the critical need for substantive community engagement to improve the climate-resilience and supporting infrastructure of Yogyakarta's vulnerable riverside communities.

Altogether, my undergraduate planning degree has strengthened my drive for creating urban spaces which people feel more positively connected to, while prioritising sustainability. As a soon-to-be graduate, I am excited to apply what I have learnt so far and make a meaningful contribution as a professional planner.



PLAN3200 Group Presentation

(alongside Noah Wilmott, Luka Echouse, Guochai Li, Fengyun Wu, Febrian Raffi, Iqbal Amien, and Shakina Rhosandy)



MONIQUE VAN INGEN

Planning UNDERGRADUATE



ARCH7015, ARCH7003, ARCH7004



GENERATIVE, ADAP- TIVE, GENTLE DENSE

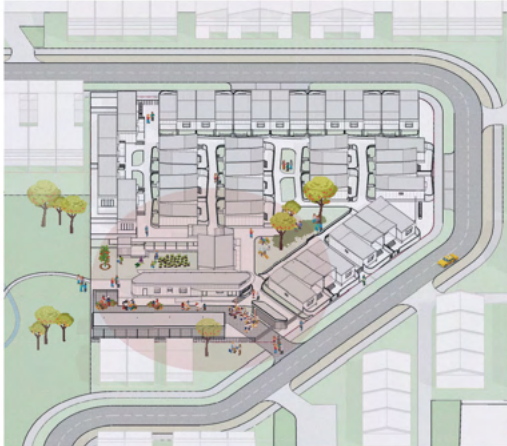
I have rediscovered my passion for Architecture through studying in Australia after years of tireless practice. This summary captures my journey at UQ.



(Top) ARCH7015 focused on the design outcomes generated by its function, environment, and context.

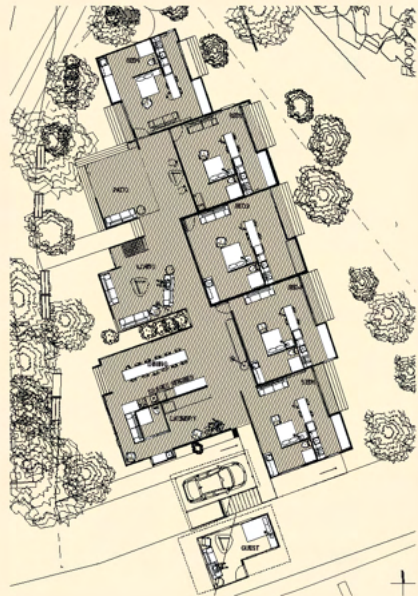
(Mid) ARCH7003 explored adaptive reuse, re-imagining the historic Harwood Railway Depot as an open museum depot with minimum destruction.

(Bottom) ARCH7004 addressed the current housing crisis, advocating a gentle density approach to support vulnerable populations.



WANG, FAN

Architecture
MASTER



ARCH2200
DARRA AVE
COMMONS

BRIEF: Design a co-living residential complex with five self contained units and communal spaces
DESIGN: Open plan, shared amenities, public/private zones
SITE: Darra Ave, Darra, Brisbane
FUNCTION: Residential, community
USER GROUP: Over 50's women

Learn't Outcomes:

Acknowledging vulnerable community groups + user pragmatics and behaviours + hybrid typologies + site organisation



Western elevation



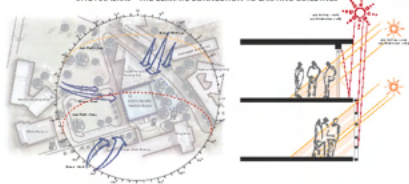
Eastern elevation



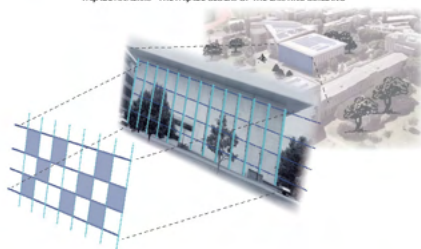
PATRICK WOLFE

Architecture
UNDERGRADUATE

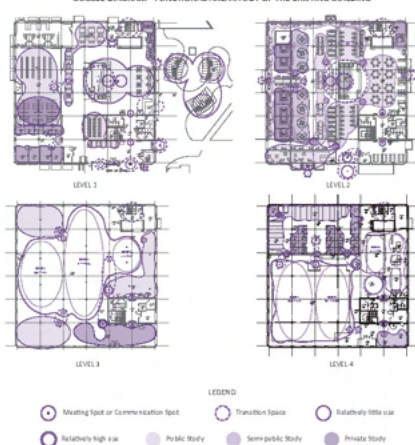
SITE ANALYSIS - THE CLIMATE CONNECTION TO EXISTING BUILDINGS



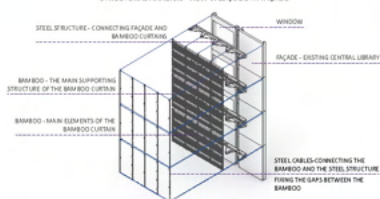
FAÇADE ANALYSIS - THE FAÇADE BLOCKS OF THE EXISTING BUILDING



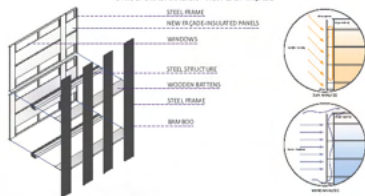
BUBBLE DIAGRAM - FUNCTIONAL AREA STUDY OF THE EXISTING BUILDING



STRUCTURAL ANALYSIS - NEW WEST/SOUTH FAÇADE



STRUCTURAL ANALYSIS - NEW EAST FAÇADE



ARCH3200

CENTRAL LIBRARY EXTENSION

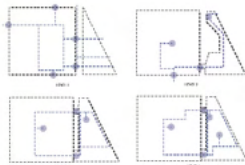
Climate Change Affects Design Considerations

The project faced the dual design challenges of space and materiality, responding to the demographic needs of the University of Queensland's St. Lucia campus over the next few decades.

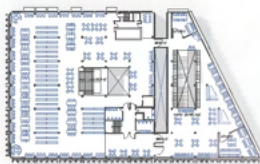
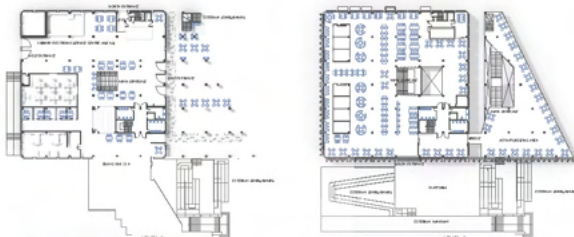
The principal contradiction of this project was to find a balance between 'building and not building'. Changing the existing building structure less while changing the functional spaces more.

The façade was changed in order to capture as much light as possible without being exposed to direct sunlight. The addition of an extra layer of façade to the original façade is to protect the heritage component of the University of Queensland. Bamboo, a native Queensland species, was chosen as the material of choice. I hope that both the material choice and the space design can be maintained as a Queensland-inspired design.

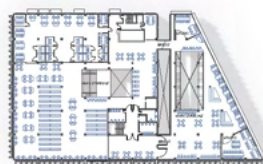
It is also a reflection on the future of design: the balance between space-nature and space-people.



CIRCULATION ANALYSIS



LEVEL 3



LEVEL 4

DESIGN - FLOOR PLAN



WEINONG WU

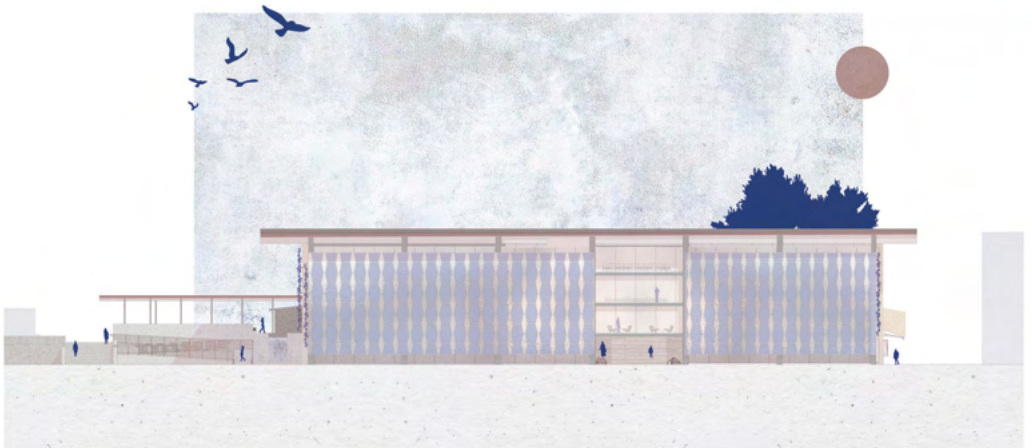
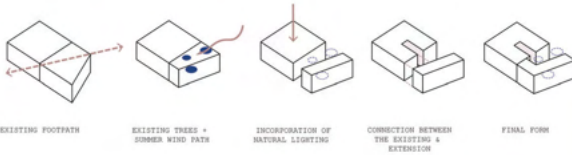
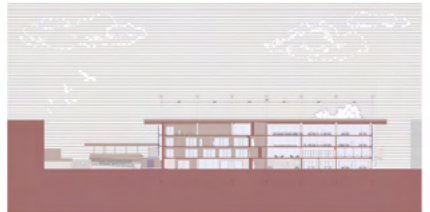
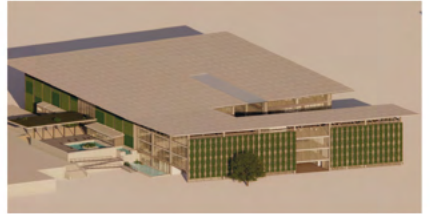
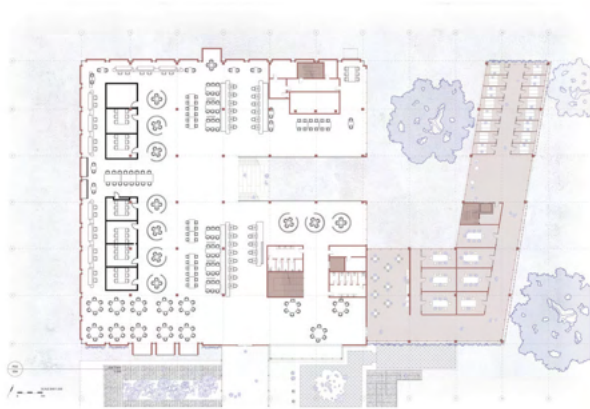
**Architecture
UNDERGRADUATE**

THE GREENHOUSE CENTRAL

The design and construction of The Greenhouse Central library extension were fundamentally guided by the concept of creating a space that fosters a harmonious connection between university students and the natural environment, allowing for meaningful interaction and coexistence. The vision extended beyond establishing the UQ Central Library as merely a learning facility; it aimed to redefine it as a multifaceted space for relaxation, social interaction, and environmental engagement.

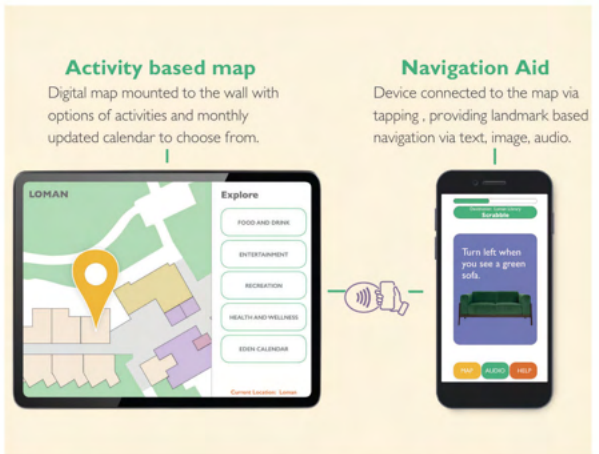
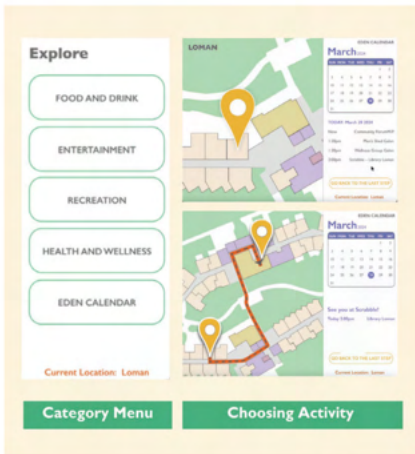
The project development commenced with a series of minimalistic diagrammatic studies aimed at generating and refining conceptual ideas. This initial phase facilitated the exploration of spatial relationships and design intent in a clear and straightforward manner. Subsequently, the process evolved to include detailed orthogonal drawings that articulated the project's architectural language and formal expression. These artistic repre-

sentations captured the essence of the design, emphasizing both functional and aesthetic elements. Finally, high-quality realistic renderings were produced to convey the envisioned outcome of the project, offering a tangible sense of materiality, lighting, and spatial experience. This progressive approach ensured a comprehensive translation of conceptual ideas into a fully realised architectural vision.



Rosie (Tianyue) Xie

Architecture
UNDERGRADUATE



PATHPAL

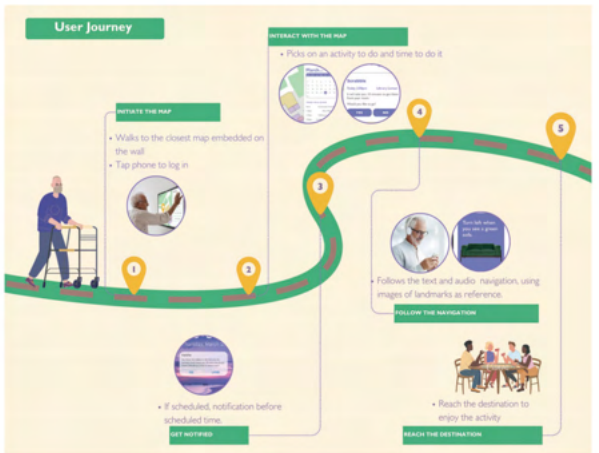
A way finding solution to promote independence

In my research—including observations, interviews, and co-design sessions—I found that cluttered, hard-to-read maps limit residents' independence. Many avoid seeking help to maintain autonomy, often resulting in frustration and isolation.



PathPal is an activity-based digital map and navigation aid for aged care facilities. With an activity-centered interface, residents can browse the Eden calendar and other events. Installed in accessible, high-traffic areas, PathPal connects via a simple tap, offering landmark-based navigation with text, images, and audio. Residents can use their own smartphone or a dedicated device, with optional holders for attachment to wheelchairs or walkers.

PathPal empowers residents to navigate confidently, enhancing their independence and sense of belonging, so they can explore their surroundings and truly feel at home in their community.



ZOE XU

Design
UNDERGRADUATE



DSGN3200

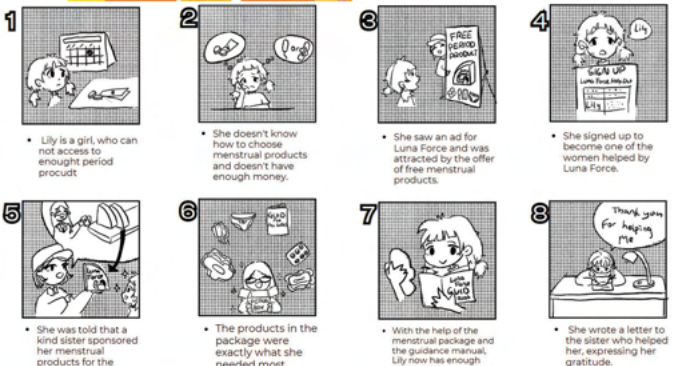
LUNA FORCE

"Empowering women and breaking barriers by tackling period poverty through accessible menstrual care and education."

Hi, my name is Chen. I am a 2024 graduating student from The University of Queensland. As a design student majoring in anthropology, I am able to explore innovative solutions to complex social issues while gaining a deeper understanding of the cultural and societal contexts that shape human experiences.

Period poverty is a global phenomenon that affects women who are menstruating and have little financial means. As a result, they often struggle to access waste disposal, laundry supplies, and sanitary products. It also covers issues with social stigmas, cultural taboos, and ignorance regarding menstruation, which may lead to embarrassment, and worry. The International Federation of Gynecology and Obstetrics (IFGO) estimates that 500 million women worldwide live in "period poverty."

Luna Force is a social innovation project dedicated to addressing period poverty. Through a "buy-one-give-one" model, for every box of menstrual care products sold, a identical box is donated to a girl in need. Luna Force offers affordable and comprehensive menstrual care items such as daytime pads, nighttime pads, and tampons, along with an educational booklet to spread awareness about menstrual health. To enhance emotional engagement, the project shares the stories of recipient girls, includes a journey map to show the donation process, and provides personalized donation certificates. The primary goal of Luna Force is to tackle the challenges women face due to the high cost of menstrual products and social stigmas, ensuring that we can maintain basic hygiene during their menstrual cycles. By reducing health risks and promoting social equity, Luna Force aims to eliminate the shame and prejudice associated with menstruation, fostering greater gender equality.



Chen Zhong

Design

UNDERGRADUATE

Acknowledgements

Exhibition committee

Charli Cameron, Sophia Dow, Tanya Mohan, James Steadman, Lauren Stegman, Patrick Wolfe

Exhibition graphics

Zoe Xu

Exhibition volunteers

This event would not have been possible without the hard work and dedication of our volunteers. We are incredibly grateful for their contributions, which helped make this event a reality.

UQ staff

Sonya Brown, Lucy Burke, Sam Butler, Olivia Dwyer, Katie Gollschewski, Chelsea Muir, Fred Fialho Teixeira, Stephanie Wyeth



Thank you to our outstanding sponsors for their contribution.

Advocates

Hassell

rothelowman

nettleontribe
architecture

Friends

77ARCHITECTURE

MARC & CO

**MAKE
SHIFT**

